



18 Manor Road South, Esher
£4,300 pcm

18 Manor Road South

Esher, Esher

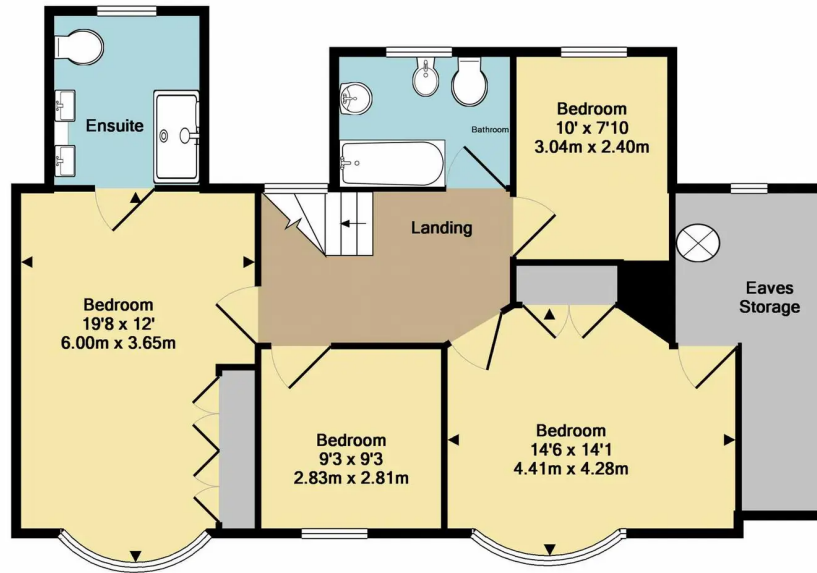
A bright, double fronted detached and beautifully presented four bedroom family home found on a sought after tree lined road within three minutes walking distance of shops and station and in the catchment area of the popular Hinchley Woods Schools.

Council Tax band: G

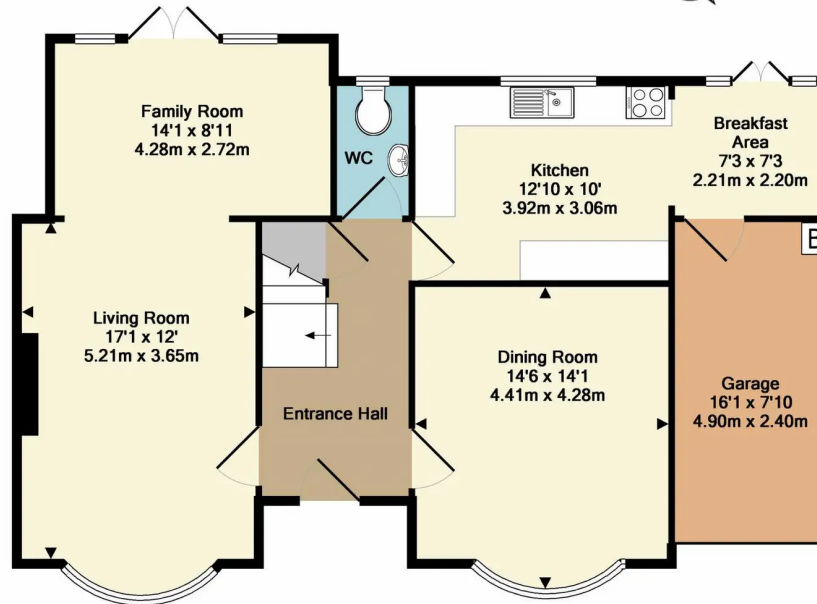
- Detached house
- Available from 7th October
- Unfurnished
- Four bedrooms
- Two bathrooms
- Off street parking
- Garage







1st floor
 Approx. Floor
 Area 869 Sq.Ft.
 (80.7 Sq.M.)



Ground floor
 Approx. Floor
 Area 962 Sq.Ft.
 (89.4 Sq.M.)

Total Approx. Floor Area 1831 Sq.Ft. (170.1 Sq.M.)
 Measurements are approximate. Not to scale. Illustrative purposes only
 Made with Metropix ©2014