

Hazelmere Avenue, Buckshaw Village

PR7 7FD

£130,000



Fabulous one bedroom link detached property in a quiet and sought after Buckshaw Village location within easy reach of primary transport routes, town centre amenities and centres of employment. This would make a perfect first time buy, pied a terre or investment property. Double gates open to secure parking and the main entrance. Step inside where you will find the bedroom with fitted wardrobes and the bathroom comprising bath with electric shower over, wc, wash hand basin and ladder heated towel rail. Take the stairs to the first floor and delightful open plan living with the lounge having Juliette balcony overlooking trees to the front, and kitchen comprising a range of wall and base units, breakfast bar, gas hob, electric oven and grill, refrigerator and freezer and space, power and plumbing for additional appliances. Step outside onto the balcony which has a distinctly Mediterranean feel and is the perfect place to relax, entertain and be happy. In addition, this property benefits from a lovely private garden which is laid to lawn with terrace and bordered by mature and herbaceous planting.



Fabulous one bedroom link detached property in a quiet and sought after Buckshaw Village location within easy reach of primary transport routes, town centre amenities and centres of employment. This would make a perfect first time buy, pied a terre or investment property.

Council Tax band: A

Tenure: Leasehold

- Link detached property
- Garden and balcony
- Secure parking
- Excellent first time buy
- Popular residential location
- Close to amenities



HOME TRUTHS
SALES AND LETTING AGENT

Eccleston Branch

265 The Green, Eccleston, PR7 5TF
01257 451673

Coppull Branch

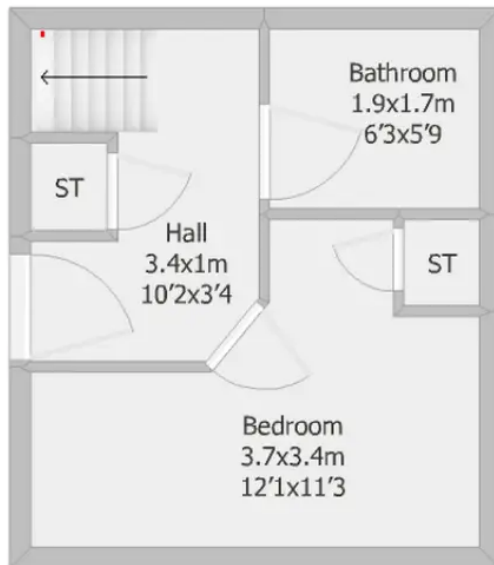
244 Spendmore Lane, Coppull, PR7 5DE
01257 794588

www.hometruthslancs.co.uk
office@hometruthslancs.co.uk

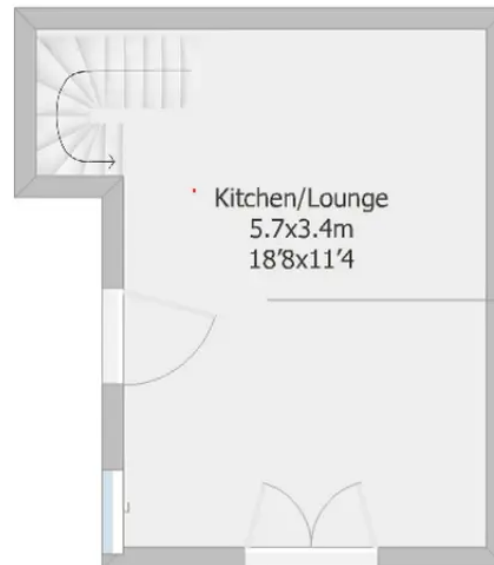


4 Hazelmere Ave

Ground Floor
18.7 sq m (approx)
201.3 sq ft (approx)



First Floor
19.9sq m (approx)
214.6 sq ft (approx)



Drawing is for illustrative purposes only and is not to scale. No responsibility is taken for any errors.
Drawn using RoomSketch