

THE KENMORE

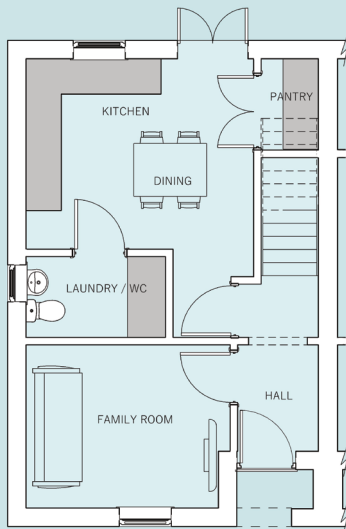


3 Bedroom Terrace Town House

The Kenmore is a large 3 bedroom town house that offers versatile living space ideal for growing families or professional couples in need of a bigger home.

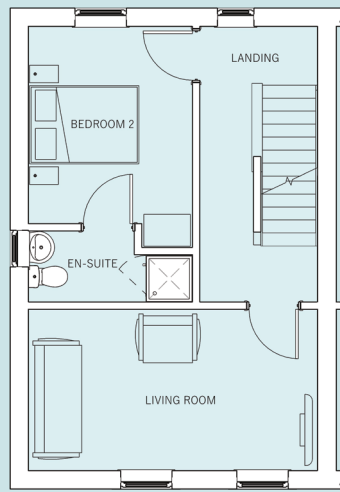
You enter the Kenmore via a brick portico which opens into the hallway. To one side of you is the family room or study, then an archway takes you through to the well proportioned dining kitchen with handy walk in pantry, french doors to the rear garden and access to the laundry and guest cloakroom.

From the hallway, stairs lead up to the generous first floor living room, an ideal space to relax. A comfortable en-suite guest bedroom completes this floor. On the second floor is the master bedroom, family bathroom with separate shower and a further bedroom perfect for use as a nursery.



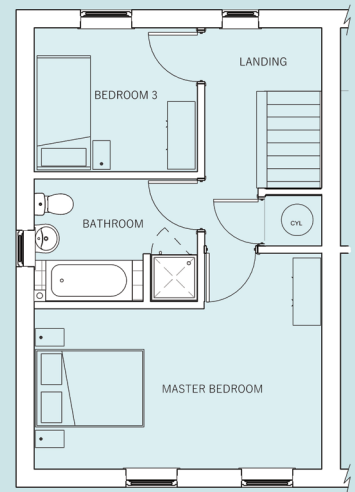
Ground floor

Kitchen & Dining	3900 x 4765mm max 12'9" x 15'7"
Family Room	3500 x 2800mm 11'5" x 9'2"
Pantry	1000 x 1580mm 3'3" x 5'2"
Laundry & Guest Cloakroom	2400 x 1400mm 7'10" x 4'7"



First floor

Living Room	5000 x 2800mm 16'4" x 9'2"
Bedroom 2	2850 x 3825mm max 9'4" x 12'6"
En-suite	2850 x 1248mm max 9'4" x 4'1"



Second floor

Master Bedroom	5000 x 3765mm max 16'4" x 12'4"
Bedroom 3	2850 x 2515mm 9'4" x 8'3"
Bathroom	2850 x 2150mm 9'4" x 7'0"



www.broadgate-homes.com



This image is from an imaginary viewpoint within an open space area. Its purpose is to give a feel for the development, not an accurate description of an individual property. It shows a typical Broadgate home of this type, but external materials and landscaping may vary throughout the development and from site to site. Certain windows are subject to plot position on site. Properties may also be built handed (mirror image).

The floor plans depict a typical layout of this house type. All dimensions are + or - 50mm and floor plans are not shown to scale. For exact plot specification, details of external and internal finishes, dimensions and floor plan differences always consult your Sales Negotiator. SJC23/1220/12