



Old Laira Road, Plymouth, PL3 6AD

Guide Price £125,000



Old Laira Road

Plymouth

A perfect opportunity for an investment project to return this beautiful two bedroom terraced house back into a home wether it be for yourself or a quick turnover. The property is still bursting with Character maintaining it's four fireplaces and high coved ceilings.

Tenure: Freehold

- Investment Project
- Large Main Bedroom
- Central Location
- Original Character Features
- Generous Living Room
- Ample Sized Rear Garden



Old Laira Road

Plymouth

A perfect opportunity for an investment project to return this beautiful bedroom terraced house back into a home, whether it be for yourself or a quick turnover. The property is still bursting with character maintaining its four fireplaces and high coved ceilings.

The property hosts two large double bedrooms, a great living space with separate dining room, an ample sized kitchen with a three piece bathroom suite and a generous garden.

Old Laira Road is situated just on the outskirts of the city centre but gives easy access into the city and out with a quick connection the embankment linking to the A38 and beyond. The property is just walking distance from a few local shops and a short drive to plenty more amenities. Laira also has a great surrounding of schools and a hospital giving the feeling that you are never too far from anything.

Tenure: Freehold

- Investment Project
- Large Main Bedroom
- Central Location
- Original Character Features
- Generous Living Room
- Ample Sized Rear Garden



Living Room

The living room is located to the rear of the property on the ground floor. Boasting an open feature fireplace and large sash windows overlooking the rear garden.

Dining Room

The Dining Room is positioned at the front of the house with its high ceilings and another fireplace to add to this properties character.

Kitchen

You head downstairs from the ground floor to find yourself in the kitchen at garden level. The Kitchen currently has an oven with gas hobs over and ample cupboards fitted. There is space for a small breakfast table and access into a storage/utility room, the bathroom and the rear garden.

Bathroom

There is a three piece suite bathroom located on the garden level just off of the kitchen area. The bathroom consists of a bath with shower overhead, wash hand basin and low level W/C.

Main Bedroom

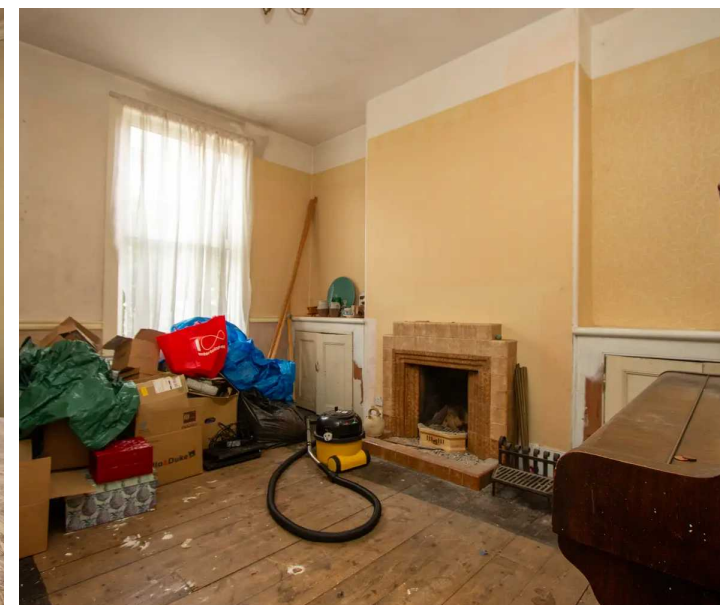
The Main bedroom is a grand size and oozes with natural light because of the two large sash windows which provide far reaching views. This bedroom also hosts a third fireplace which gives a real centre point of the room.

Second Bedroom

The Second Bedroom is another large room with space for any size bed and storage. The white and black fireplace helps this room keep its original character.

Garden

The property has a large south facing rear garden in need of some care but is generally level throughout.



Living Room

The living room is located to the rear of the property on the ground floor. Boasting an open feature fireplace and large sash windows overlooking the rear garden.

Dining Room

The Dining Room is positioned at the front of the house with its high ceilings and another fireplace to add to this properties character.

Kitchen

You head downstairs from the ground floor to find yourself in the kitchen at garden level. The Kitchen currently has an oven with gas hobs over and ample cupboards fitted. There is space for a small breakfast table and access into a storage/utility room, the bathroom and the rear garden.

Bathroom

There is a three piece suite bathroom located on the garden level just off of the kitchen area. The bathroom consists of a bath with shower overhead, wash hand basin and low level W/C.

Main Bedroom

The Main bedroom is a grand size and oozes with natural light because of the two large sash windows which provide far reaching views. This bedroom also hosts a third fireplace which gives a real centre point of the room.

Second Bedroom

The Second Bedroom is another large room with space for any size bed and storage. The white and black fireplace helps this room keep its original character.

Garden

The property has a large south facing rear garden in need of some care but is generally level throughout.





Atwell Martin

Atwell Martin, 65 Southside Street - PL1 2LA

01752 202121

plymouthsales@atwell-martin.co.uk

plymouth.atwellmartin.co.uk/

Atwell Martin Plymouth endeavour to ensure the accuracy of property details produced and displayed. Please note that we have not tested any apparatus, equipment, fixtures, fittings or services and so cannot verify that they are connected, in working order or fit for purpose. It is imperative that the buyer of any property makes such checks, prior to purchase so as to satisfy themselves of the properties suitability for their purchase. .