



2 Bedroom Apartment £155,000

5 Ivy Court, 25 Pasteur Drive, Swindon, SN1 4GJ

mcFarlane  
property.com



## 2 Bedroom Apartment

### Swindon, Old Town

- Fantastic Location
- Open Plan Living Area
- Two Double Bedrooms
- En-suite to Master
- Juliette Balcony
- Re-fitted Kitchen and En-Suite
- Allocated Parking

Beautifully presented and updated two bedroom apartment. Accommodation briefly comprises modern fitted kitchen with ample storage space, sitting/dining room with Juliette balcony, two double bedrooms with the master bedroom benefitting from built in wardrobes and a refitted three piece shower room. Further benefits include double glazing throughout, close to local shops and amenities, secure entry phone system, hard floors throughout, store room and parking for one car.

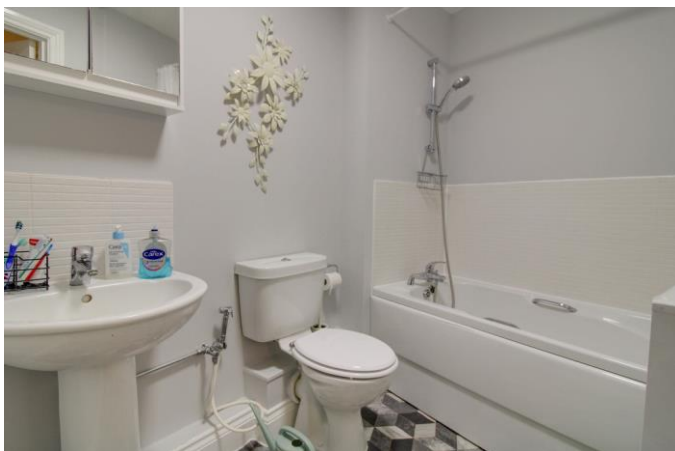
\*\*\*Lease details\*\*\*

Lease remaining: 108 years.

Annual Service Charge: £1,920.00

Annual Ground Rent: £198.00



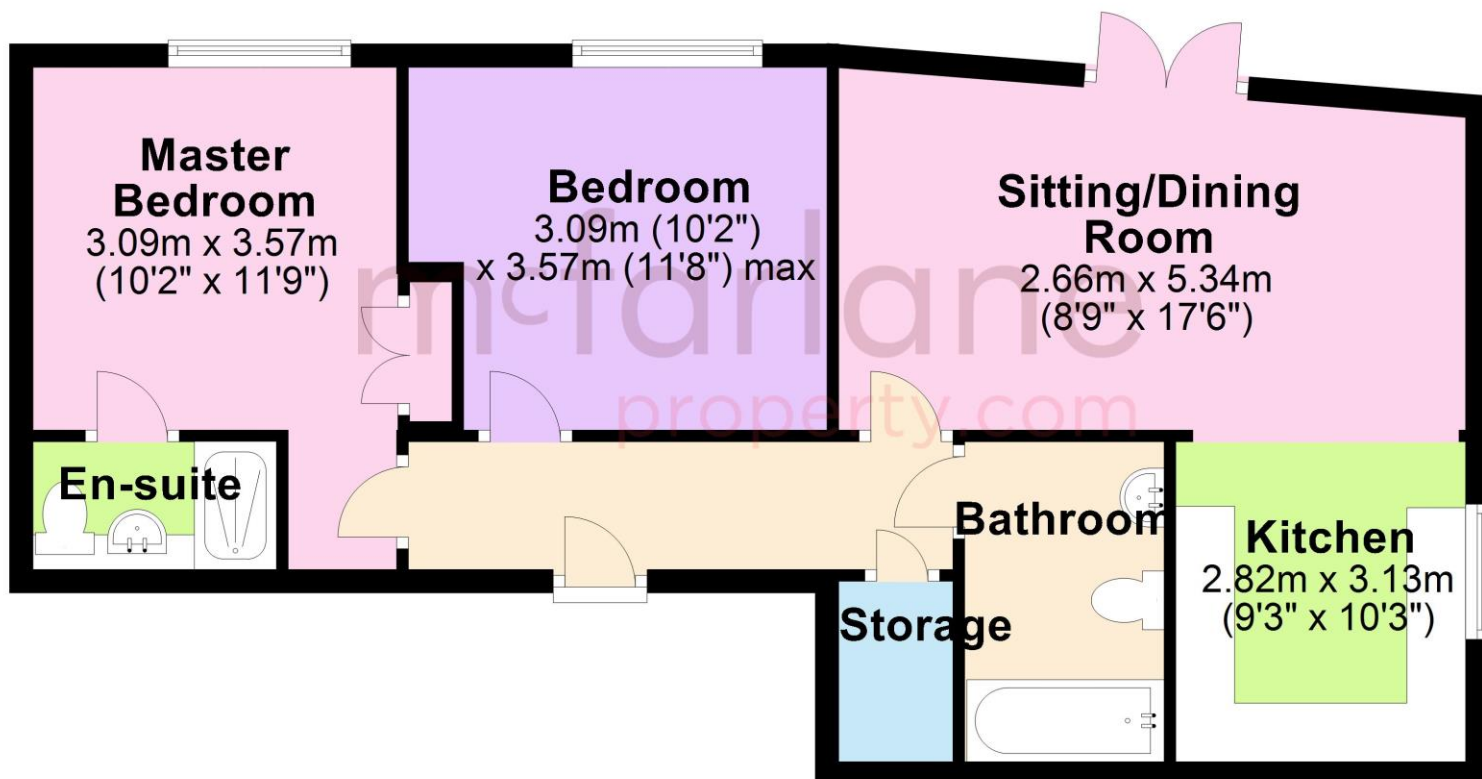






# Ground Floor

Approx. 59.8 sq. metres (643.8 sq. feet)



Total area: approx. 59.8 sq. metres (643.8 sq. feet)

**We**   
**where you**  
**LIVE**

Our team are friendly, experienced and are all local. They know it better than they do their own living rooms and can help you find what you're looking for because **we love where we live.**

We would be delighted to show you around this property.

**Because every home needs a personal touch.**

**If you would like to view this property then please get in touch.**

☎ 01793 296880

✉ [oldtown@mcfarlaneproperty.com](mailto:oldtown@mcfarlaneproperty.com)

[mcfarlaneproperty.com](http://mcfarlaneproperty.com)

**mcfarlane**  
property.com

**Cricklade.**  
102 High Street  
Cricklade SN6 6AA  
☎ 01793 751044

**Marlborough.**  
106 High Street  
Marlborough SN8 1LT  
☎ 01672 514380

**Old Town.**  
28-30 Wood Street  
Swindon SN1 4AB  
☎ 01793 296880

**Swindon.**  
The Village Centre,  
Redhouse SN25 2FW  
☎ 01793 296600

Agents Note: Whilst every care has been taken to prepare these sales particulars, they are for guidance purposes only. All measurements are approximate are for general guidance purposes only and whilst every care has been taken to ensure their accuracy, they should not be relied upon and potential buyers are advised to recheck the measurements