



7 Dudley Avenue, Blackpool
Blackpool

Offers Over **£120,000**

7 Dudley Avenue

Blackpool, Blackpool

Looking for a hassle-free move? Well, look no further! This 3 bedroom semi-detached house is ready and waiting for its lucky new owners. With no chain attached, you could be settling in before you know it.

The property consists of Entrance hall, Lounge, Dining room, Extended Kitchen, 3 Bedrooms and 4 piece family bathroom.

To the front includes a south facing garden with off road parking. To the rear is an enclosed north facing garden mainly laid to lawn.

The property is being sold chain free.

Council Tax band: B

Tenure: Freehold

- No chain
- 2 reception rooms





Entrance Hall

Hallway leading to lounge, dining room and first floor landing.

Lounge

11' 11" x 10' 11" (3.62m x 3.33m)

Lounge to the front with UPVC bay window, feature electric fire with wooden surround.

Dining room

13' 0" x 9' 10" (3.95m x 3.00m)

Dining room to the rear with UPVC double glazed window with access to kitchen.

Kitchen

20' 8" x 4' 7" (6.31m x 1.39m)

Extended Kitchen to the rear with electric hob and oven. Base level units and rounded worktop



**Landing**

6' 2" x 5' 10" (1.89m x 1.78m)

Split landing leading to bedroom and family bathroom.

Bedroom 1

14' 7" x 10' 11" (4.44m x 3.34m)

Master bedroom to the front with UPVC bay window.

Bedroom 2

9' 10" x 7' 11" (3.00m x 2.42m)

Second bedroom to the rear with UPVC double glazed window.

Bedroom 3

10' 7" x 6' 2" (3.23m x 1.87m)

Bedroom 3 to the front with UPVC double glazed window.

Bathroom

6' 9" x 6' 11" (2.07m x 2.12m)

Family bathroom with 4 piece suite







FRONT GARDEN

South facing front garden with access to the side from gate. Metal gated driveway.

REAR GARDEN

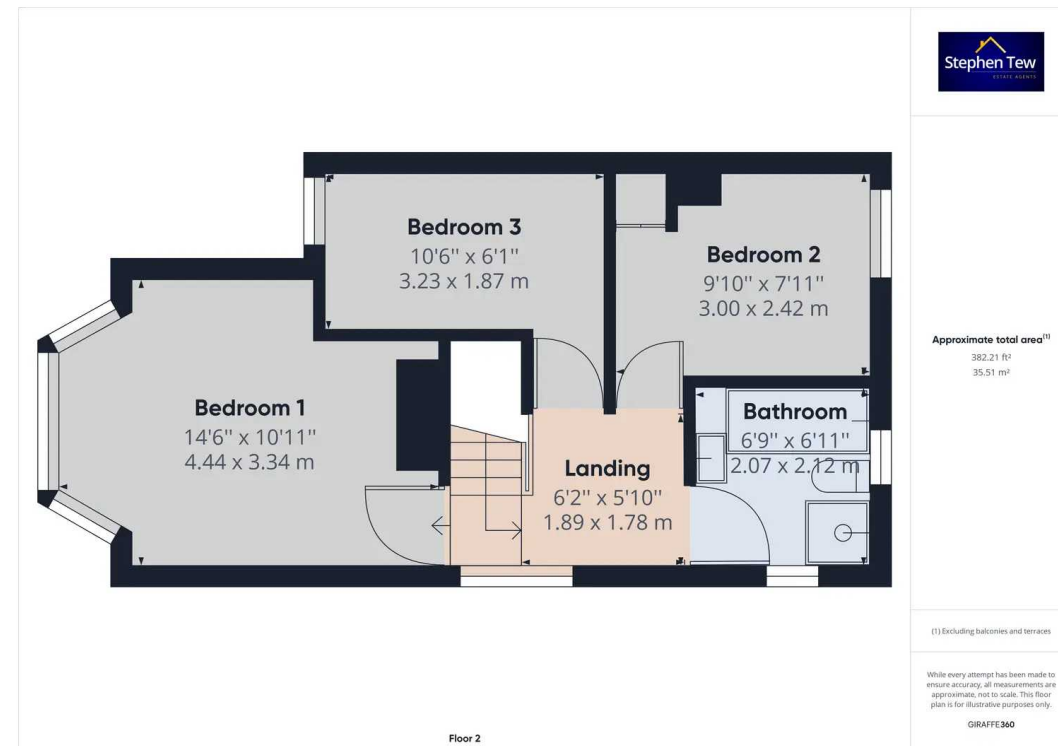
North facing rear garden with patio and lawned area with access to the front from one side.

OFF ROAD

1 Parking Space

Gated off road parking to the front.







Stephen Tew Estate Agents

Stephen Tew Estate Agents, 132 Highfield Road - FY4 2HH

01253 401111

info@stephentew.co.uk

www.stephentew.co.uk

