



Parsonage Way, Queen Anne's Quay, Plymouth, PL4 0LY

£195,000 LEASEHOLD





## Parsonage Way

Queen Anne's Quay, Plymouth, PL4 0LY

This spacious first floor apartment comprises of a large open plan, kitchen, living, diner. Two double bedrooms and a three piece bathroom suite. Located on the waters edge in the securely gated development of Queen Anne's Quay.

Council Tax band: B

Tenure: Leasehold

- Securely Gated Estate
- Low Service Charge
- Large Communal Gardens
- Allocated Parking Space
- Two Large Double Bedrooms
- Spacious Open Plan Kitchen, Living, Diner
- Great Investment Potential



# Parsonage Way

Queen Anne's Quay, Plymouth, PL4 0LY

You enter the property on the first floor into the hallway providing access to all rooms. The hallway also hosts two large storage cupboards. To the rear of the apartment you are welcomed by the elongated open plan living space with the kitchen/diner on one side and the living space on the other. There are large uPVC double glazed windows either end of the room which allows the natural light to burst through the apartment.

The main bedroom is of a great size fit for any size bed plus ample space for wardrobes. The second bedroom is of another good double size and can also be used as a large office space.

The bathroom hosts a three piece suite comprising of a full size bath with shower overhead, wash hand basin and a low level W/C. The bathroom is finished Semi tiled.



# Outside

The property has access to communal gardens which are maintained by the residents and there is also an allocated parking space to the front of the building.

## Tenure & Services

Lease length: 988 Years

Service Charge: £825.58 per annum

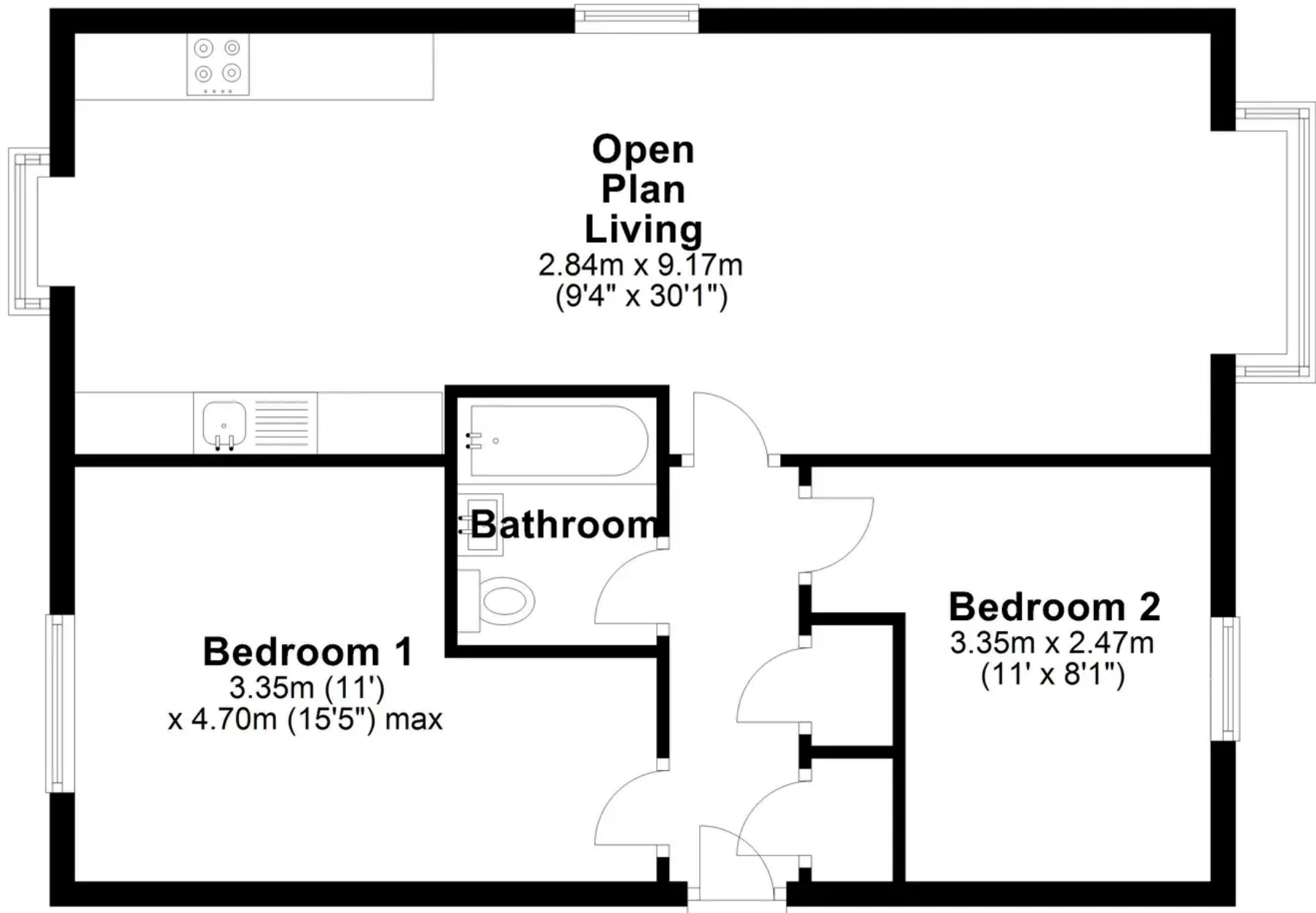
Ground Rent: £333.70 per annum

Council Tax band: B

Tenure: Leasehold



# First Floor





## Atwell Martin

Atwell Martin, 65 Southside Street – PL1 2LA

01752 202121

[plymouthsales@atwell-martin.co.uk](mailto:plymouthsales@atwell-martin.co.uk)

[plymouth.atwellmartin.co.uk/](http://plymouth.atwellmartin.co.uk/)

Atwell Martin Plymouth endeavour to ensure the accuracy of property details produced and displayed. Please note that we have not tested any apparatus, equipment, fixtures, fittings or services and so cannot verify that they are connected, in working order or fit for purpose. It is imperative that the buyer of any property makes such checks, prior to purchase so as to satisfy themselves of the properties suitability for their purchase. .