



Woodley Close, Abingdon

Guide Price £175,000

Abingdon

Simpsons

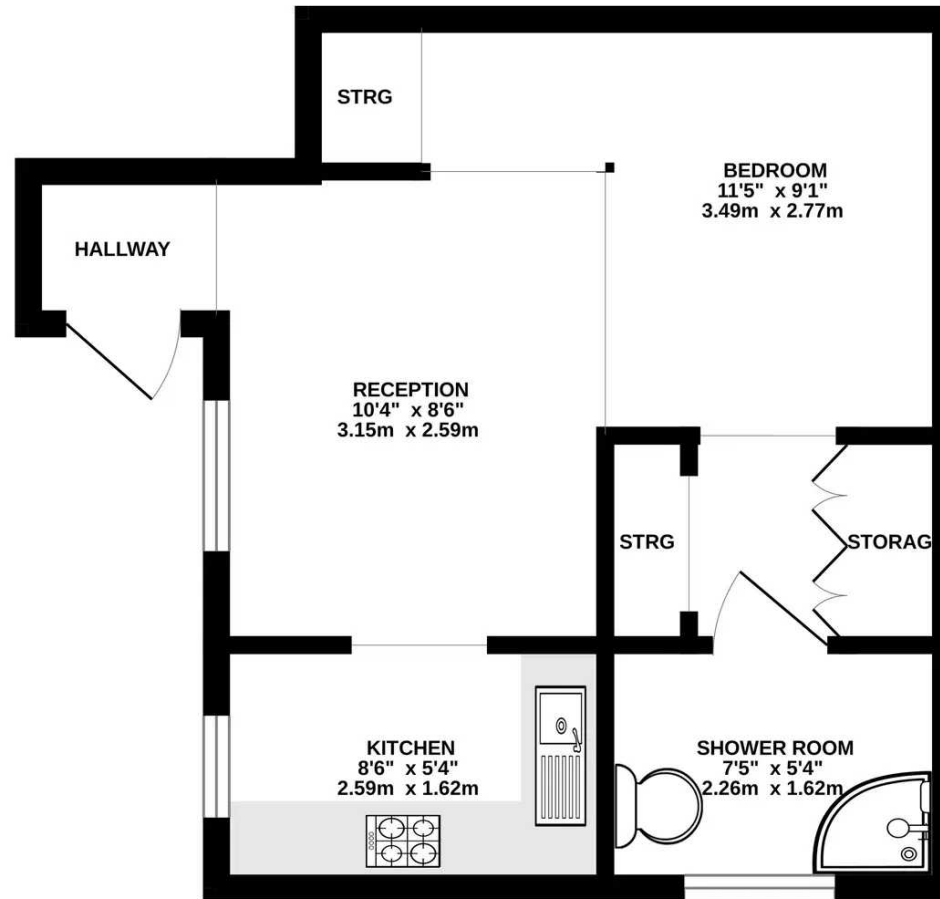
The Proactive Agent



SCAN THE
QR CODE
FOR DETAILS



GROUND FLOOR
309 sq.ft. (28.7 sq.m.) approx.



TOTAL FLOOR AREA : 309 sq.ft. (28.7 sq.m.) approx.

Whilst every attempt has been made to ensure the accuracy of the floorplan contained here, measurements of doors, windows, rooms and any other items are approximate and no responsibility is taken for any error, omission or mis-statement. This plan is for illustrative purposes only and should be used as such by any prospective purchaser. The services, systems and appliances shown have not been tested and no guarantee as to their operability or efficiency can be given.
Made with Metropix ©2023

Woodley Close

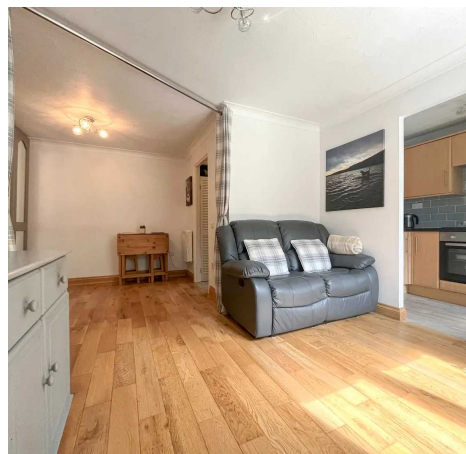
Abingdon, Abingdon

A stunning ground floor apartment in an exclusive North Abingdon location.

Council Tax band: B

Tenure: Leasehold

- A superb ground floor apartment, modernised throughout to a high specification.
- Building insurance £25 per month.
- Allocated parking space with additional visitor spaces.
- Well kept garden laid to lawn and patio.
- North Abingdon.
- 157 year leasehold term with no ground rent or service charge payments.



SCAN THE
QR CODE
TO BOOK
YOUR VIEWING



