



Willow Grange, 14 St Peters Close, Rickmansworth, WD3 8UY  
Guide price: £975,000 Freehold

sewell &  
gardner

# About the property

An extremely well presented 5 bedroom detached house tucked in the corner of this quiet residential cul-de-sac.

The property comprises of lounge, dining area, utility room, kitchen, breakfast room/family room and shower room. Upstairs there are 4 bedrooms (3 doubles), ensuite bathroom to bedroom one and family bathroom. On the second floor there is a further double bedroom/study and dressing room.

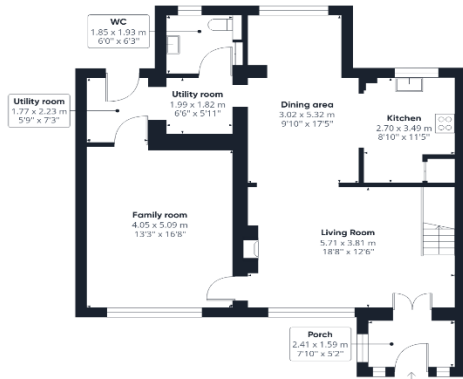
The property further benefits from an attractive two-tiered rear garden, parking for several cars, gas central heating and double glazing.



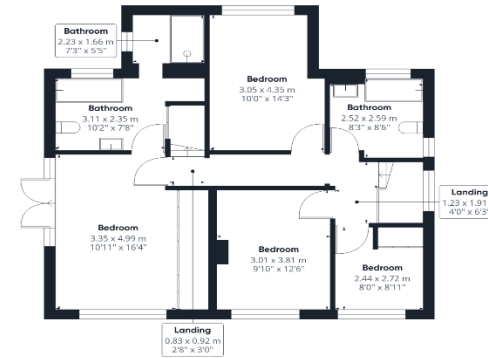
- Five bedrooms
- Flexible living accommodation

- Two tiered garden
- Two bathrooms

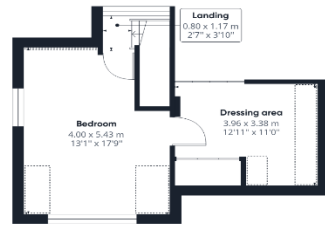
- Driveway parking
- Well presented throughout



Floor 0



Floor 1



Floor 2

**Approximate total area<sup>(1)</sup>**

195.89 m<sup>2</sup>  
2108.49 ft<sup>2</sup>

**Reduced headroom**

5.16 m<sup>2</sup>  
55.56 ft<sup>2</sup>

(1) Excluding balconies and terraces

⌈ Reduced headroom (below 1.5m/4.92ft)

While every attempt has been made to ensure accuracy, all measurements are approximate, not to scale. This floor plan is for illustrative purposes only.

GIRAFFE360

To view this property, contact us on-

T: 01923 776400 E: [sgsales@sewellgardner.com](mailto:sgsales@sewellgardner.com)

165-167 High Street, Rickmansworth, WD3 1AY



## Area Information

Rickmansworth has plenty of countryside nearby for walks and cycling but is also close enough to London to offer residents the chance of the hustle and bustle of the big city. One of Rickmansworth's most popular destinations is the 41 hectares of Local Nature Reserve the Aquadrome, with Lakes, woodland, children's play area and the popular Café in the Park. There are plenty of leisure facilities within the area including an array of golf courses, health clubs and swimming pools.

There are multitude of local shops in Rickmansworth including smaller boutiques and larger High Street chains such as Marks & Spencer, WHSmiths, Boots and a large Waitrose. Restaurants such as Zaza's and Masala bowl are available as well as gastro pub dining including the Feathers which will offer a more traditional menu. For further retail therapy, the Watford Intu shopping centre is 15 minutes by car.

**Local Authority:** Three Rivers Council

**Council Tax:** F

**Approximate floor area:** 2108sqft

**Tenure:** Freehold

**Nearest Station:** Rickmansworth Station, 1 mile

**Distance to Town Centre:** 0.9 miles to Rickmansworth

**Nearest Motorway:** 2.2 miles to M25



Score	Energy rating	Current	Potential
92+	A		
81-91	B		
69-80	C		73 C
55-68	D	57 D	
39-54	E		
21-38	F		
1-20	G		

Every care has been taken to ensure that the details in this brochure represent an accurate description of the property. However, we wish to inform prospective purchasers that these sales particulars are a general guide and none of the statements or dimensions should be relied upon as statements of representation or fact. Transparency of referral fees: We're legally required to inform you that we receive referral income from the following solicitors and surveyors up to the value of £125.00 per transaction; Archer Rusby Solicitors LLP, Taylor Walton Solicitors, Hanney Dawkins & Jones Solicitors, New Homes Law, Edwards Willoby & Loch, Woodward Surveyors & Trend & Thomas Surveyors. For financial services we recommend Severn Financial from which we don't take a referral fee but one of our directors does have a vested interest in the business. We also recommend Meridian Mortgages and receive an average referral income of £288.40 per transaction. Although we recommend these companies because we believe they offer an excellent service, you are not under any obligation to use them.

sewell &  
gardner