



LONDON  
SQUARE

**GREENWICH**

SE10



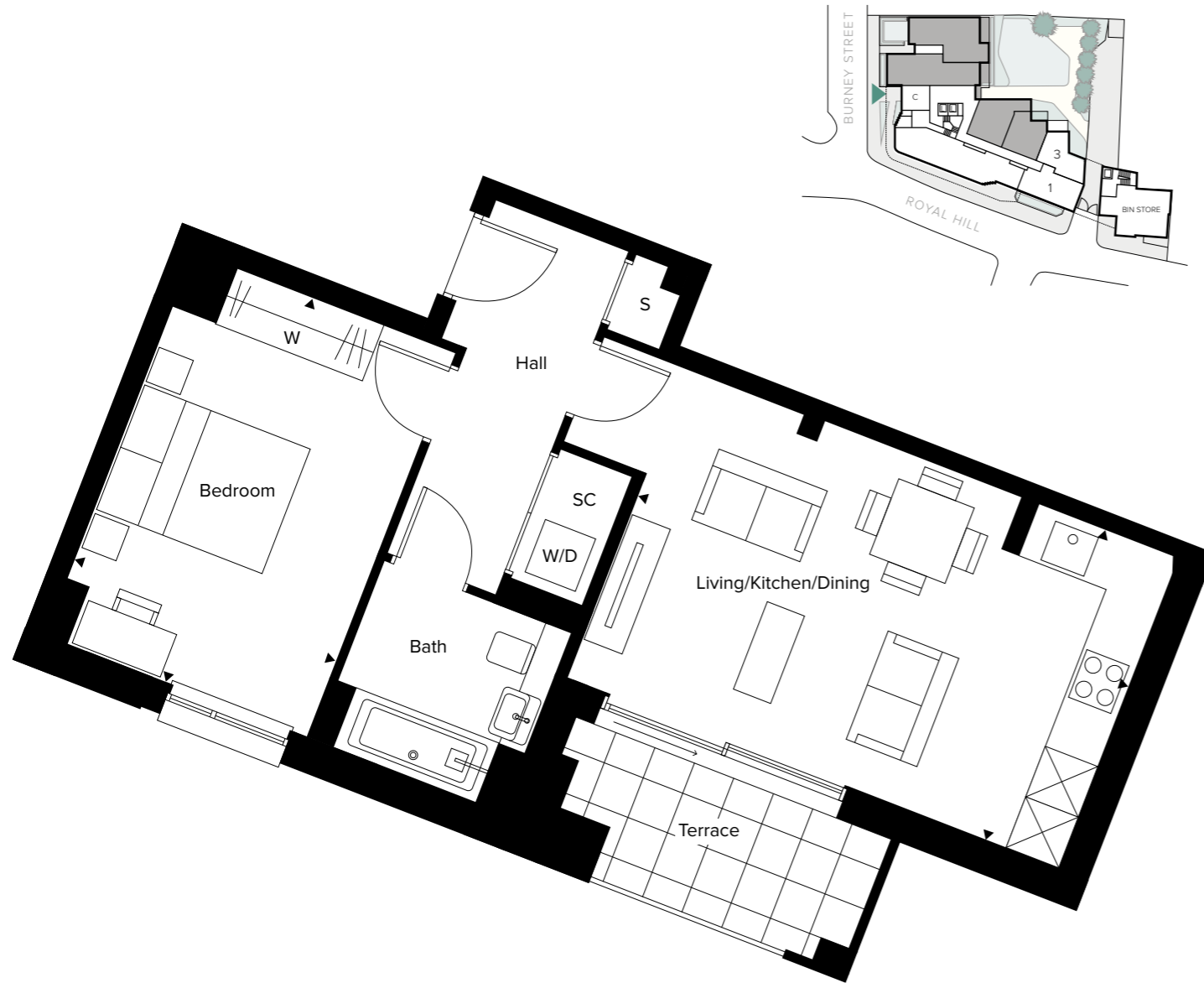
COMPUTER GENERATED IMAGE IS INDICATIVE ONLY

SHARED OWNERSHIP APARTMENTS  
BY LONDON SQUARE  
IN PARTNERSHIP WITH PEABODY



# ONE BEDROOM APARTMENT THE ARUNDEL

## PLOT 1

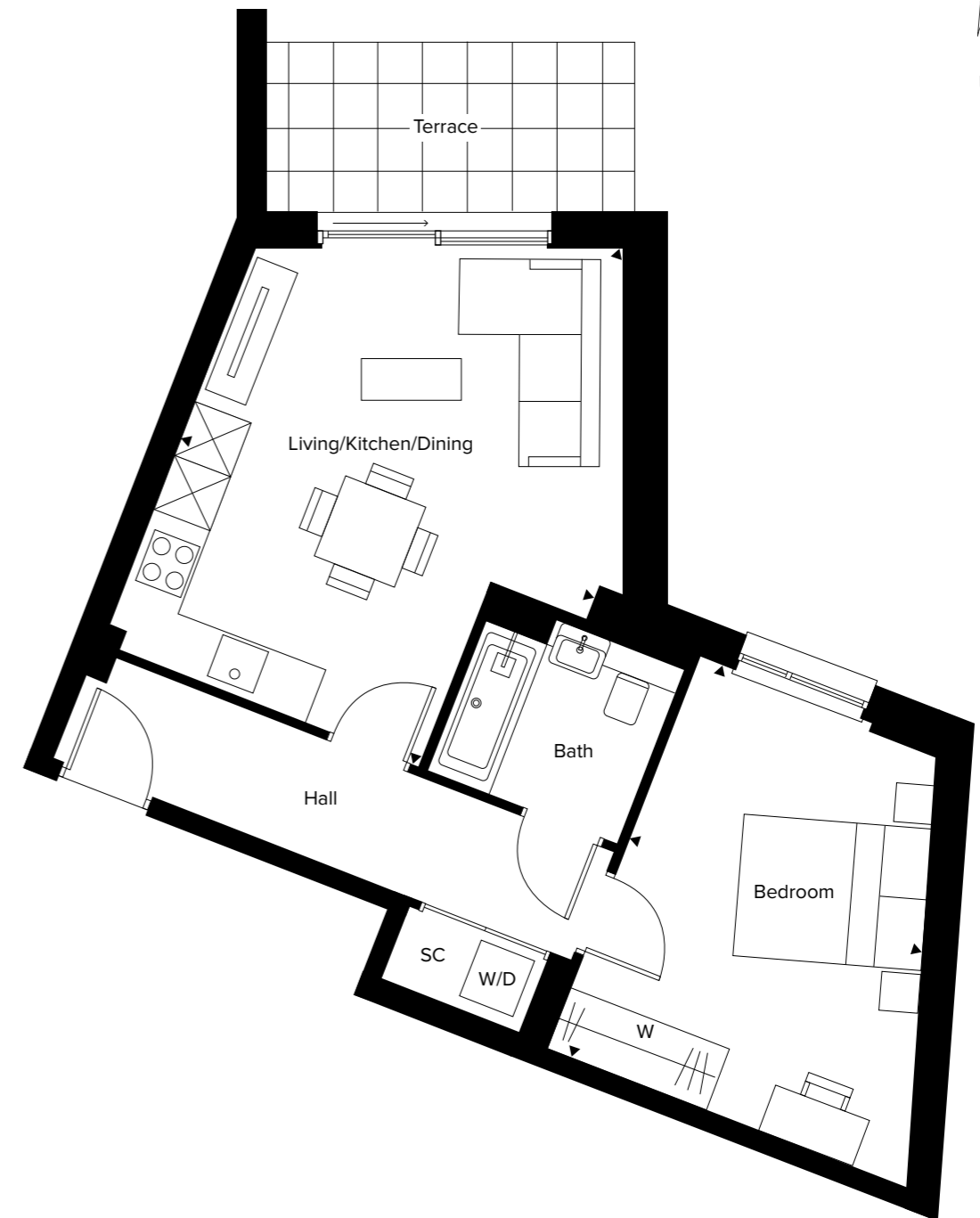


Living/Kitchen/Dining	5.90m x 3.70m	19'5" x 12'2"
Bedroom	4.61m x 3.15m	15'2" x 10'4"

Floorplans are not to scale, please ask sales executive for further information.

# ONE BEDROOM APARTMENT THE LENNOX

## PLOT 3



Living/Kitchen/Dining	5.85m x 4.66m	19'4" x 15'4"
Bedroom	4.42m x 3.31m	14'6" x 10'10"

**KEY**

SC	-	Service Cupboard
S	-	Store
W	-	Fitted Wardrobe
W/D	-	Optional Wardrobe
WD	-	Washer Dryer

Floorplans are not to scale, please ask sales executive for further information.



#### GENERAL

- Charcoal Grey timber veneer entrance door
- White flush internal doors with contemporary matt black ironmongery
- Underfloor heating throughout
- Herringbone Amtico Spacia flooring to the hallway, living, dining, kitchen area\*
- A choice of carpet to the bedrooms\*
- Fitted wardrobe with full height hinged doors to the principal bedroom in a choice of colour options\* with long length vertical matt black handle bars
- White painted walls and ceilings throughout with bathrooms and en-suites in a feature grey colour
- Freestanding washer dryer located in hall cupboard
- Paved balcony or terrace where applicable
- Aluminium windows and patio doors, sliding doors where applicable

#### ELECTRICAL

- Stainless steel sockets with black inserts above kitchen worktop. White screwless sockets and switches throughout the remainder of the apartment
- USB port to the principal bedroom and second bedrooms either side of the bed, living room to sofa location and a further port fitted above the kitchen worktop



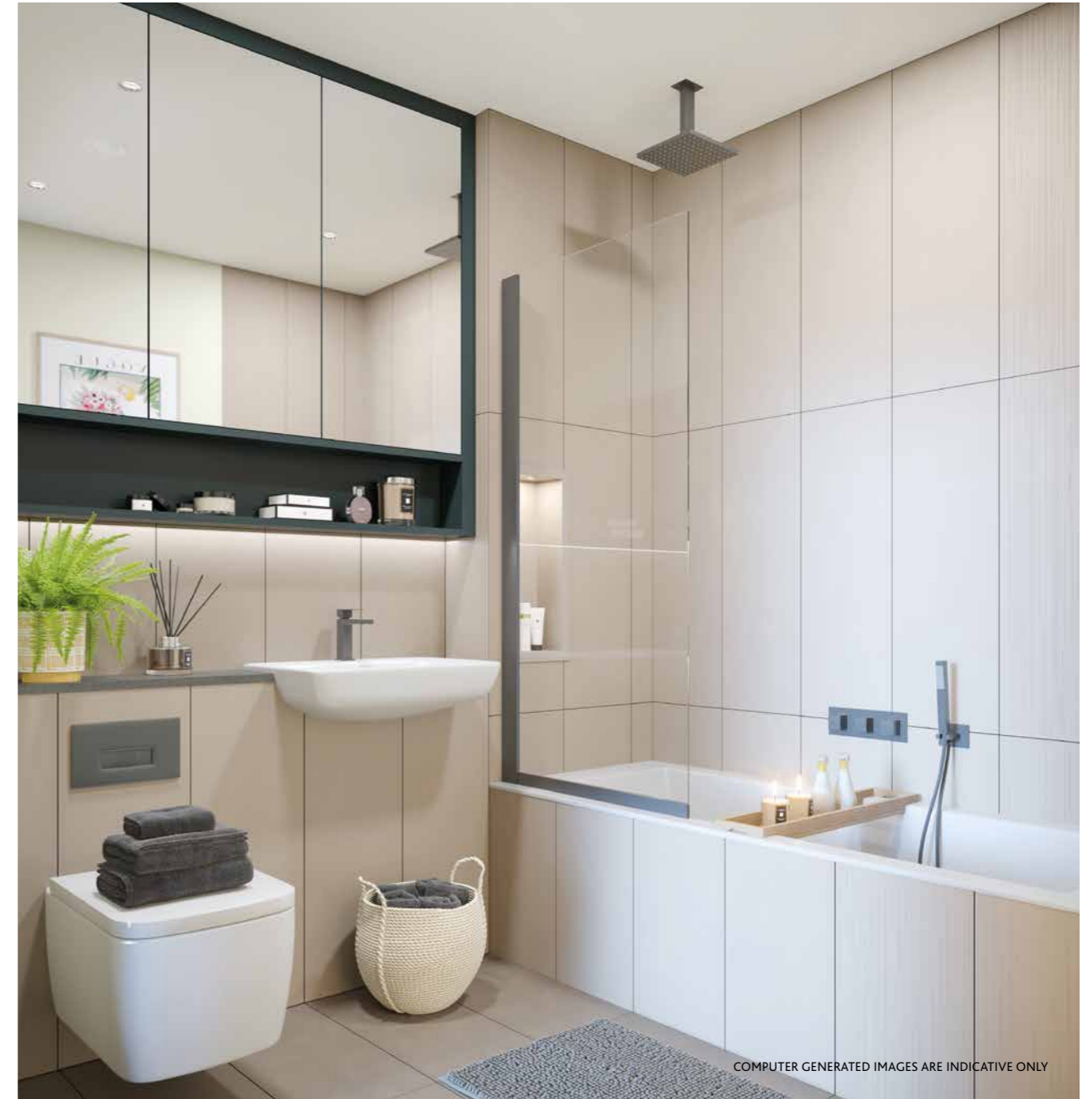
- Recessed downlights throughout with pendant lighting to the bedrooms
- Communal aerial and wired for SkyQ, Virgin Media, BT and Hyperoptic connections with data points in living area and all bedrooms.
- Designated work from home station with power and data
- External light to balcony/terrace

#### SECURITY & PEACE OF MIND

- Door entry system via mobile phone
- Security locks to windows, balcony, terrace
- Hardwired smoke alarms and detection
- Heat detection to the kitchen
- The development adopts the Gold standard Secured by Design initiative
- Ten year NHBC Warranty
- 2 year London Square Customer Service Warranty

#### KITCHEN

- Two tone kitchens with base and tall units in a choice of matt lacquered laminate colour ways with matt black bar handles and handleless wall units in a contrasting timber grain resin matt finish
- A choice\* of Silestone worktops with full height silver mirrored splashback
- LED strip lighting fitted to the underside of wall units
- Stainless steel underslung sink with single level matt black mixer tap
- Siemens stainless steel integrated single oven
- Siemens stainless steel integrated microwave
- Siemens black glass induction hob
- Integrated fridge / freezer
- Integrated dishwasher (slimline where applicable)
- Integrated concealed extractor



COMPUTER GENERATED IMAGES ARE INDICATIVE ONLY

#### BATHROOM

- Large format vertical tiling with a feature tile strip in a choice of two colour ways\*
- Semi recessed basin set within a Silestone vanity shelf available in a choice of colour options\*
- Bespoke framed mirror with feature shelf below in an option of colour finishes\* and LED strip lighting to underside. (Mirrored cabinet in 1 bed with no En-suite)
- Wall hung WC with soft close lid and dual flush plate in matt black finish
- Single ended bath with shower overhead. Fixed ceiling mounted square shower head, hand held shower, thermostatic controls and hinged glass shower screen
- Feature tiled niche within the shower enclosure with pin light
- Matt black Vado brassware
- Black ladder heated towel rail

#### COMMUNAL

- Lift and Stair access to all floors
- Communal landscaped courtyard
- Cycle store
- Refuse store
- Concierge

