



22 Crecy Avenue, Doncaster, DN2 6LY
Offers In Excess Of £130,000 Freehold



Crecy Avenue, Intake

3 Bedrooms, 1 Bathroom

Offers In Excess Of £130,000

- Available Chain Free
- Three bedroom semi detached
- Off Road parking
- Enclosed Garden
- Kitchen/diner
- Close to Doncaster City Centre
- Close to local amenities

Attention Investors/ First time buyers: A three bedroom semi detached property available in Intake, with off road parking and private garden. Briefly comprising of a living room, kitchen/diner and bathroom on the ground floor. There are two double bedrooms, single bedroom and wc on the first floor. There is space for off road parking at the front and an enclosed private garden to the rear. Call now to arrange a viewing.

%epcGraph_c_1_363%



LIVING ROOM 13' 3" x 13' 6" (4.04m x 4.13m) Front facing living room with large window, Feature fireplace and double doors leading into the kitchen/diner. Newly paid carpets

KITCHEN/DINER 20' 1" x 8' 1" (6.14m x 2.48m) Spacious kitchen/ diner with a range of oak effect wall and base units, complemented with dark grey counter tops. Integrated oven and gas hob. You will benefit from patio doors leading onto the garden and space for a dining table.

BATHROOM 6' 3" x 7' 1" (1.93m x 2.16m) Ground floor bathroom with white three piece suite, over bath shower, fully tiled.

BEDROOM 13' 1" x 9' 10" (4.01m x 3.02m) Double bedroom with new carpets

BEDROOM 11' 4" x 12' 0" (3.47m x 3.67m) Second double bedroom with new carpets

BEDROOM 8' 6" x 8' 10" (2.60m x 2.70m) Single bedroom with new carpet

WC 6' 10" x 3' 2" (2.09m x 0.97m) First floor wc.

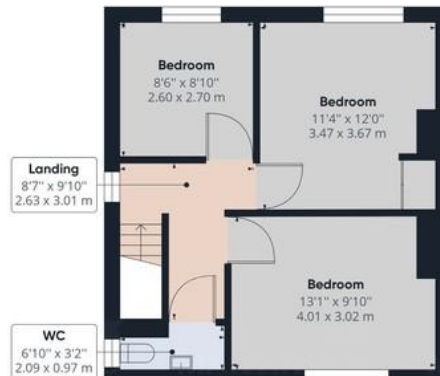








Ground Floor



Approximate total area⁽¹⁾
848.43 ft²
78.82 m²

(1) Excluding balconies and terraces

While every attempt has been made to

Martin & Co Doncaster

38 Hall Gate • Doncaster • DN1 3NR
T: 01302 343 494 • E: doncaster@martinco.com

01302 343 494

<http://www.martinco.com>



Accuracy: References to the Tenure of a Property are based on information supplied by the Seller. The Agent has not had sight of the title documents. A Buyer is advised to obtain verification from their Solicitor. Items shown in photographs including but not limited to carpets, fixtures and fittings are not included unless specifically mentioned within the sales particulars. They may however be available by separate negotiation. Buyers must check the availability of any property and make an appointment to view before embarking on any journey to see a property. No person in the employment of the agent has any authority to make any representation about the property, and accordingly any information given is entirely without responsibility on the part of the agents, sellers(s) or lessors(s). Any property particulars are not an offer or contract, nor form part of one. **Sonic / Laser Tape:** Measurements taken using a sonic / laser tape measure may be subject to a small margin of error. **All Measurements:** All Measurements are Approximate. **Services Not tested:** The Agent has not tested any apparatus, equipment, fixtures and fittings or services and so cannot verify that they are in working order or fit for the purpose. A Buyer is advised to obtain verification from their Solicitor or Surveyor.

