



LAWRENCE RAND

Garden Close, Ruislip

£325,000



Garden Close

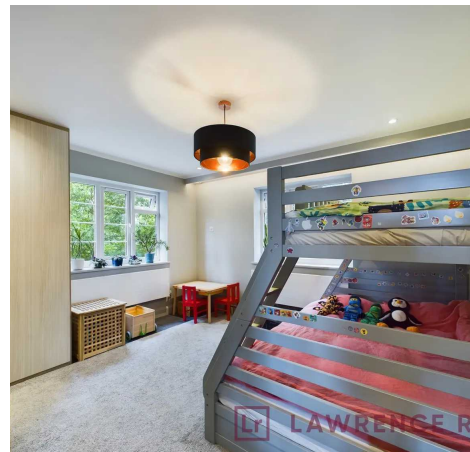
Ruislip, Ruislip

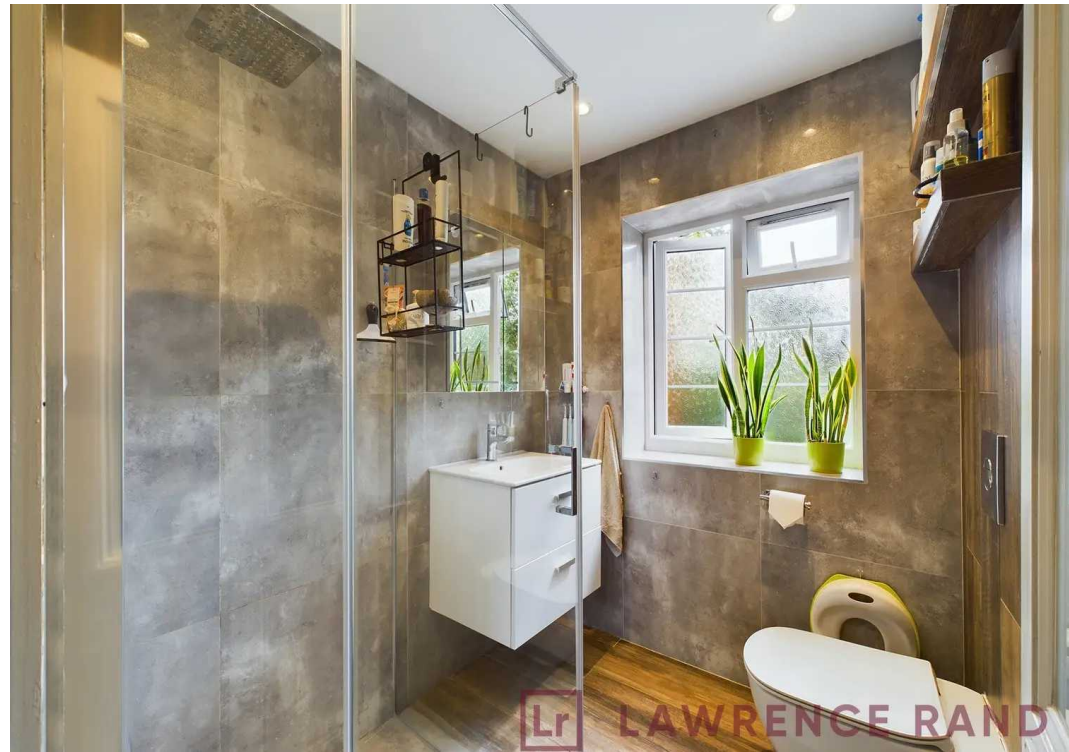
An exceptional 2 double bedroom top floor flat that has been extensively updated by the current owner in the last 3 years. Close to Ruislip station, a number of local schools and a complete chain above.

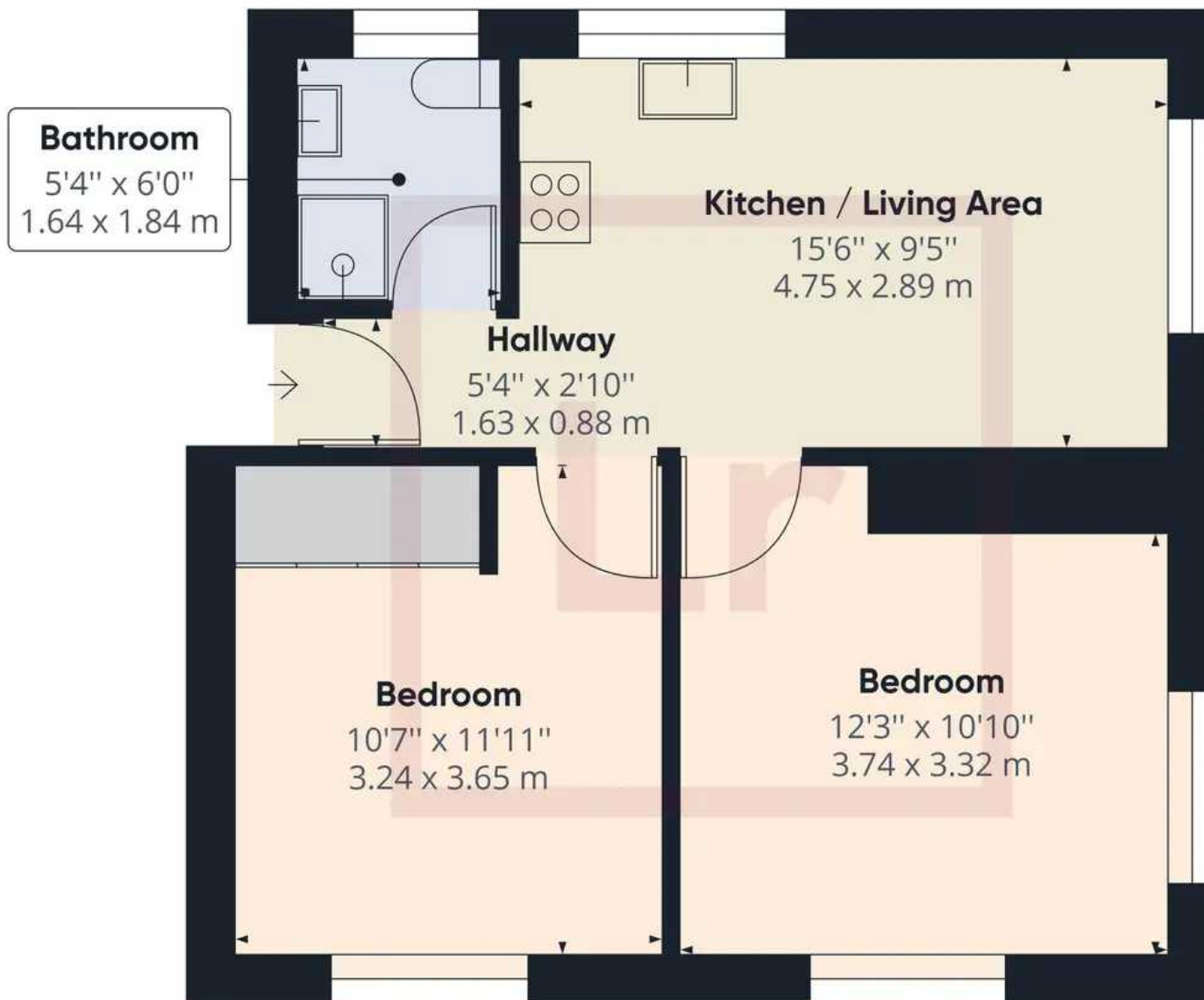
Council Tax band: C

Tenure: Leasehold

- 2 Double bedrooms
- Fully modernised in last 3 years
- Re-wired & re-plumbed
- New double glazing, boiler & radiators
- New kitchen
- New bathroom
- Close to shops, station & schools
- Large communal gardens







Approximate total area⁽¹⁾

479.20 ft²

44.52 m²

(1) Excluding balconies and terraces

While every attempt has been made to ensure accuracy, all measurements are approximate, not to scale. This floor plan is for illustrative purposes only.

GIRAFFE 360



Lawrence Rand

Lawrence Rand, 106 Victoria Road - HA4 0AL

01895 632211

Info@lawrence-rand.co.uk

www.lawrence-rand.co.uk/



LAWRENCE RAND