



22 Bateman Court Forestfield, Crawley

In Excess of **£260,000**


INSPIRE



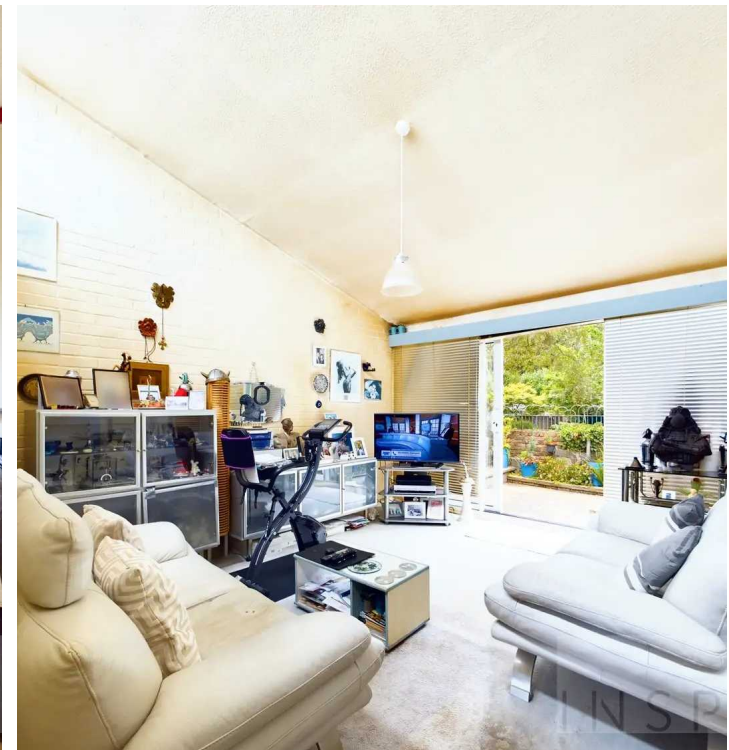
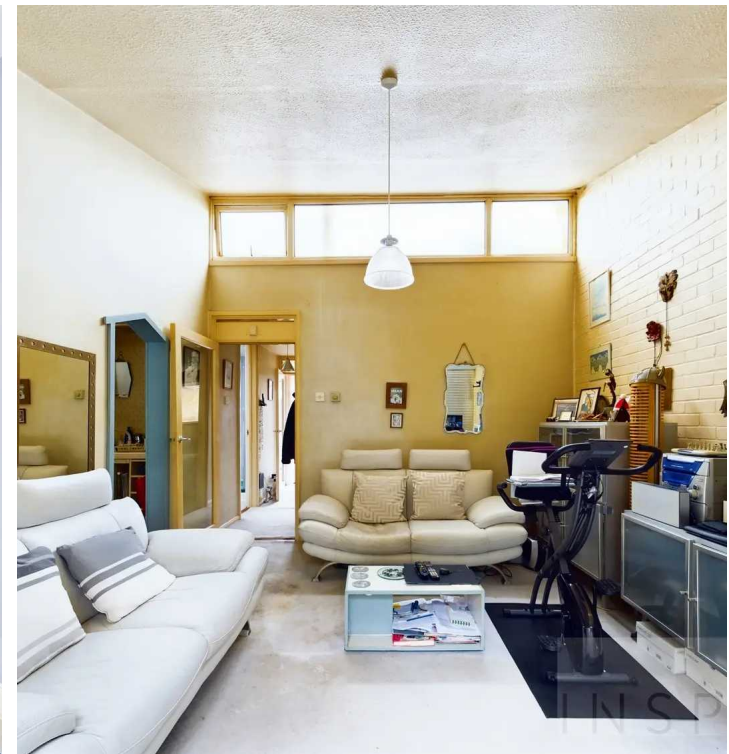
22 Bateman Court Forestfield

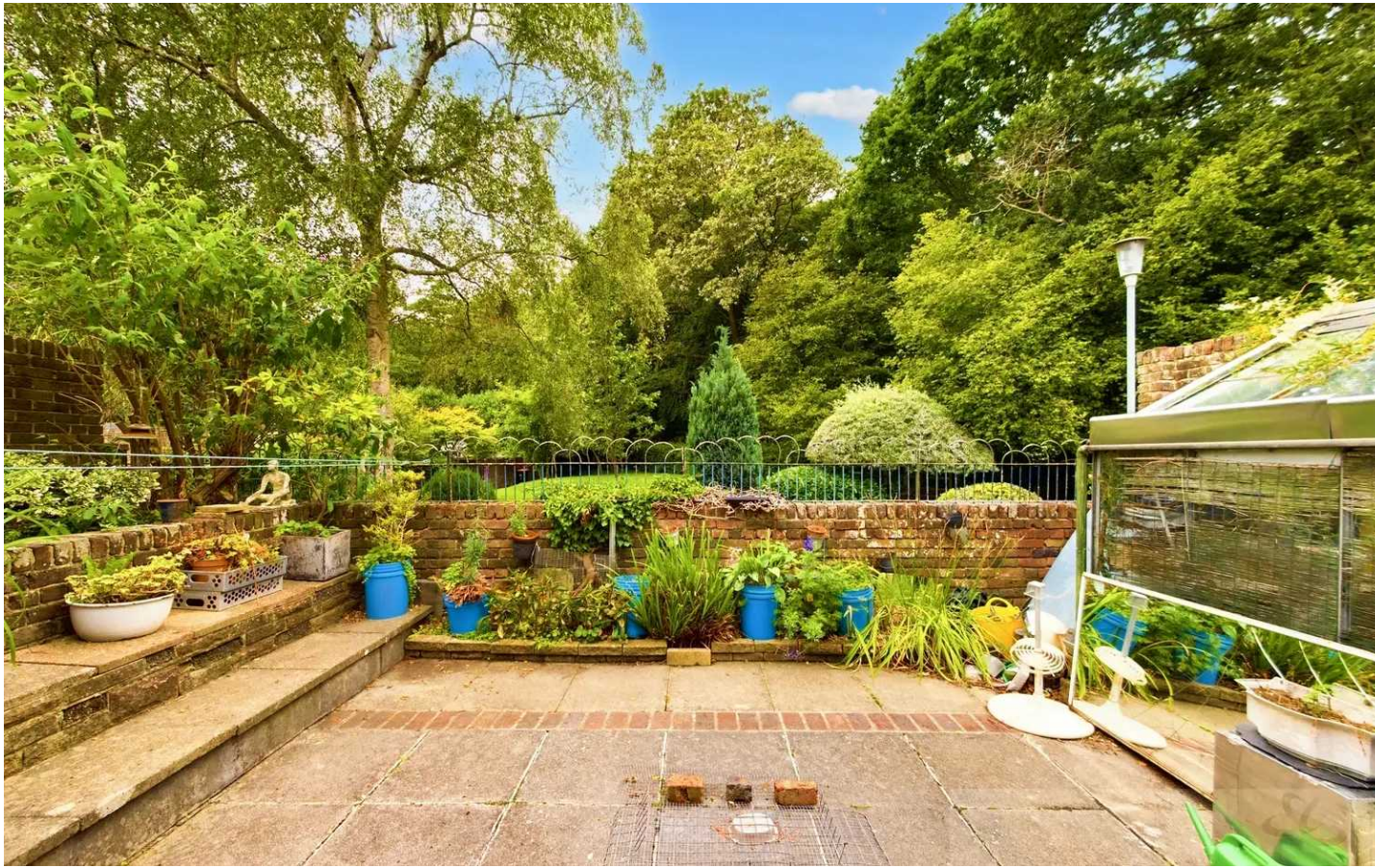
Crawley, Crawley

Council Tax band: B

Tenure: Leasehold

- One Double Bungalow
- CASH BUYERS ONLY
- Detached
- Private Garden
- Conservation area
- Sought after Forestfield
- Leasehold
- Shower Room





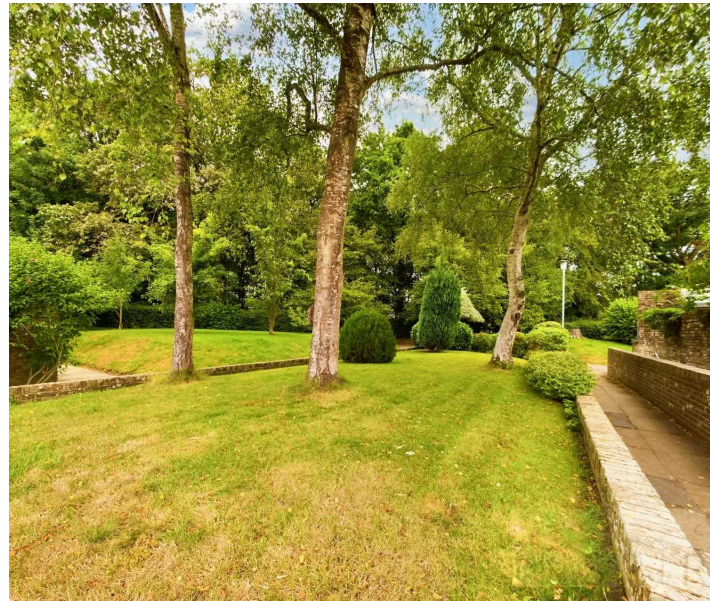
Hallway
8' 5" x 3' 2" (2.57m x 0.96m)

Lounge
13' 9" x 11' 11" (4.18m x 3.62m)

kitchen
13' 5" x 5' 7" (4.09m x 1.70m)

Bedroom
11' 5" x 8' 8" (3.49m x 2.63m)

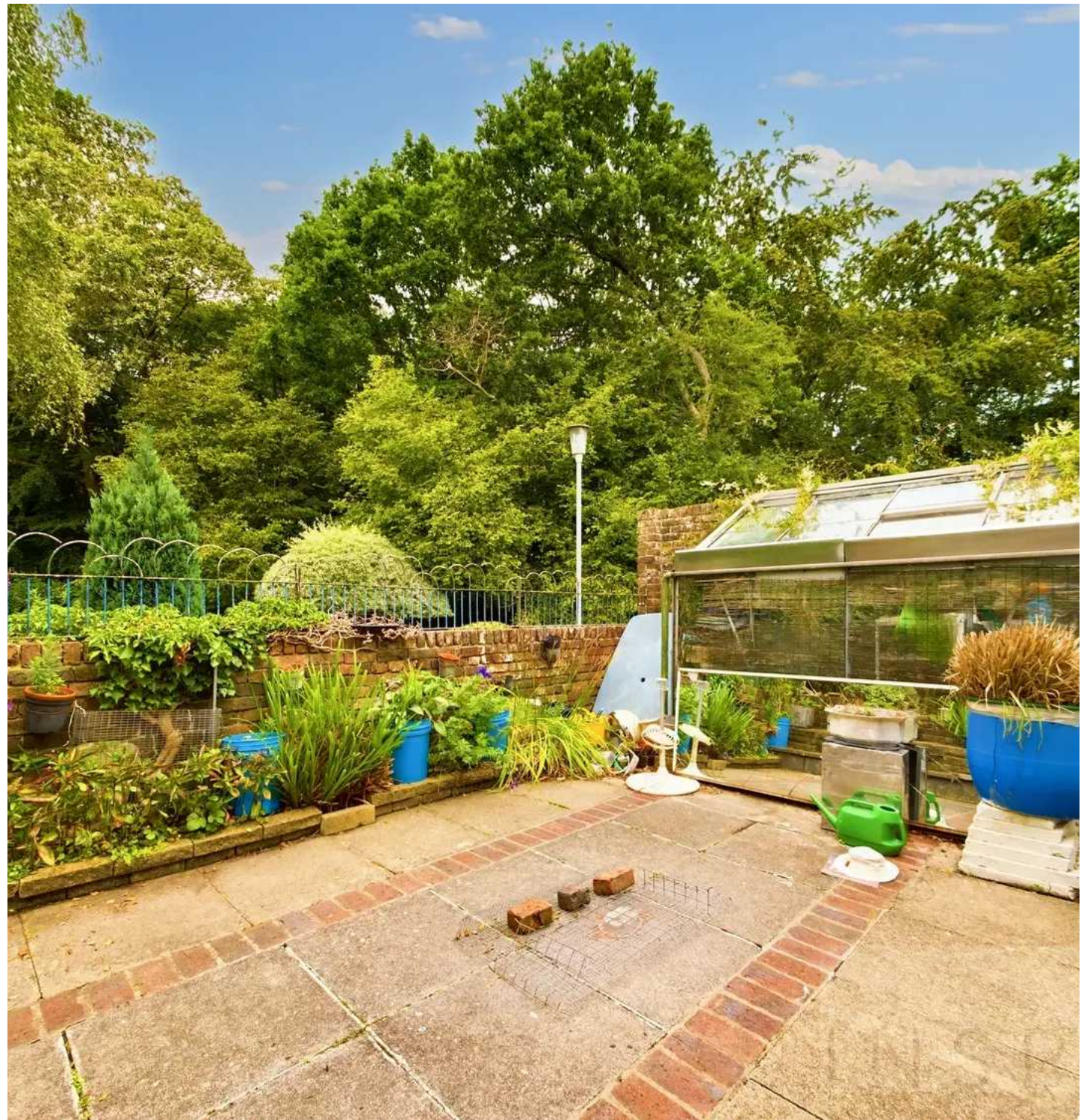
Bathroom
6' 4" x 5' 7" (1.92m x 1.70m)



GARDEN

GARAGE

Single Garage





Approximate total area⁽¹⁾
41.68 m²

(1) Excluding balconies and terraces

While every attempt has been made to ensure accuracy, all measurements are approximate, not to scale. This floor plan is for illustrative purposes only.

GIRAFFE 360



Inspire

13 Tilgate Parade, Crawley - RH10 5EQ

01293 582335

info@inspirestates.co.uk

<http://www.inspirestates.co.uk>

INSPIRE

