



Nobles Close, Grove

Guide Price £290,000

Wantage

Simpsons

The Proactive Agent



SCAN THE
QR CODE
FOR DETAILS





Nobles Close, OX12

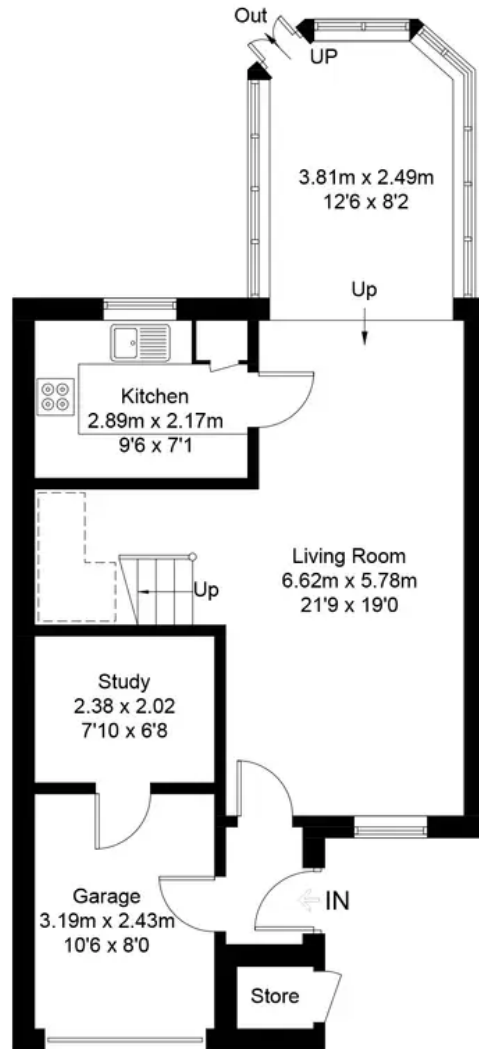
Approximate Gross Internal Area = 90.4 sq m / 973 sq ft

Garage = 7.8 sq m / 84 sq ft

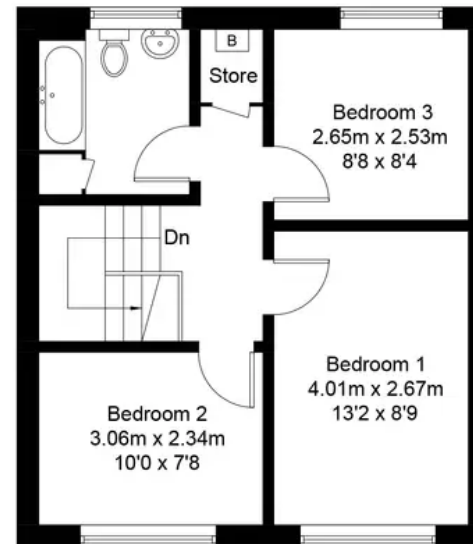
Total = 98.2 sq m / 1057 sq ft

External Area = 122.2 sq m / 1315 sq ft

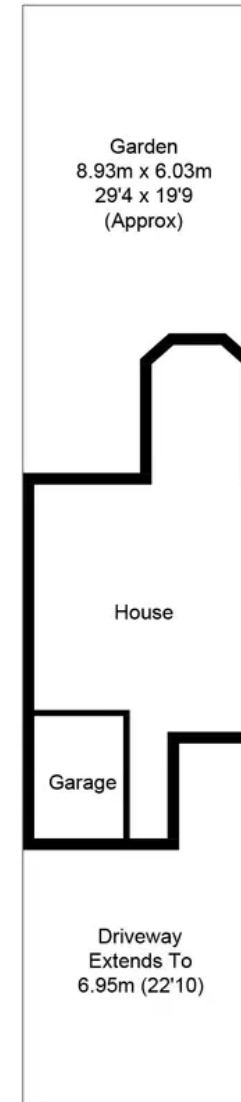
For identification only - Not to scale



Ground Floor



First Floor



Nobles Close

Grove, Wantage

A well-presented three bedroom home in a cul-de-sac location with a garage and off-street parking, close to shops and local amenities.

Council Tax band: C

Tenure: Freehold

- Integral garage and off-street parking
- Within catchment for Grove CofE and Millbrook
- Includes a home office and second reception room



SCAN THE
QR CODE
TO BOOK
YOUR VIEWING



