

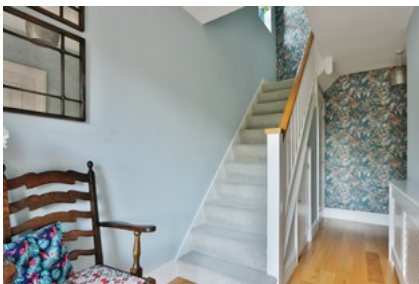


## Front Street, Locking

**INVITING OFFERS BETWEEN £325,000 - £350,000**



**Check out the video!**



- ✓ Refurbished Semi Detached Property
- ✓ Sought After Village Location With Far Reaching View
- ✓ Open Plan Living Dining Kitchen
- ✓ Off Road Parking And Garage
- ✓ Garden With Patio Area And Vegetable Plots
- ✓ Freehold
- ✓ Council Tax Band D
- ✓ Epc Rating D

Guide Price **£325,000**

Bedroom 3 Bathroom 1 Reception 1