



37 Devonshire Square, Southsea

Offers in Region of £280,000

 chinneckshaw



37 Devonshire Square

Southsea

Welcome to this charming mid-terraced home located on Devonshire Square in Southsea. Featuring the iconic bay and forecourt style, this residence offers a delightful blend of traditional features and modern comforts.

Step into the inviting front reception room, with warm wood flooring and tasteful decor, the current owners have created a cozy feel. The hallway (featuring original archway) leads you to the staircase, with ample under stairs storage for your convenience. The heart of the home, a traditional kitchen benefits from plenty of storage and counter top space. Beyond, the dining room boasts an original fireplace, infusing the space with character. The patio doors open to reveal a tranquil patio garden and also has rear pedestrian access enhancing your ease of living.

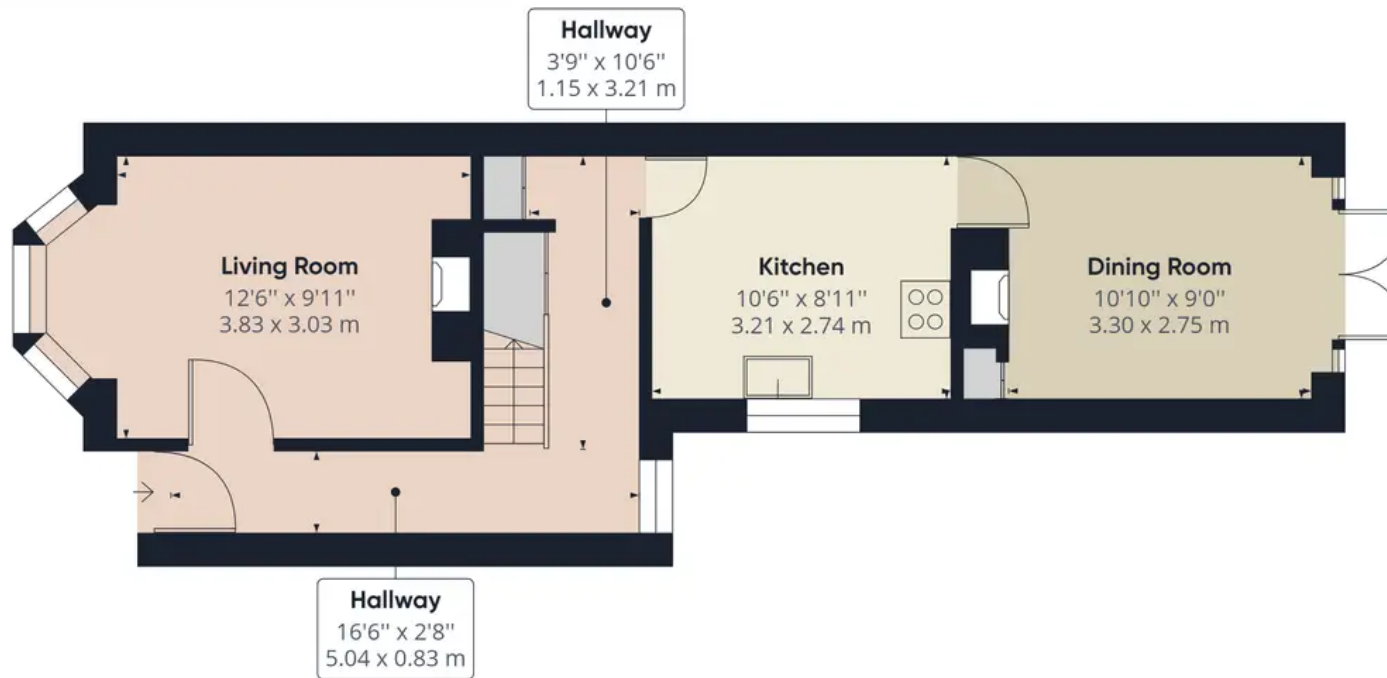
Journeying upstairs, you'll discover three well-appointed bedrooms and a bathroom. The principal bedroom to the front, offers a serene retreat. The bathroom, cleverly situated above the stairs, features a neutral white suite and up an over shower. The middle bedroom, currently used as an office, presents the potential for a delightful single bedroom, accentuated by a double glazed window to the side elevation.

The third bedroom, generously sized and nestled at the rear, completes the upper level, providing ample space for relaxation. This property harmonizes style with practicality, offering the perfect canvas for your personalized touch. Don't miss the opportunity to make this enchanting Southsea abode your own.

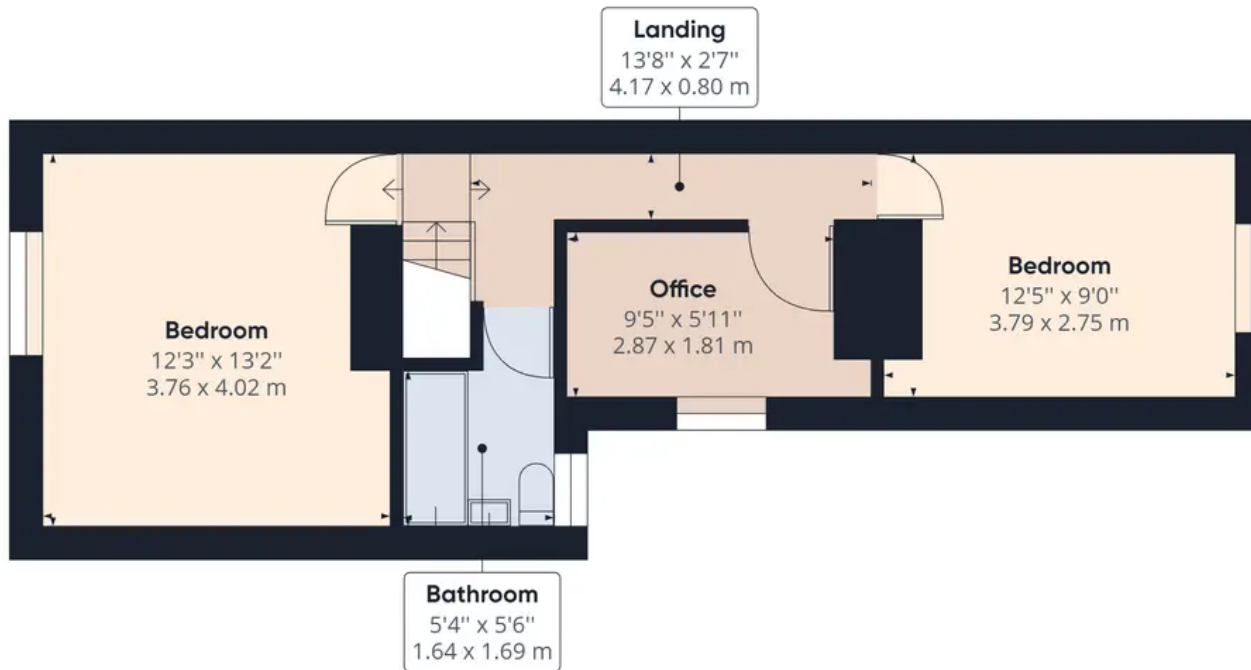
Council Tax band: B

Tenure: Freehold





Ground Floor



Floor 1

Approximate total area⁽¹⁾

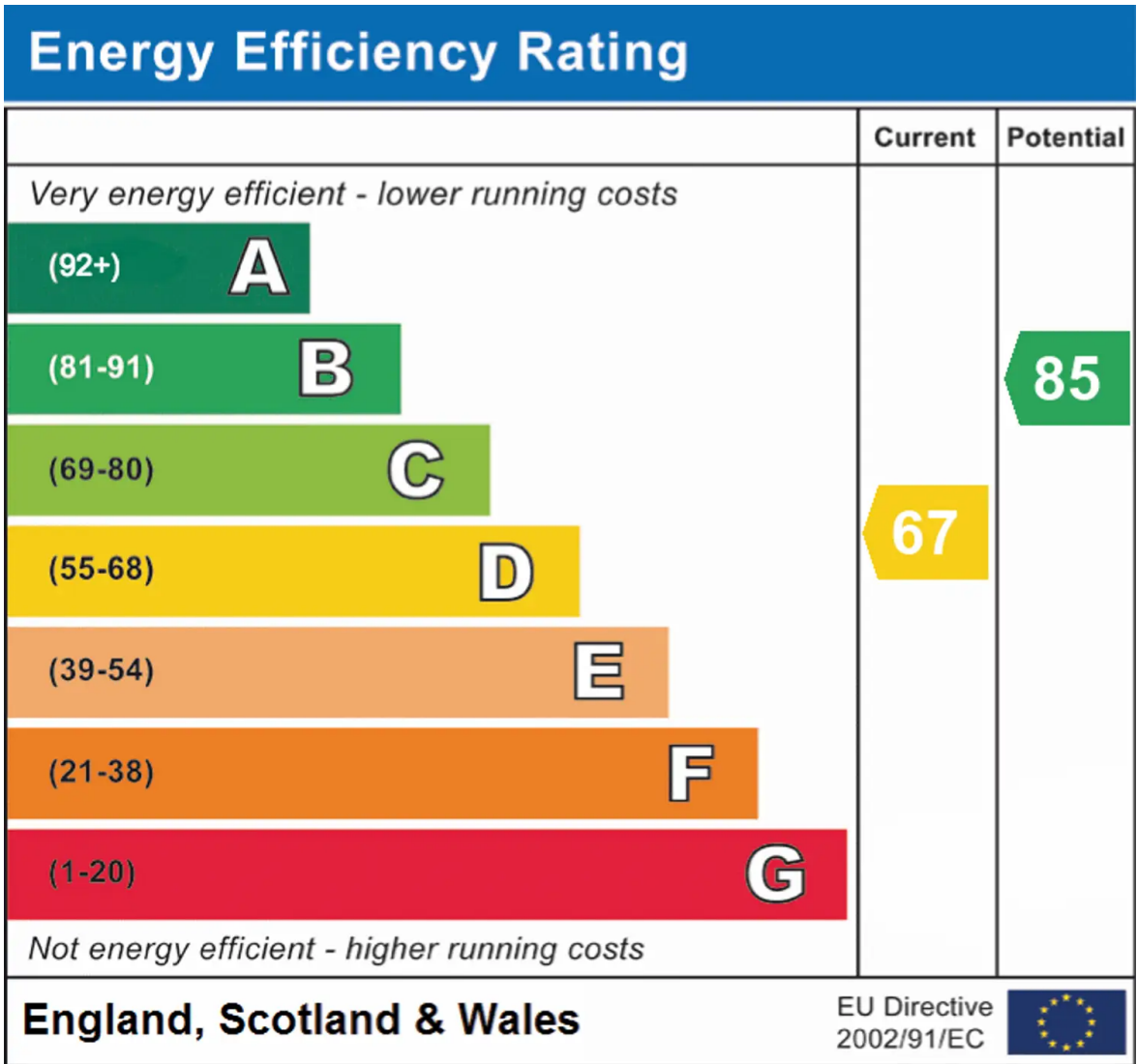
852.97 ft²

79.24 m²

(1) Excluding balconies and terraces

While every attempt has been made to ensure accuracy, all measurements are approximate, not to scale. This floor plan is for illustrative purposes only.

GIRAFFE 360



Chinneck Shaw

Bridge House, Milton Road, Portsmouth – PO3 6AN

023 9282 6731

hello@chinneckshaw.co.uk

www.chinneckshaw.co.uk/

Chinneck Shaw, Bridge House, Milton Road, PO3 6AN Consumer Protection from Unfair Trading Regulations 2008: These details are for guidance only and complete accuracy cannot be guaranteed. If there is any point which is of particular importance, verification should be obtained. The do not constitute a contract or part of a contract. All measurements are approximate. No guarantee can be given with regard to planning permissions or fitness for purpose. No apparatus, equipment, fixture or fitting has been tested. Items shown in the photographs are NOT necessarily included. Interested Parties are advised to check availability and make an appointment to view before travelling to see a property.