



LAWRENCE RAND

Bridgwater Road, Ruislip

£440,000



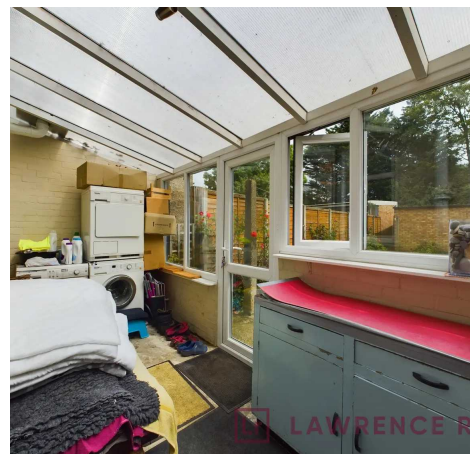
Bridgwater Road

Ruislip, Ruislip

A mid-terrace two bedroom house, set in a popular road just a short walk to shops, amenities and transport links with ample size rooms ideal for the growing family. Offers a garage with rear vehicle access, potential to further extend (stpp) and NO ONWARD CHAIN. Council Tax band: D

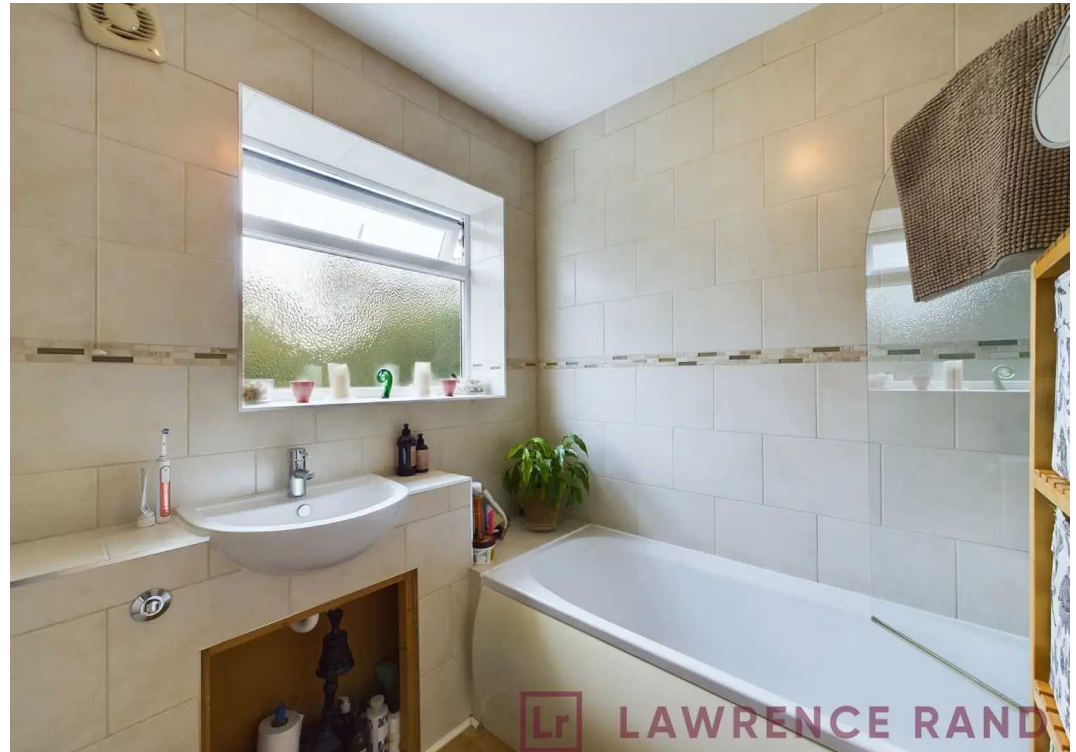
Tenure: Freehold

- NO ONWARD CHAIN
- Two double bedrooms
- Rear garden
- Potential to extend (stpp)
- Garage to rear - 19'7 (5.97) x 10'5 (3.18)
- Close to Station, shops & schools





Lr LAWRENCE RAND



Lr LAWRENCE RAND



Lr LAWRENCE RAND



Lr LAWRENCE RAND



Ground Floor

Approximate total area⁽¹⁾

737.20 ft²

68.49 m²



Floor 1

(1) Excluding balconies and terraces

While every attempt has been made to ensure accuracy, all measurements are approximate, not to scale. This floor plan is for illustrative purposes only.



Lawrence Rand

Lawrence Rand, 106 Victoria Road - HA4 0AL

01895 632211

Info@lawrence-rand.co.uk

www.lawrence-rand.co.uk/



LAWRENCE RAND