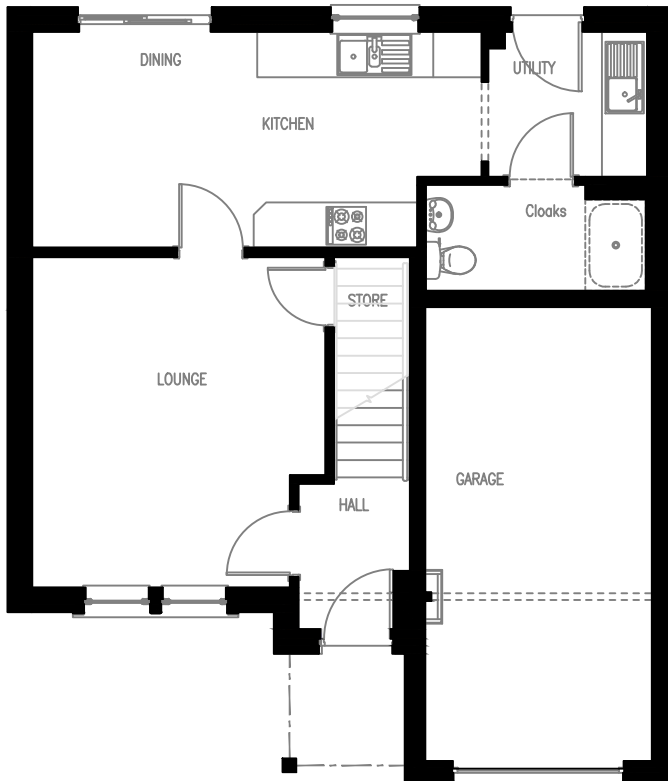


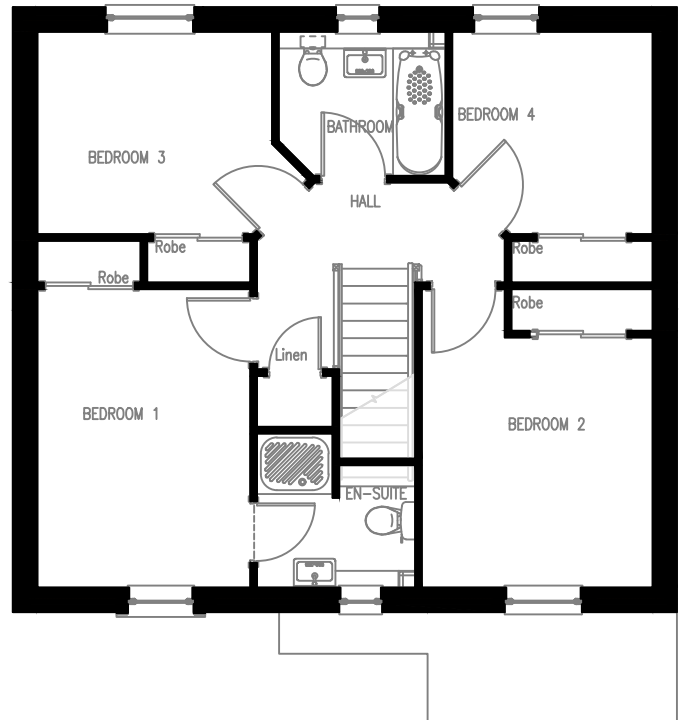
GIGHA 16



FRONT ELEVATION



GROUND FLOOR



FIRST FLOOR

LOUNGE	3.88 x 4.37 m	12' 9" x 14' 4"
DINING/KITCHEN	5.94 x 2.85 m	19' 6" x 9' 4"
UTILITY	1.92 x 1.92 m	6' 3" x 6' 3"
CLOAKS	2.95 x 1.40 m	9' 8" x 4' 7"
BEDROOM 1	2.81 x 3.94 m	9' 3" x 12' 11"
BEDROOM 2	3.05 x 3.30 m	10' 0" x 10' 10"
BEDROOM 3	3.10 x 2.68 m	10' 2" x 8' 9"
BEDROOM 4	2.65 x 2.68 m	8' 8" x 8' 9"
BATHROOM	2.21 x 1.91 m	7' 3" x 6' 3"
EN-SUITE 1	2.09 x 2.03 m	6' 10" x 6' 8"
GARAGE	3.00 x 6.00 m	9' 10" x 19' 8"

Muir™
HOMES

Drawing No1269–Bro01 Revision A Dated 18.04.18

This house type is built in a number of finishes which vary from development to development and plot to plot. Muir Homes maintain a policy of continuous assessment and improvement therefore specifications are subject to modification. Our illustrations have been produced to give you a guide as to appearance and layout. These particulars do not form the basis of any contract.