



JAMES PYLE & Co.

1 Seagry Barn, Nables Farm, Upper Seagry, Chippenham, SN15 5HB

Exceptional contemporary barn conversion
 Fully integrated open plan kitchen/dining room
 4 double bedrooms, 2 bathrooms
 Beautiful rural setting
 Rent inclusive of water rates
 Electric car charging point



Approximately 2,002 sq ft

£2,850 pcm



“An exceptional four-bedroom barn conversion nestled within an exclusive rural setting on the outskirts of Upper Seagry”

The Property

DESCRIPTION 1 Seagry Barn is an end of terrace barn conversion in the grounds of Nables Farm, rurally located near the village of Upper Seagry. This impressive and superbly designed conversion has an exceptional contemporary finish with air source pump heating and an electric car charging port. The light and airy open plan kitchen/living/dining room is accentuated by high ceilings and large windows with delightful views over the surrounding countryside. Downstairs there is also a utility room, WC and bedroom 4 would also make a good home office. Upstairs is the master bedroom with en-suite shower room and a walk-in dressing room. There are two further double bedrooms and a family bathroom.

Outside is a courtyard garden, off street parking including an electric car charging port.

The accommodation is offered on either a furnished or unfurnished basis for a minimum of 12 months.

SITUATION Upper Seagry is an attractive and well-regarded village situated in rural North Wiltshire and has an excellent sense of community. The village has a popular primary school, The New Inn pub and Church. The nearby larger village of Great Somerford has a post office and shop, pub and primary school as well. The market towns of Malmesbury and Chippenham are both about 5 miles away with a further range of facilities and schooling. There are excellent sporting opportunities within the area with golf ranges at Bowood, Castle

Combe and Minchinhampton, racing at Bath and Newbury whilst there is ample range of water sports available at the Cotswolds Water Park. The property is well located for the commuter, with train stations at Chippenham and Swindon having regular services to London Paddington, and junction 17 of the M4 is close by providing fantastic connections to Bath, Bristol, Swindon and London.

Directions

From M4 Junction 17 follow signs A429 towards Malmesbury and then take the first turning on the right. Follow this road for a couple of miles and the entrance for Nables Farm is on the left. Proceed down the driveway and follow the road around to the left and park in front of Seagry Barns.

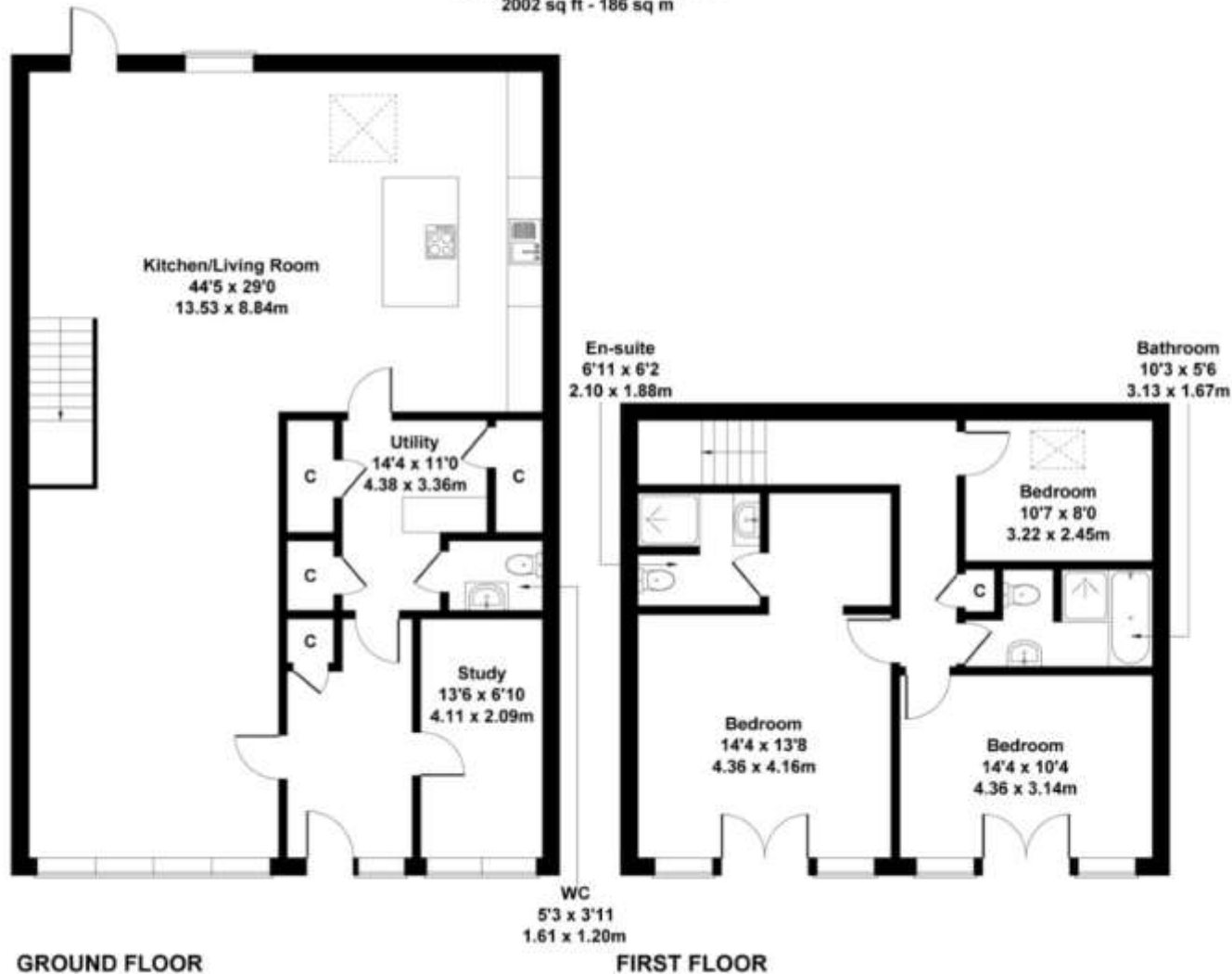
Local Authority
 Wiltshire County Council

Council Tax Band
 E £2,709

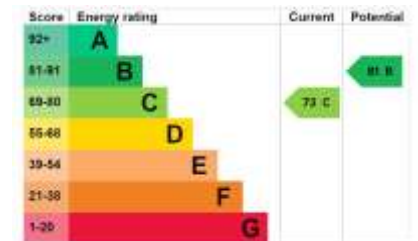


Seagry Barn , Nables Farm , Scotland Hill , Upper Seagry , SN15 5HB

Approximate Gross Internal Area
2002 sq ft - 186 sq m



Not to Scale. Produced by The Plan Portal 2023



James Pyle Holdings Ltd and any parties they are acting for hereby give notice that these details are for guidance only and cannot guarantee accuracy of any description, dimension, condition or any required permission for occupation and use. It is not company policy to test any services or appliances in properties offered for sale and these should be verified by the purchaser's solicitors. James Pyle Holdings Ltd will not be liable for any loss arising from the use of these details. No responsibility is taken for any errors, omissions or misstatements within these particulars. It should not be assumed that the property has all the necessary planning, building regulation or other consents. These particulars do not form any part of any offer or contract and must not be relied upon as statements or representations of fact. James Pyle & Co is a trading name of James Pyle Holdings Ltd, registered in England & Wales. Registered number 10927906

COTSWOLD & COUNTY (HEAD OFFICE)

The Barn, Swan Barton, Sherston SN16 0LJ

01666 840 886 or 01452 812 054

LONDON (ASSOCIATE OFFICE)

121 Park Lane, Mayfair W1k 7AG

0207 0791 577