



11 Burneside Road, Kendal
£230,000





11 Burnside Road

Kendal

A traditional stone built mid terrace period property situated in a popular residential area within the market town of Kendal being convenient for the amenities on offer both in and around the town and offering easy access to the Lake District and Yorkshire Dales National Parks and the M6.

The accommodation, which is both well proportioned and deceptively spacious, is laid to four floors and briefly comprises sitting room, dining room and kitchen on the ground floor, three bedrooms and a bathroom on the first floor, a further bedroom on the second floor and a shower room with ample utility space in the basement. The property benefits from double glazing to all but the fanlight window over the entrance door and the kitchen door at the rear. There is gas central heating throughout.

There is a patio garden located at the rear.

On road parking applies.

11 Burnside Road is offered for sale with no upper chain.

ENTRANCE HALL

Double glazed door with single glazed fanlight window over, radiator, cornice and corbels, fitted coat hooks.

GROUND FLOOR

DINING ROOM

14' 6" x 12' 4" (4.41m x 3.77m)

Double glazed sliding sash window, radiator, living flame gas fire to conglomerate hearth and back panel with pine surround, built in shelving to alcove, cornice, ceiling rose, picture rail.

SITTING ROOM

10' 6" x 10' 6" (3.21m x 3.21m)

Double glazed sliding sash window, radiator, built in cupboards and shelving to alcove, cornice, ceiling rose, exposed floorboards.

KITCHEN

16' 12" x 6' 2" (5.18m x 1.87m)

Single glazed door to garden, three double glazed windows, radiator, base and wall units, stainless steel sink, space for cooker with extractor/filter over, integrated fridge, freezer and dishwasher, breakfast bar, tiled splashbacks, tiled flooring.

LANDING 1

6' 5" x 2' 8" (1.96m x 0.81m)

BASEMENT

SHOWER ROOM WITH UTILITY SPACE

13' 3" x 13' 2" (4.05m x 4.01m)

Double glazed window, radiator, W.C., wash hand basin to vanity, fully panelled shower cubicle with electric shower fitment, plumbing for washing machine.





SECOND FLOOR

LANDING 2

BEDROOM

11' 7" x 7' 1" (3.53m x 2.17m)

Double glazed sliding sash window, radiator, picture rail.

BEDROOM

10' 3" x 10' 1" (3.12m x 3.08m)

Double glazed sliding sash window, radiator, picture rail.

FIRST FLOOR

BATHROOM

8' 8" x 7' 3" (2.63m x 2.21m)

Double glazed sliding sash window, radiator, three piece suite in white comprises W.C., wash hand basin and bath with mixer shower, partial tiling to walls.

BEDROOM

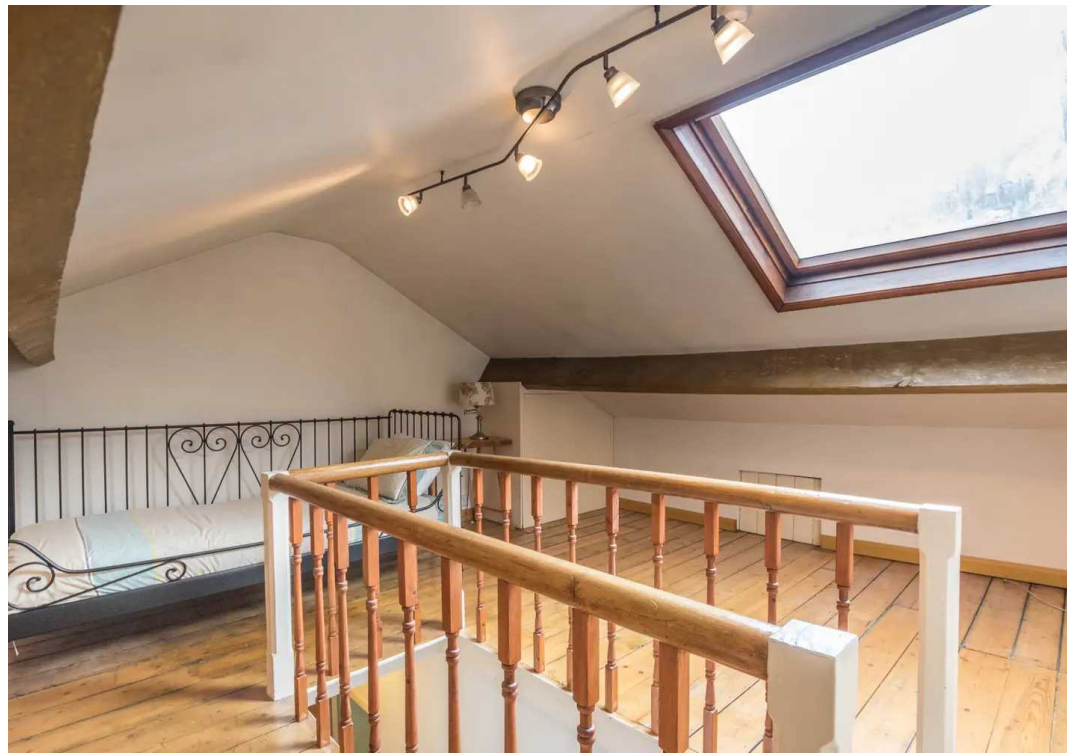
16' 12" x 6' 2" (5.18m x 1.87m)

Three double glazed windows, radiator, wash hand basin to vanity, built in cupboard housing gas central heating boiler.

BEDROOM

Double glazed window, radiator, exposed floorboards.





OUTSIDE

There is a patio garden at the rear. On road parking applies.



SERVICES

Mains electricity, mains gas, mains water, mains drainage.

EPC Rating D

Council tax band: C

Tenure: Freehold

DIRECTIONS

From Kendal town centre follow Windermere Road to the traffic lights turning right onto Burneside Road where number 11 is located on the right.

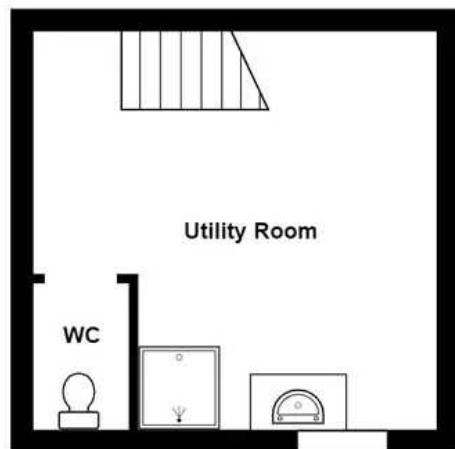
WHAT3WORDS: odds.locked.zebra



11 Burneside Road, Kendal

Total Area: 128.7 m² ... 1385 ft²

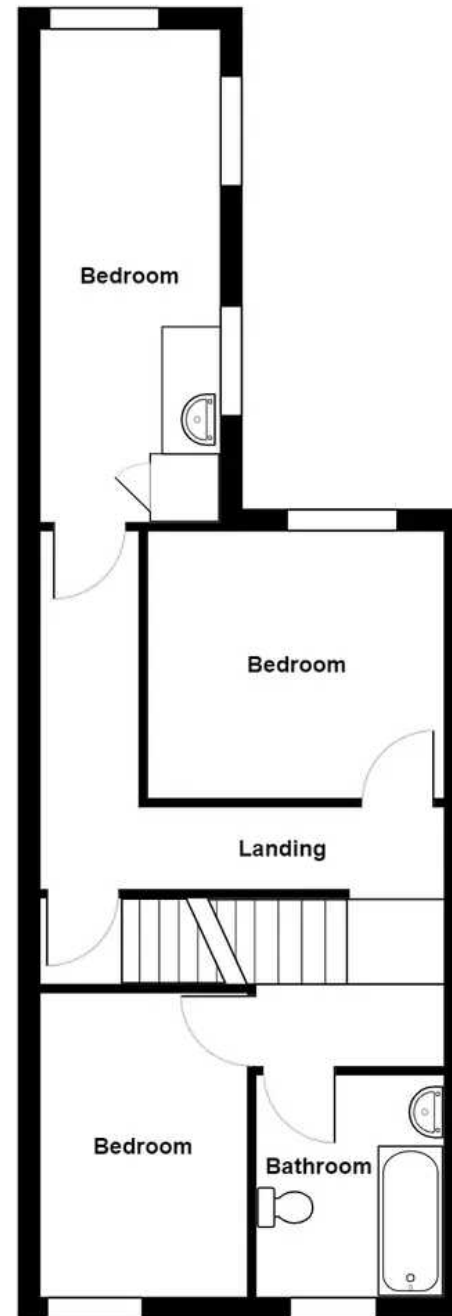
For illustrative purposes only - not to scale.
The position and size of features are approximate only.
© North West Inspector.



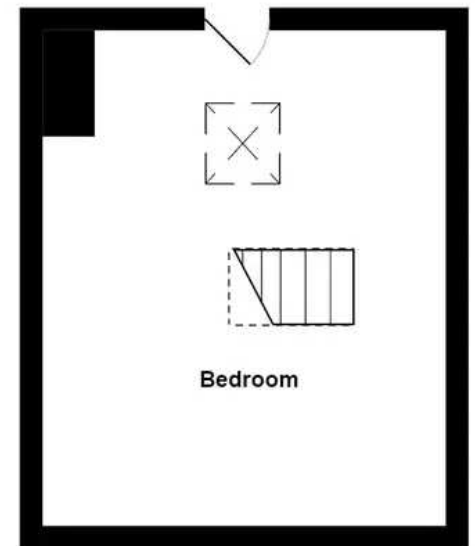
Basement



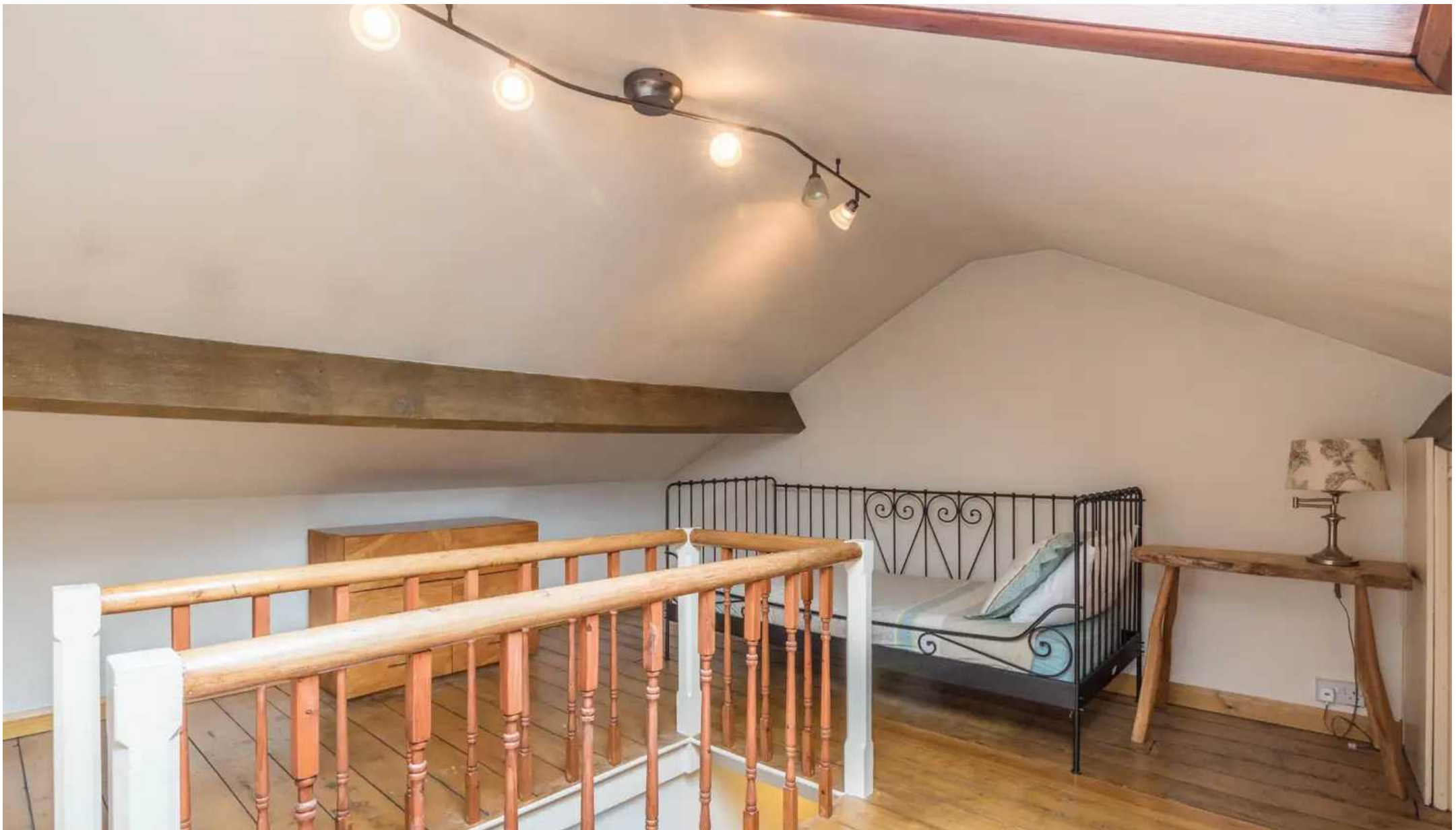
Ground Floor



First Floor



Second Floor



THW Estate Agents

112 Stricklandgate, Kendal - LA9 4PU

01539 815700 • kendal@thwestateagents.co.uk • www.thwestateagents.co.uk



Your Local Estate Agents **Thomson Hayton Winkley**