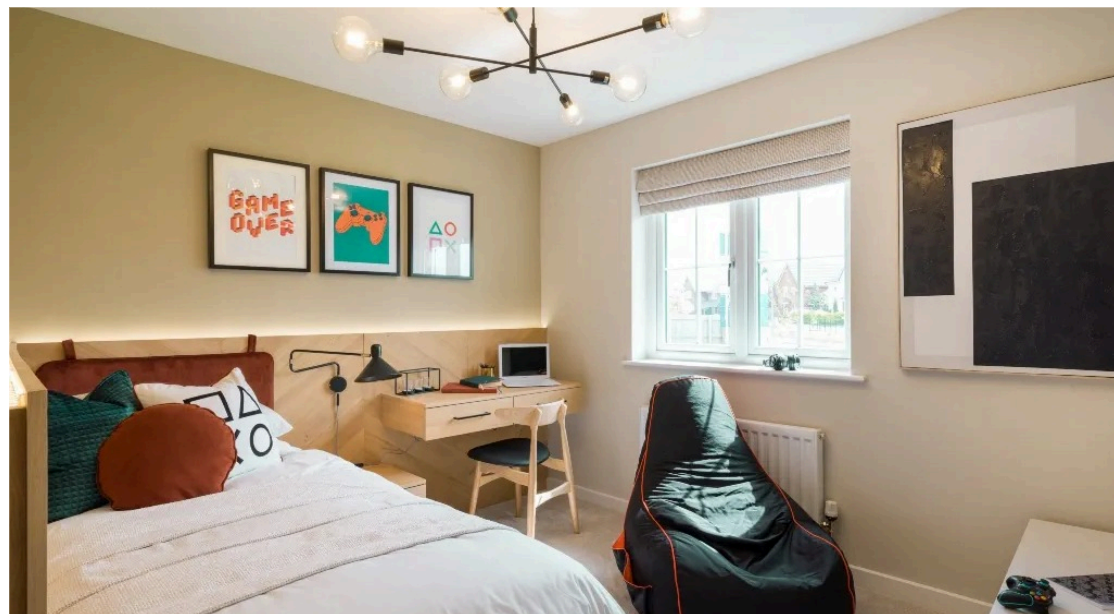
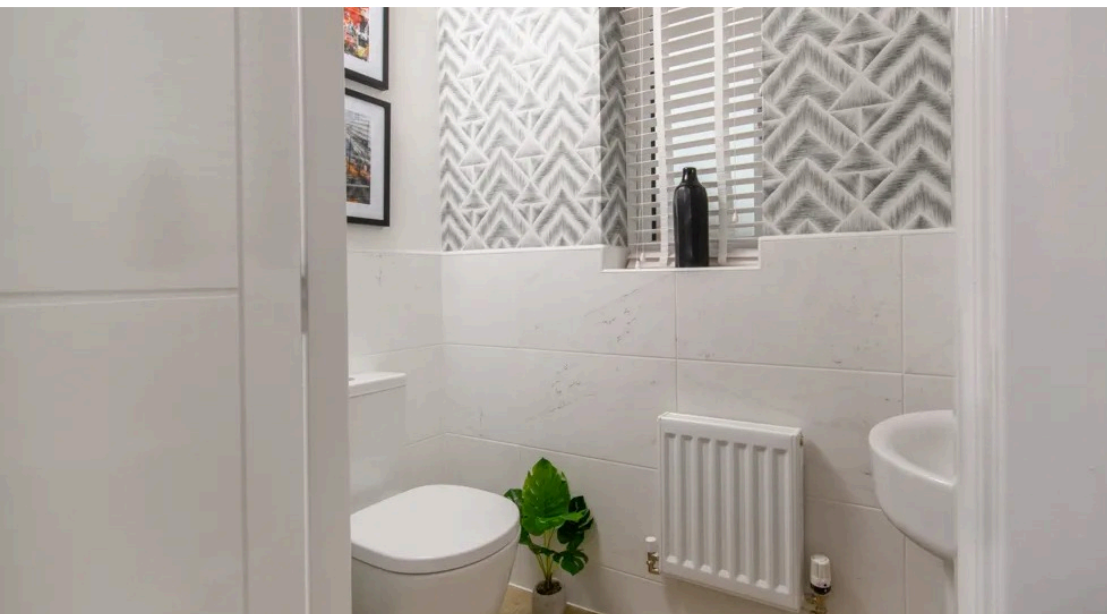




 4
Bedrooms

 4
Bathrooms





**** MILLER HOMES WILL PAY 5% OF £25,500 TOWARDS THE DEPOSIT ****

**** COMES WITH TWO PARKING SPACES ****

**** YET TO BE BUILT, COMPLETION IN DECEMBER / JANUARY ****

Introducing this luxurious and modern townhouse nestled in a conveniently accessible location. This yet to be built gem offers a seamless blend of contemporary design and functionality.

You have your own chance to personalise your own new home, from picking your own kitchen to choosing the tiles in your bathroom. Don't miss this opportunity to customise this dream townhouse and make it your own urban haven!

Boasting an open concept layout, the ground floor will feature a gourmet kitchen with state of the art appliances, overlooking a spacious living and dining area, perfect for entertaining. Additionally, a ground floor W/C offering ease to all the family.

To the first floor, you will find the main family bathroom providing comfort and flexibility for family members and guests. You will also be greeted with two spacious bedrooms with large windows flooding the space with natural light.

Finally, to the second floor you are met with the master bedroom benefiting from fitted wardrobes and the final bedroom. Both completed with their own en-suite and ample space throughout.

This townhouse will showcase high end finishes and energy efficient features ensuring a harmonious blend of style and sustainability. Its proximity to local amenities, parks and public transport ensures a lifestyle of convenience.

Kitchen *5.27m x 4.37m*

Fitted appliances. Space for utilities. Bi-folded doors.

Living room *2.95m x 3.70m*

TV point. UPVC double glazed windows.

W/C *0.9m x 3.7m*

Toilet. Wash basin.

Bedroom 1 *5.27m x 2.8m*

Fitted wardrobe. UPVC double glazed window.

Ensuite *1.7m x 2.24m*

Rainhead shower. Part tiled part wet wall. Wash basin. Toilet

Bedroom 2 *5.27m x 2.81m*

UPVC double glazed window.

Ensuite *1.3m x 2.24m*

Rainhead shower. Part tiled part wet wall. Wash basin. Toilet

Bedroom 3 *5.27m x 2.84m*

UPVC double glazed window.

Bedroom 4 *5.27m x 3.16m*

UPVC double glazed window.

Bathroom *3.16m x 1.89m*

Fully tiled. Toilet. Wash basin. Bath with shower overhead.

