



122 Towngate, Ecclestone

PR7 5QS

£725 pcm



Stunning first floor flat to let with fully fitted kitchen, stylish bathroom, plenty of living space and designated parking.

The private entrance has tiled flooring and carpeted stairs leading to the first floor accommodation. There is a spacious lounge which is neutrally decorated with carpeted flooring and French doors leading out to a Juliet balcony which enjoys pleasant views over open farmland to rear. The open plan kitchen has a range of modern cream shaker style wall and base units with integrated oven, hob, microwave, dishwasher, washing machine and fridge freezer. There is a double bedroom which is neutrally decorated and carpeted together with a bathroom which has contemporary tiled flooring and elevations with a modern three piece suite comprising low level wc, wash hand basin and panelled bath with shower over and a chrome ladder heated towel rail.



Carpeted stairs lead to the second storey where the Master Bedroom is a generous double, neutrally decorated and carpeted with velux windows to the front and rear with under eaves storage, and an en suite shower room with tiled flooring and elevations with low level wc, wall mounted basin and shower enclosure.

Stunning first floor flat to let with fully fitted kitchen, stylish bathroom, plenty of living space and designated parking.

Deposit: £835.00

Holding Deposit: £165.00

Council Tax Band: A

EPC Rating: C

- First floor modern flat
- Dedicated parking space
- Master suite on top floor
- Fully fitted kitchen
- Beautiful views to the rear
- Available from September



Eccleston Branch

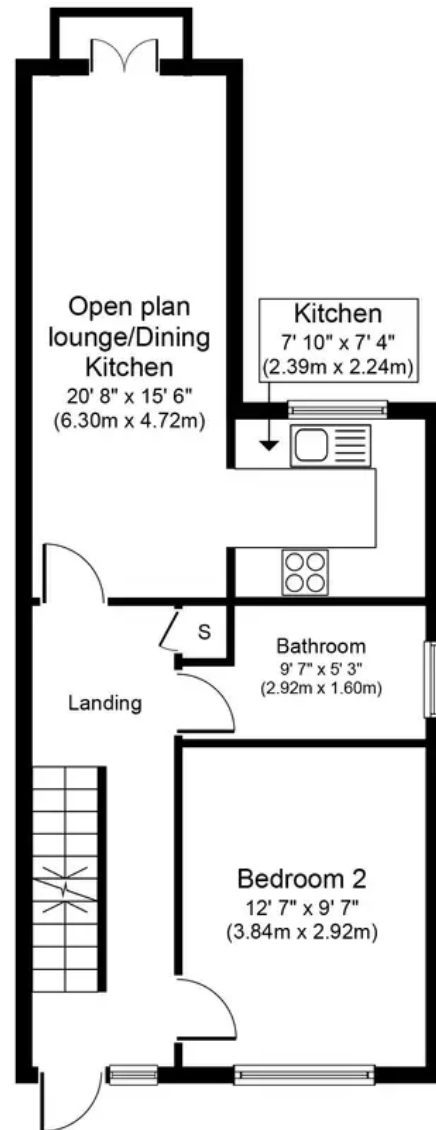
265 The Green, Eccleston, PR7 5TF
01257 451673

Coppull Branch

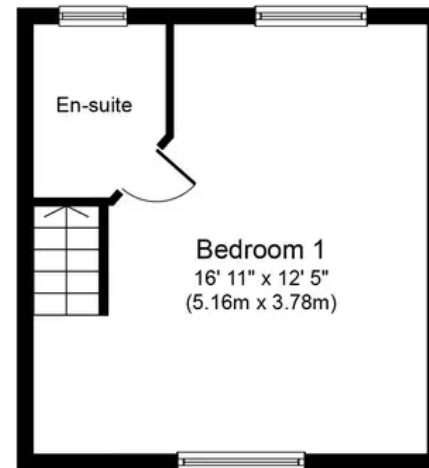
244 Spendmore Lane, Coppull, PR7 5DE
01257 794588

www.hometruthslancs.co.uk
office@hometruthslancs.co.uk





First Floor
Approximate Floor Area
499 sq. ft.
(46.4 sq. m.)



Second Floor
Approximate Floor Area
263 sq. ft.
(24.4 sq. m.)

Whilst every attempt has been made to ensure the accuracy of the floor plan contained here, measurements of doors, windows, rooms and any other items are approximate and no responsibility is taken for any error, omission, or mis-statement. This plan is for illustrative purposes only and should be used as such by any prospective purchaser or tenant. The services, systems and appliances shown have not been tested and no guarantee as to their operability or efficiency can be given.