



## Mills Bakery, 4 Royal William Yard, Plymouth, PL1 3GD

In Excess of £350,000 LEASEHOLD





## Mills Bakery

4 Royal William Yard, Plymouth

Stunning 2-bed apartment across two floors in a Grade 1 listed building. Perfectly situated in the heart of Royal William Yard, offering beautiful views, great amenities, and a vibrant community. Spacious and bright with a fully fitted kitchen, large living room, and mezzanine bedroom.





# Mills Bakery

## 4 Royal William Yard, Plymouth

Upon entering the apartment you have a slightly elevated and fully fitted kitchen which lends itself to entertaining to the right hand side with an additional storage area, to your left the bathroom and second bedroom, walking through to the large and bright living room, you are drawn to the windows and the views out over the moored boats in the inner basin.

A flight of stairs lead you up to the mezzanine bedroom with its own bath. In addition the property offers a separate W.C and yet more useful storage which can also be used as a dressing room if required.

In conclusion, this 2-bedroom apartment presents an exceptional opportunity for discerning buyers looking to live in style amidst the bustling cityscape. With its contemporary design, superior finishes, and stunning outside space, this property offers a harmonious blend of comfort, luxury, and convenience. Don't miss your chance to call this remarkable apartment your own. Schedule a viewing today and experience the epitome of urban waterside living.



## Tenure & Services

Tenure: Leasehold

Lease Length: TBC

Service Charge: £450 pcm

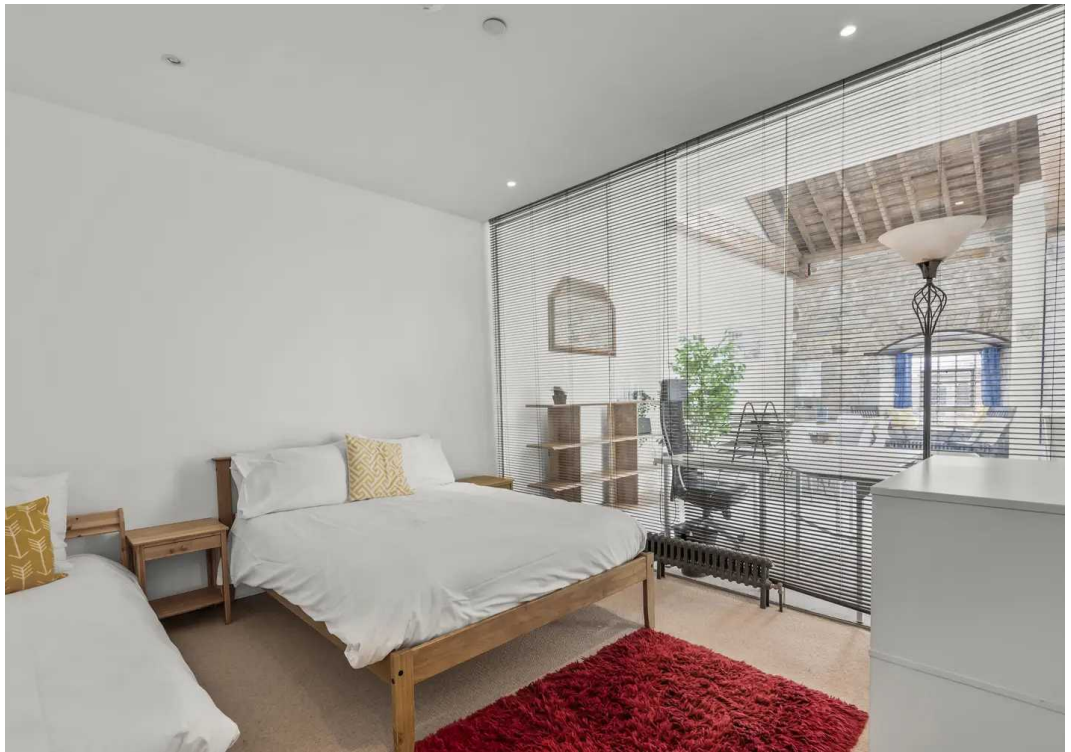
Ground Rent: £400 per annum

EPC: Exempt

Council Tax band: C











## Atwell Martin

Atwell Martin, 65 Southside Street – PL1 2LA

01752 202121

[plymouthsales@atwell-martin.co.uk](mailto:plymouthsales@atwell-martin.co.uk)

[plymouth.atwellmartin.co.uk/](http://plymouth.atwellmartin.co.uk/)

Atwell Martin Plymouth endeavour to ensure the accuracy of property details produced and displayed. Please note that we have not tested any apparatus, equipment, fixtures, fittings or services and so cannot verify that they are connected, in working order or fit for purpose. It is imperative that the buyer of any property makes such checks, prior to purchase so as to satisfy themselves of the properties suitability for their purchase. .