



**LAWRENCE RAND**

**69 Lea Crescent, Ruislip**  
**£639,950**





## 69 Lea Crescent

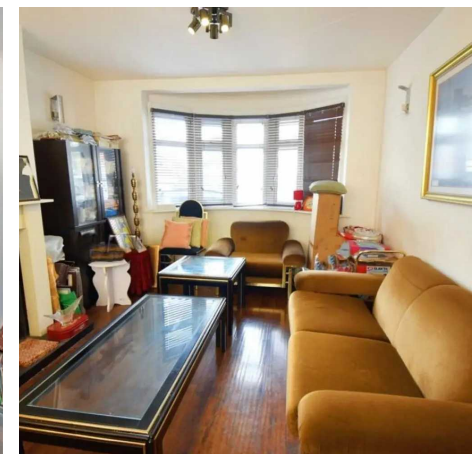
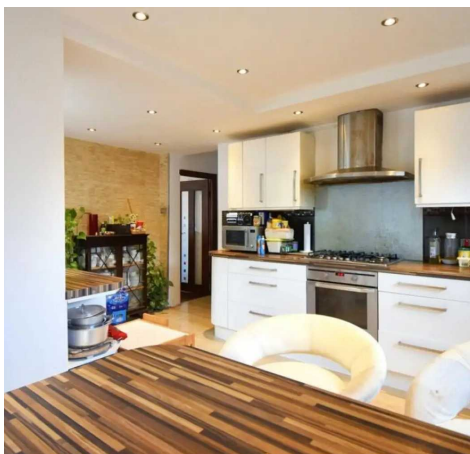
Ruislip, Ruislip

This well-proportioned four bedroom, two bathroom extended semi-detached house offers good size living accommodation, ample driveway parking, good size garden and is located in a popular road close to shops, amenities and transport links.

Council Tax band: E

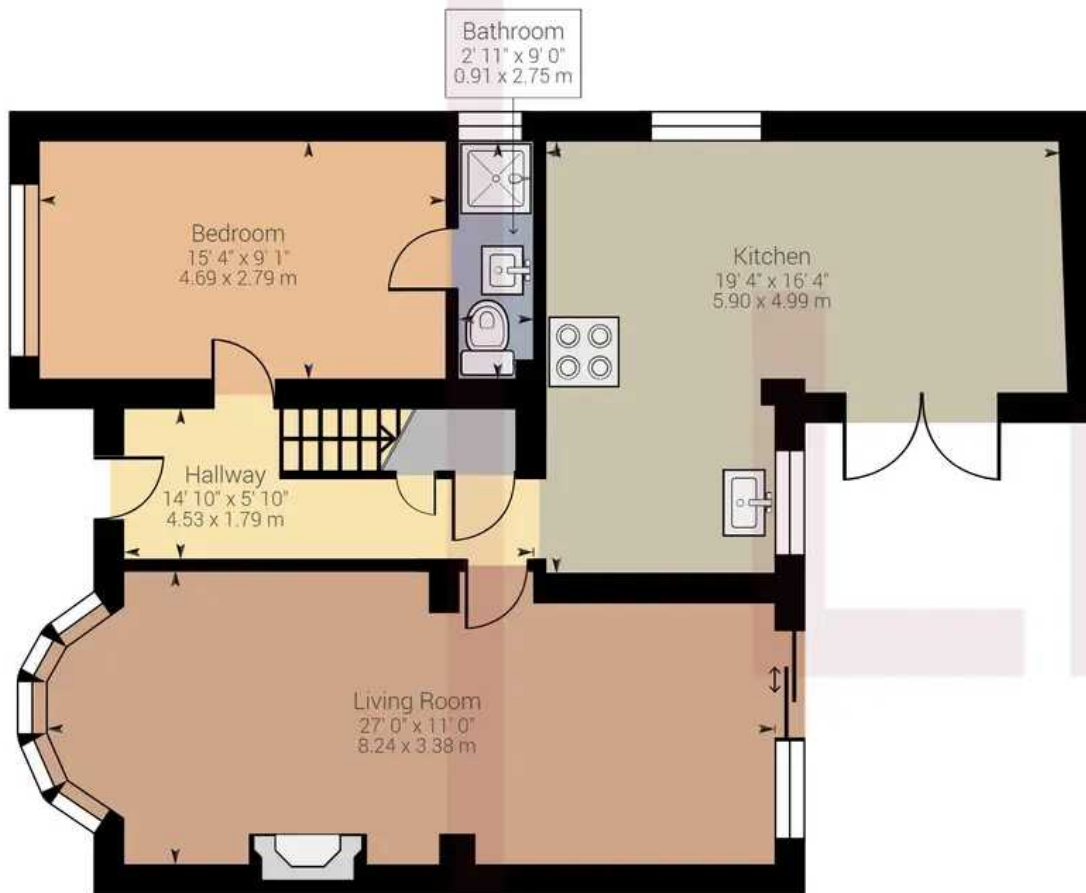
Tenure: Freehold

- Extended end terrace
- Three first floor bedrooms
- Ground floor 4th bedroom
- Family bathroom
- Downstairs shower room
- Modern Kitchen/Diner
- Good size reception rooms
- Off street parking

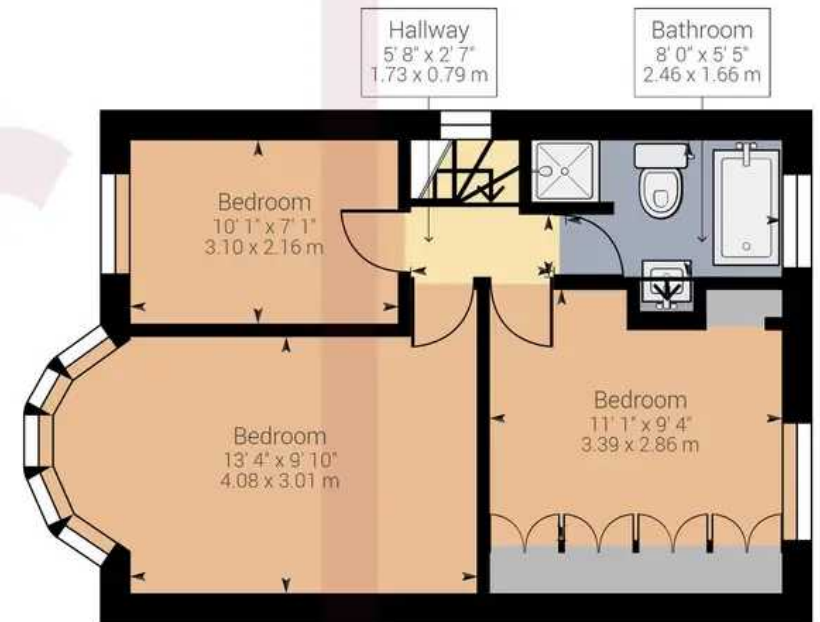








Ground Floor



1st Floor

While every attempt has been made to ensure accuracy, all measurements are approximate, not to scale. This floor plan is for illustrative purpose only and should be used as such by any prospective tenant or purchaser.







## Lawrence Rand

Lawrence Rand, 106 Victoria Road - HA4 0AL

01895 632211

[Info@lawrence-rand.co.uk](mailto:Info@lawrence-rand.co.uk)

[www.lawrence-rand.co.uk/](http://www.lawrence-rand.co.uk/)



**LAWRENCE RAND**