



3

Bedrooms

1

Bathroom



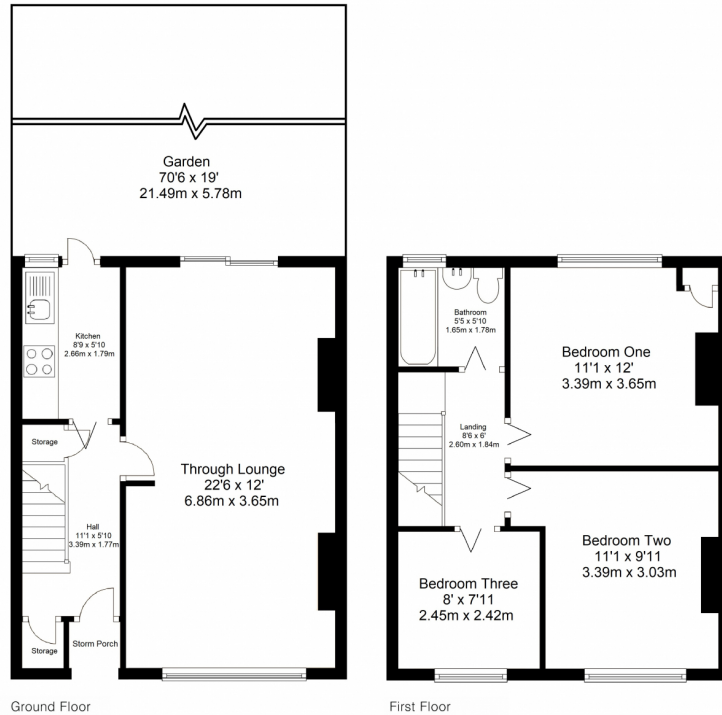




Addison Townsend are delighted to offer this three bedroom mid terrace house which comprises of a through lounge, fitted kitchen, first floor bathroom, and 70ft rear garden. Priors Croft is a fantastic location in Walthamstow within close proximity to Blackhorse Road (Victoria Line ? Zone 3). Walthamstow Central Tube Station and numerous other local transportation links are also within easy reach. It is the perfect family friendly place to live and provides great local amenities and transport links to the city. You have the famous Lloyds Park within the grounds of the William Morris gallery and the open spaces are great for the children. The property offers great potential for extension to the ground floor, is sold with no onward chain and is an ideal purchase for first time buyers.



Approximate Gross Internal Area 824.7 sq ft - 76.7 sq m  
Ground Floor Area 421.4 sq ft - 39.2 sq m  
First Floor Area 403.3 sq ft - 37.5 sq m



Although Pink Plan Ltd ensures the highest level of accuracy, measurements of doors, windows and rooms are approximate and no responsibility is taken for error, omission or misstatement. These plans are for representation purposes only as defined by RICS code of measuring practice. No guarantee is given on total square footage of the property within this plan. The figure icon is for initial guidance only and should not be relied on as a basis of valuation.

