



Flat 1, 33 Notte Street, Plymouth

In Excess of £130,000





Flat 1

33 Notte Street, Plymouth

Large first floor apartment in the heart of the city centre, with a wonderful open plan lounge/kitchen/dining room and a wet room. Located within wal...

- Lift Access
- First Floor Apartment
- Central Location in Plymouth City Centre
- Ample Storage Space
- Large Double Bedroom
- Superb Open Plan Living Space
- Grade II Listed
- Dual Aspect Sash Windows
- Additional External Storage Cupboard



Flat 1

33 Notte Street, Plymouth

Large first floor apartment in the heart of the city centre, with a wonderful open plan lounge/kitchen/dining room and a wet room. Located within walking distance to Plymouth Barbican, Hoe and moments away from the City Centre. Viewing highly advised. No Onward Chain.

TENURE & SERVICES

Tenure – Leasehold Lease Length – 108 Years Service Charge & Ground Rent – £1281.74 & £50.00 Approx
EPC – Exempt Grade II Listed Council Tax Band – B



THE PROPERTY

Located on the first floor, you enter the property into the hallway. The hallway has two storage cupboards, one which houses the boiler, and gives access to the bedroom, wet room and open plan living space. There is a large sash window to the side elevation. The open plan living space is a wonderful size and has dual aspect windows to the side and rear elevation. There is a fitted kitchen at the rear, with ample space for a dining table and lounge furniture. There is also space for a workstation. The kitchen has a range of wall and base mounted units, complete with a work surface over. There is space for a range of white goods, with the added benefit of an integral double oven with a hob over and an extraction hood over. The bedroom has a large sash window to the front elevation and space for a walk in wardrobe. The bedroom is neutrally decorated and is a good size. The wet room has a walk in shower, with a low level w/c and a hand wash basin to finish.

SUMMARY

Large first floor apartment in the heart of the city centre, with a wonderful open plan lounge/kitchen/dining room and a wet room. Located within walking distance to Plymouth Barbican, Hoe and moments away from the City Centre. Viewing highly advised. No Onward Chain.

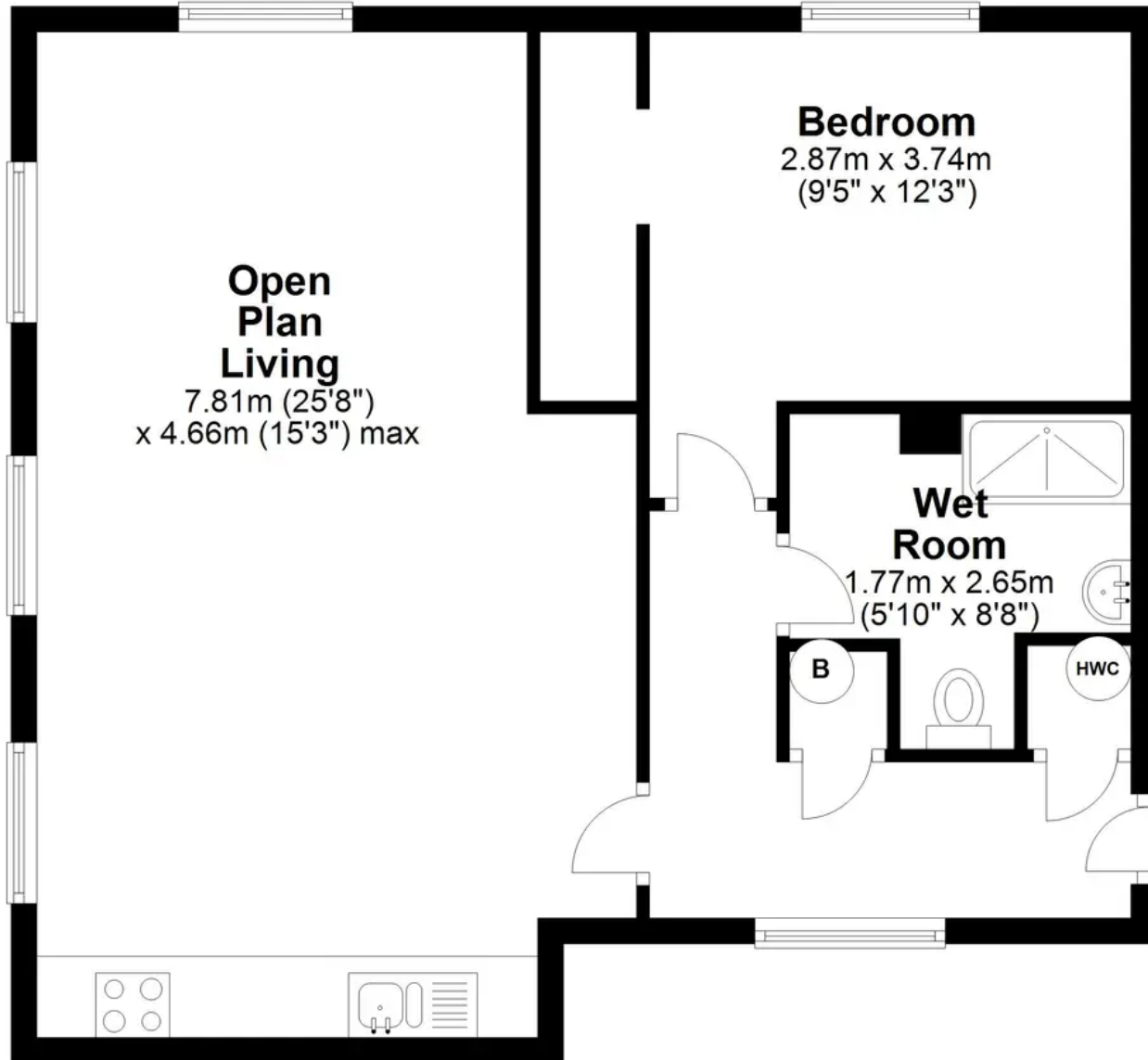
LOCATION

Berkeley Square is a Grade II listed building located on Notte Street, in the heart of Plymouth City and on the doorstep of Plymouth's Historic Barbican. Berkley square has an internal lift giving access to all floors and is well maintained throughout. The Barbican is home to the famous Plymouth Mayflower steps, plus a wide variety of local restaurants and traders. The world famous Plymouth Hoe is a short walk away from Berkeley Square, and has wonderful panoramic views over Plymouth Sound. Plymouth is also home to the Royal William Yard, plus Drake Circus shopping complex. There is access to Cornwall via the A38 Devon Expressway and Torpoint Ferry crossing, and up to North Devon via the A38 Devon Expressway.



First Floor

Approx. 62.3 sq. metres (670.9 sq. feet)



Total area: approx. 62.3 sq. metres (670.9 sq. feet)

Berkeley Square, Notte Street, Plymouth



Atwell Martin

Atwell Martin, 65 Southside Street - PL1 2LA

01752 202121

plymouthsales@atwell-martin.co.uk

plymouth.atwellmartin.co.uk/

Atwell Martin Plymouth endeavour to ensure the accuracy of property details produced and displayed. Please note that we have not tested any apparatus, equipment, fixtures, fittings or services and so cannot verify that they are connected, in working order or fit for purpose. It is imperative that the buyer of any property makes such checks, prior to purchase so as to satisfy themselves of the properties suitability for their purchase. .