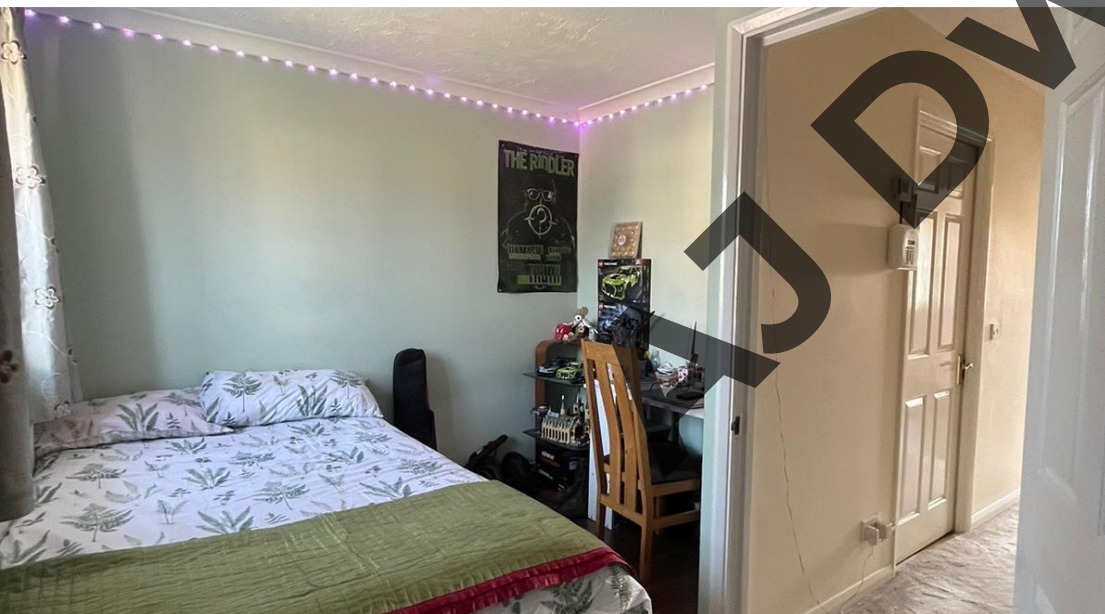




 **3**
Bedrooms

 **2**
Bathrooms



Immaculate recently refurbished 3-bedroom town house situated in a quiet cul-de-sac on the popular St. Leonard's Hamlet Development - Henderson Close, RM11

This 2-storey house offers a spacious lounge/diner with double glazed French doors leading into a conservatory and a well-maintained garden. A fully equipped tiled kitchen and WC/utility room on the ground floor. Master bedroom, small-double bedroom and a family bathroom on the first floor. Another master bedroom with en-suite on the second floor.

Additionally, the property benefits from lots of natural light leading into the property, a side entrance, double glazing throughout, central heating, lots of storage spaces, wood effect flooring, on street parking and a drive for 2 cars.

Room Measurements:

Lounge/Diner - 17'7 x 12'8

Kitchen - 10'7 x 5'9

W/C / Utility Room - 7'4 x 3'

Conservatory - 12'7 x 12'5

First Floor Master Bedroom - 13'2 x 11'5

Small-Double Bedroom - 12'9 x 9'3

Family Bathroom - 7'2 x 6'3

Second Floor Master Bedroom - 12'8 x 11'1

En-suite - 8'7 x 6'9

Garden - 42' approx.

Property is less than 10 minutes' drive from Hornchurch Underground Station (District Line) & Hornchurch High Street where you will find all the shopping facilities you need including Shopping Centre, cinema and access to restaurants and leisure facilities.

Additional Information:

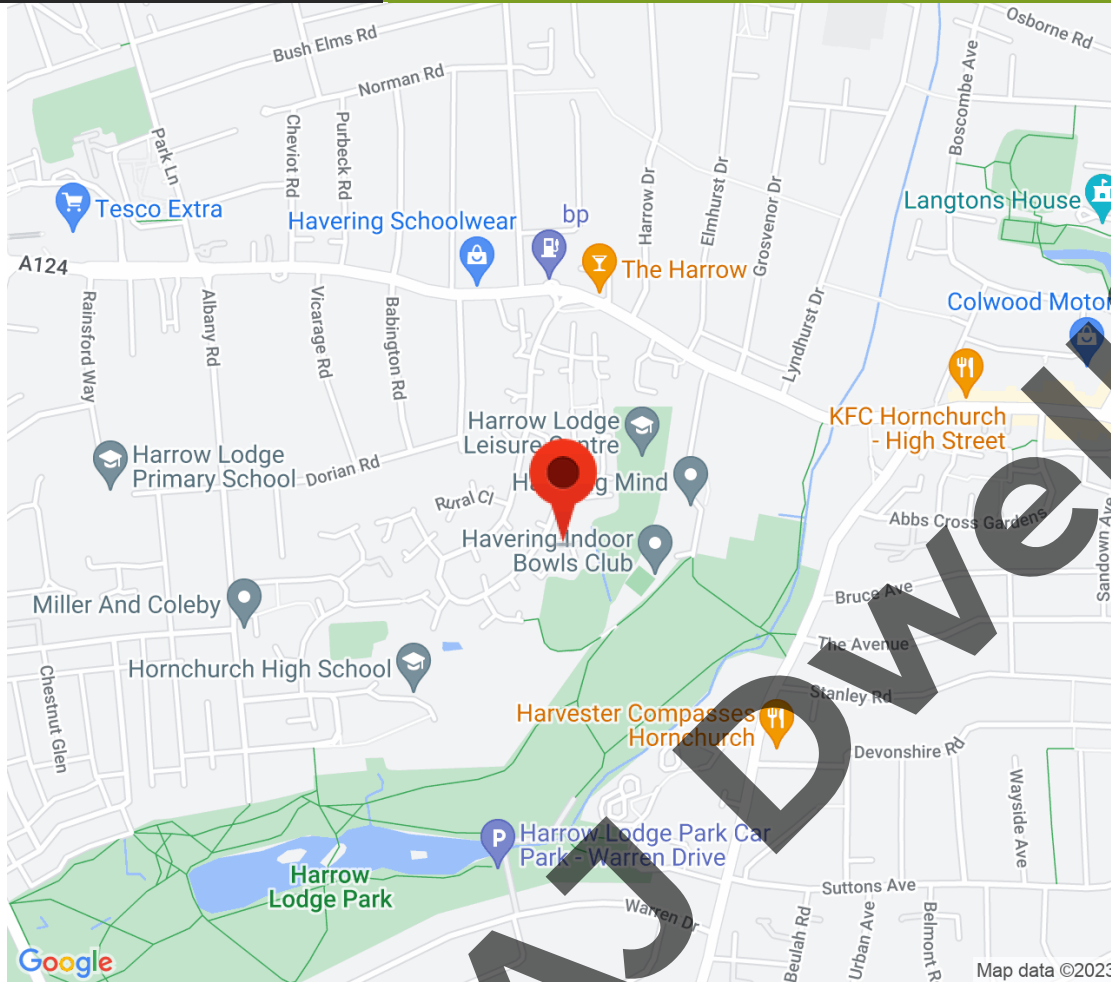
Local Authority - London Borough of Havering,

Council tax band - D

Tenure - FREEHOLD

Guide Price: £475k - £525k

AJ dwellings Estate Agents also offer a professional, Lettings and Management Service. If you are considering renting your property or looking at buying or selling then please call on the number shown above.



Energy Efficiency Rating		Current	Potential
Very energy efficient - lower running costs			
(92+)	A		
(81-91)	B		85
(69-80)	C	70	
(55-68)	D		
(39-54)	E		
(21-38)	F		
(1-20)	G		
Not energy efficient - higher running costs			
England, Scotland & Wales			EU Directive 2002/91/EC

Address: hornchurch, Rm11

