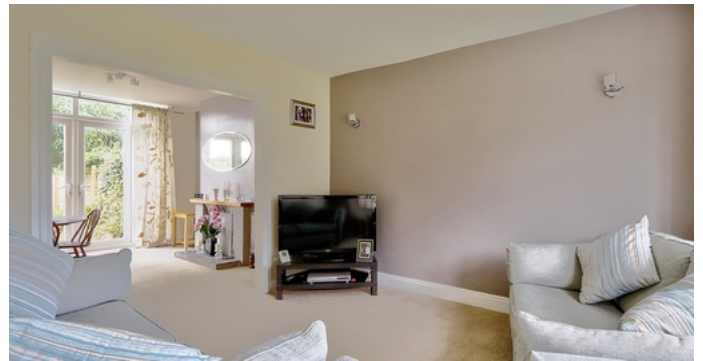




G.R.
Estates
unlock your happiness






Guisborough Road, TS7



- ✓ Traditional, Three Bed, Double Bay Fronted Property... A Beautiful Family Home
- ✓ Positioned In A Popular Nunthorpe Location , Just A Stones Throw From Fantastic Schooling Such As Nunthorpe Primary & Secondary School
- ✓ Brand New, Stunning, Shaker Style Fitted Kitchen... Fit In February 2023 And Appliances Unused
- ✓ With Extra Large Gardens To The Front And Rear, Double Driveway & Garage
- ✓ Upvc Double Glazing Throughout And Gas Central Heating With Combi Boiler

Offers Over **£195,000**

Bedroom  3 Bathroom  1 Reception  2