



## 22 Partington Lane, Swinton

£199,995 Leasehold

Off road parking • Three Receptions • Fully fitted kitchen • Great transport for Manchester city centre • Two double bedrooms



This end terrace property would make an ideal home for first time buyers being close to great transport links to Manchester city centre.

Council Tax band: B

Tenure: Leasehold

EPC Energy Efficiency Rating: C

EPC Environmental Impact Rating: E



- › Off road parking
- › Three Receptions
- › Fully fitted kitchen
- › Great transport for Manchester city centre
- › Two double bedrooms



Council Tax band: B

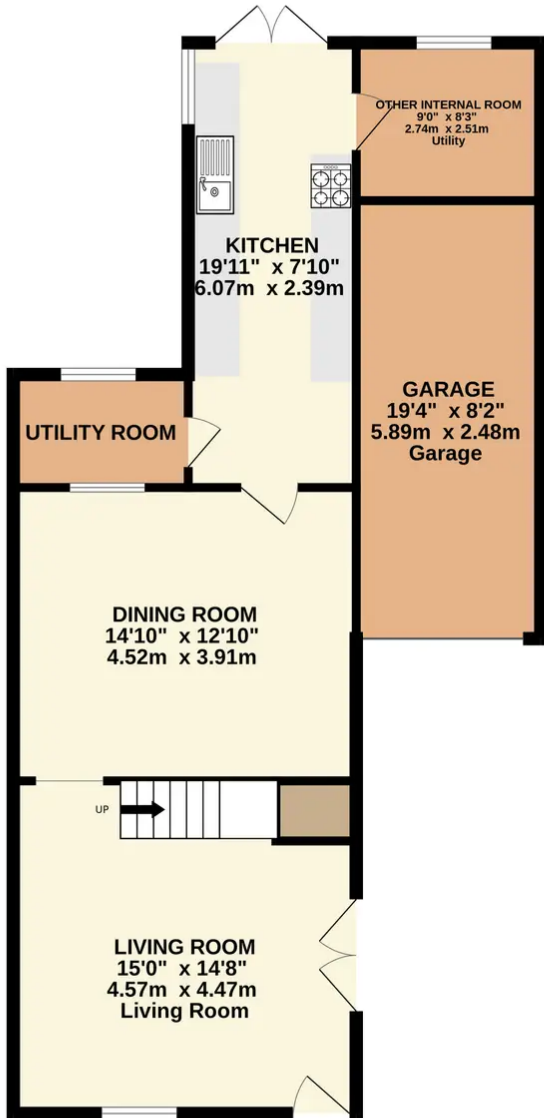
Tenure: Leasehold

EPC Energy Efficiency Rating: C

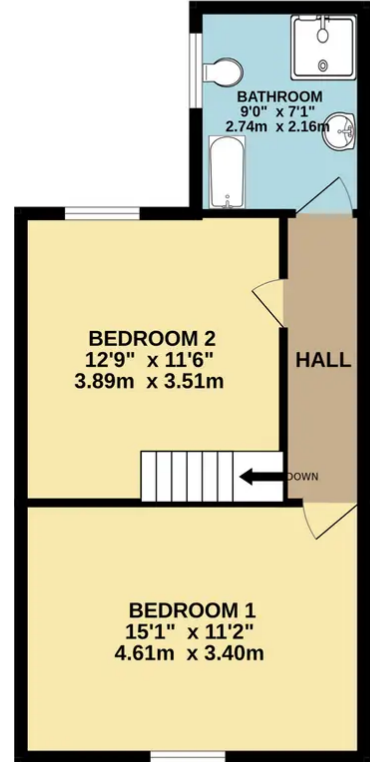
EPC Environmental Impact Rating: E



GROUND FLOOR  
813 sq.ft. (75.5 sq.m.) approx.



1ST FLOOR  
429 sq.ft. (39.8 sq.m.) approx.



TOTAL FLOOR AREA : 1242 sq.ft. (115.4 sq.m.) approx.

Whilst every attempt has been made to ensure the accuracy of the floorplan contained here, measurements of doors, windows, rooms and any other items are approximate and no responsibility is taken for any error, omission or mis-statement. This plan is for illustrative purposes only and should be used as such by any prospective purchaser. The services, systems and appliances shown have not been tested and no guarantee as to their operability or efficiency can be given.  
Made with Metropix ©2023

You can include any text here. The text can be modified upon generating your brochure.