

Gee Lane, Eccles

Manchester



In Excess of £220,000

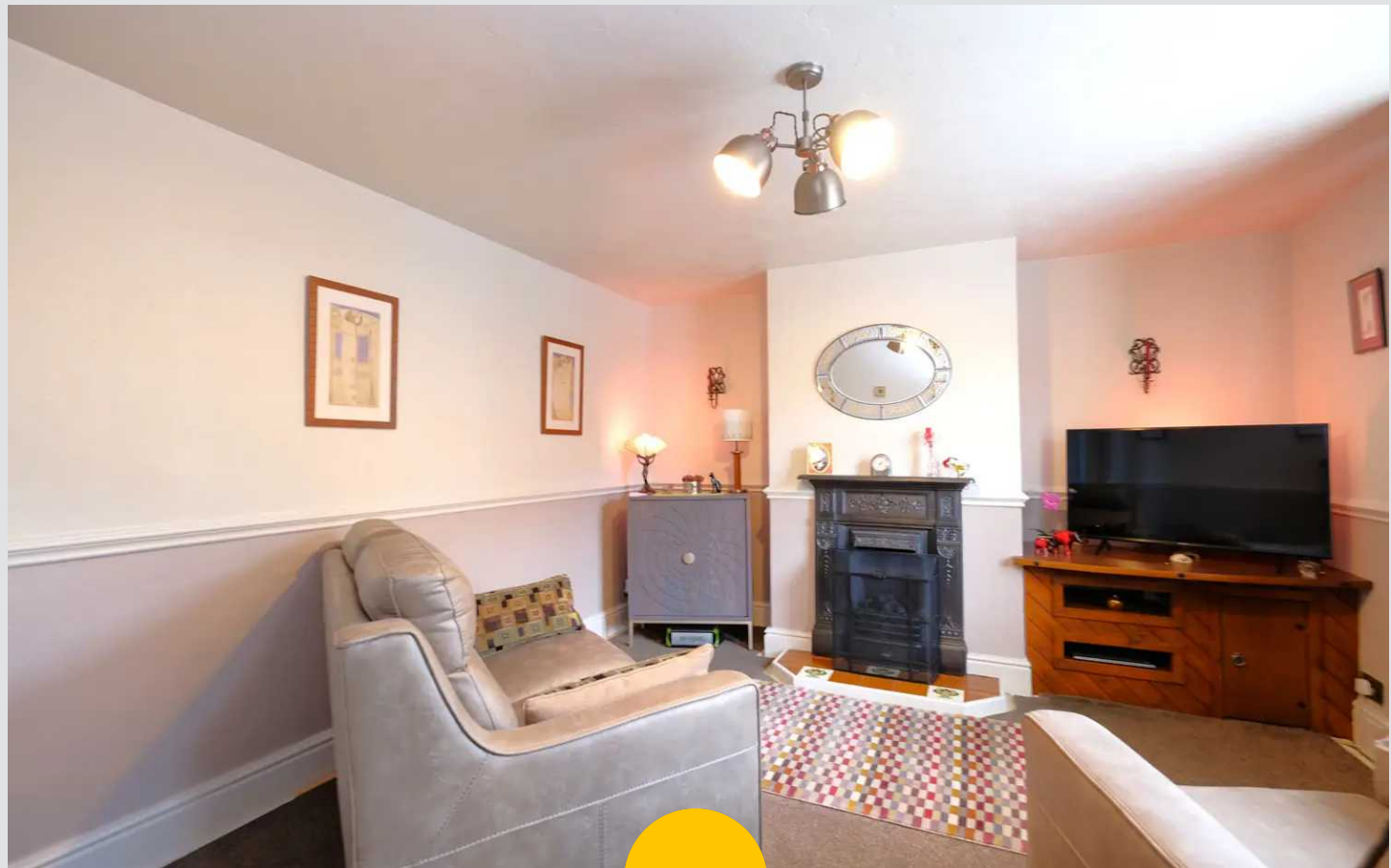
Gee Lane

Eccles, Manchester

Beautiful Georgian cottage located on the desirable Gee Lane within Winton. This eye catching property has undergone renovation over the last five years, making this a perfect home for any first time buyer to unpack and move straight into. With a cosy lounge, modern fitted kitchen and dining area, new installed shower room and two generous bedrooms to the first floor. The property boasts well-kept gardens to both the front and rear. It is excellently positioned close to amenities and transport links. Council Tax band: A

Tenure: Leasehold

- Unique cottage located on the desirable Gee Lane
- Beautifully presented throughout & boasting original features
- Cosy lounge with cast iron fire surround
- Timeless shaker style fitted kitchen & dining area
- Two generous double bedrooms
- Modern fitted shower room downstairs
- Well kept gardens to the front & sun drenched rear
- Surrounded by excellent amenities and transport links



Vestibule

Ceiling light point, composite door, hardwood floor and security alarm.

Lounge

Ceiling light point, double glazed window, wall mounted radiator, cast iron fire with tiled hearth and power points.

Kitchen Diner

13' 8" x 9' 9" (4.17m x 2.97m)

Fitted with a range of wall and base units with complementary work surfaces, integrated oven, grill and hobs and space for free standing fridge freezer. Ceiling light point, two double glazed windows and power points. Leading to a separate area with an integral sink and drainer unit, ceiling light point and double glazed window.

Shower Room

13' 9" x 4' 9" (4.19m x 1.45m)

Fitted with a three piece suite including a hand wash basin and vanity unit, WC and shower. Ceiling light point, double glazed window, airing cupboard and power point. Ceiling spot lights, two double glazed windows and two wall mounted feature radiators.

Bedroom One

14' 0" x 12' 6" (4.27m x 3.81m)

Ceiling light point, double glazed window, wall mounted radiator, fitted storage cupboard and power points.

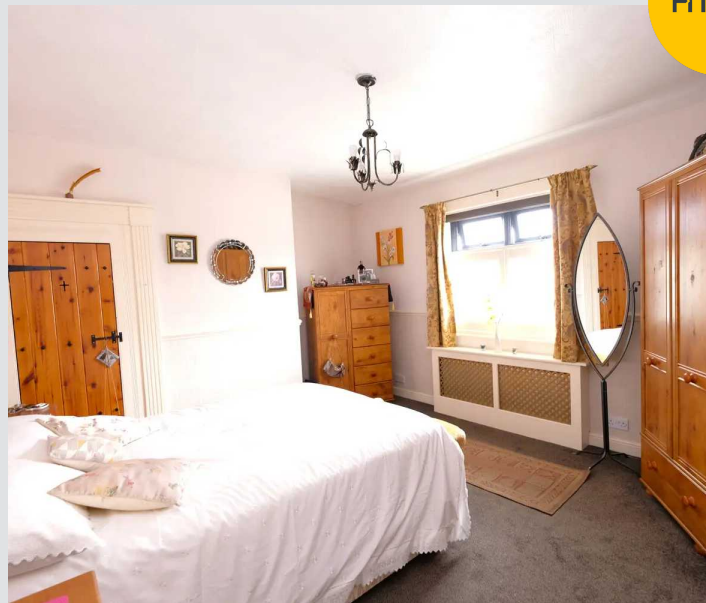
Bedroom Two

11' 7" x 9' 9" (3.53m x 2.97m)

Ceiling light point, double glazed window, storage cupboard, boiler cupboard and power points.

Externally

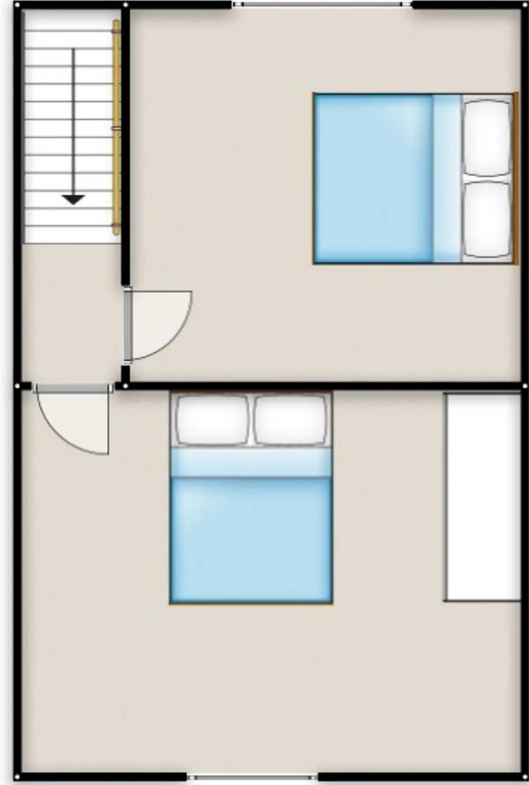
Block paved patio to the rear with central lawn and decorative stone areas.





HILLS







Hills | Salfords Estate Agent

Hills Residential, Sentinel House Albert Street - M30 0SS

0161 707 4900

sales@hills.agency

www.hills.agency/



THE PROPERTY MISDESCRIPTIONS ACT 1991 The Agent has not tested any apparatus, equipment, fixtures and fittings or services and so cannot verify that they are in working order or fit for the purpose. A Buyer is advised to obtain verification from their Solicitor or Surveyor. References to the Tenure of a Property are based on information supplied by the Seller. The Agent has not had sight of the title documents. A Buyer is advised to obtain verification from their Solicitor. You are advised to check the availability of this property before travelling any distance to view. Every effort and precaution has been made to ensure these particulars are correct and not misleading but their accuracy is not guaranteed nor do they form part of any contract. If there is any point which is of particular importance to you, please contact us and we will provide any information you require. This is advisable, particularly if you intend to travel some distance to view the property. The mention of any appliances and services within these details does not imply that they are in full and efficient working order. These particulars are in draft form awaiting Vendors confirmation of their accuracy. These details must therefore be taken as a guide only.