



LAWRENCE RAND

Cardinal Road, Ruislip

£625,000



Cardinal Road

Ruislip, Ruislip

A stunning 4 bedroom chalet bungalow that has been tastefully extended, offering spacious and versatile living accommodation. Benefits include two-bathrooms, air-conditioning, off street parking and separate garage. The property is situated on this popular residential road in close proximity to Eastcote's multiple amenities and schools.

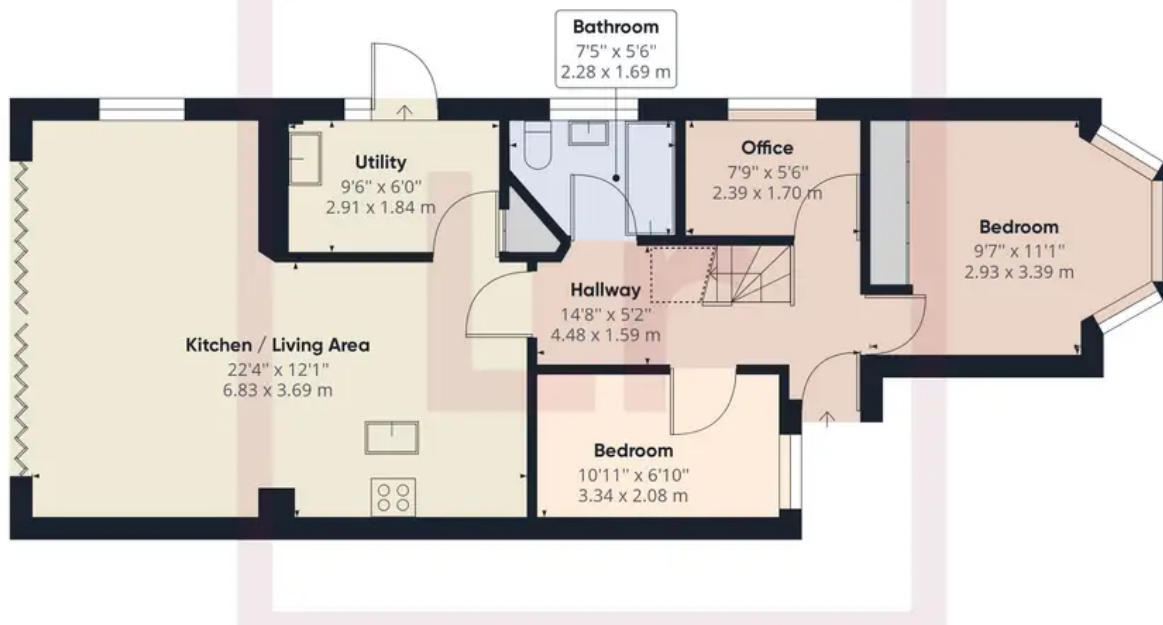
Council Tax band: E

Tenure: Freehold

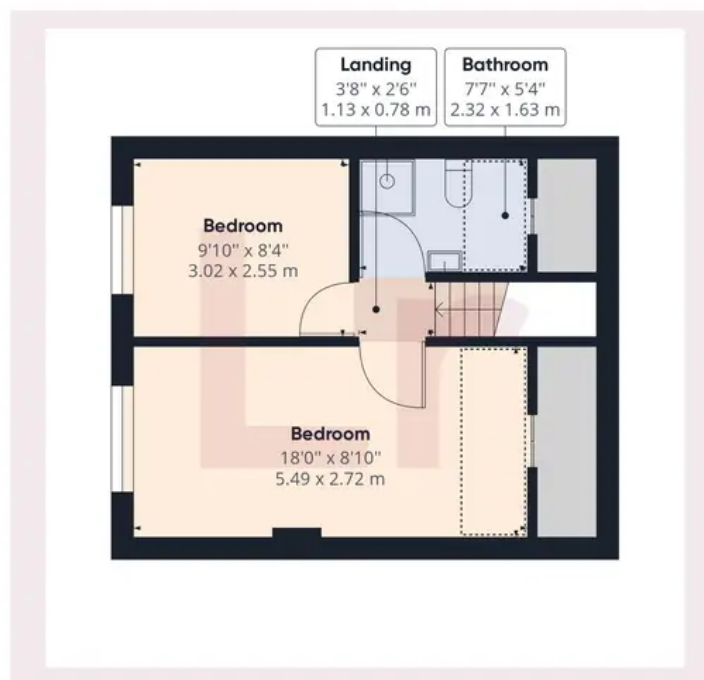
- Extended Bungalow
- Stunning condition
- Four bedrooms
- Two bathrooms
- Utility room
- Open plan living
- Bi-folding doors into garden
- Office / Study







Ground Floor



Floor 1

Approximate total area⁽¹⁾

1123.44 ft²

104.37 m²

Reduced headroom

48.88 ft²

4.54 m²

(1) Excluding balconies and terraces

Reduced headroom (below 1.5m/4.92ft)

While every attempt has been made to ensure accuracy, all measurements are approximate, not to scale. This floor plan is for illustrative purposes only.



Lawrence Rand

Lawrence Rand, 106 Victoria Road - HA4 0AL

01895 632211

Info@lawrence-rand.co.uk

www.lawrence-rand.co.uk/



LAWRENCE RAND