



**LAWRENCE RAND**

**The Heights, Northolt**

Guide Price **£500,000**



## The Heights

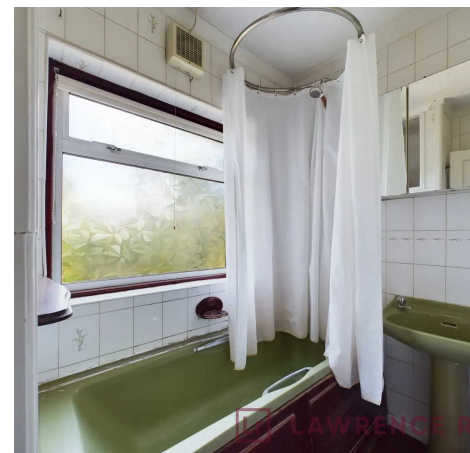
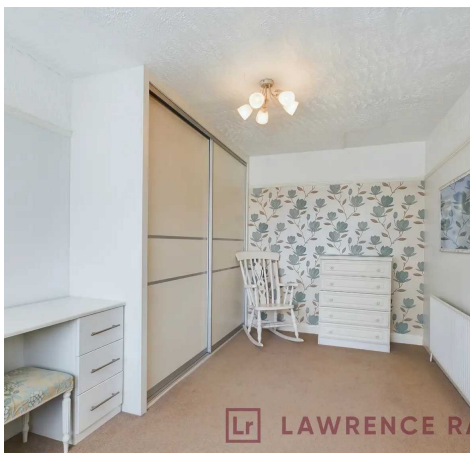
Northolt, Northolt

A corner-plot three-bedroom semi-detached house with potential to improve and extend.

Council Tax band: D

Tenure: Freehold

- Semi-detached House
- Corner Plot
- Three Bedrooms
- Two Receptions
- Family Bathroom
- Generous Garden
- Requires Updating
- Potential to Extend (stpp)





Lr LAWRENCE RAND



Lr LAWRENCE RAND



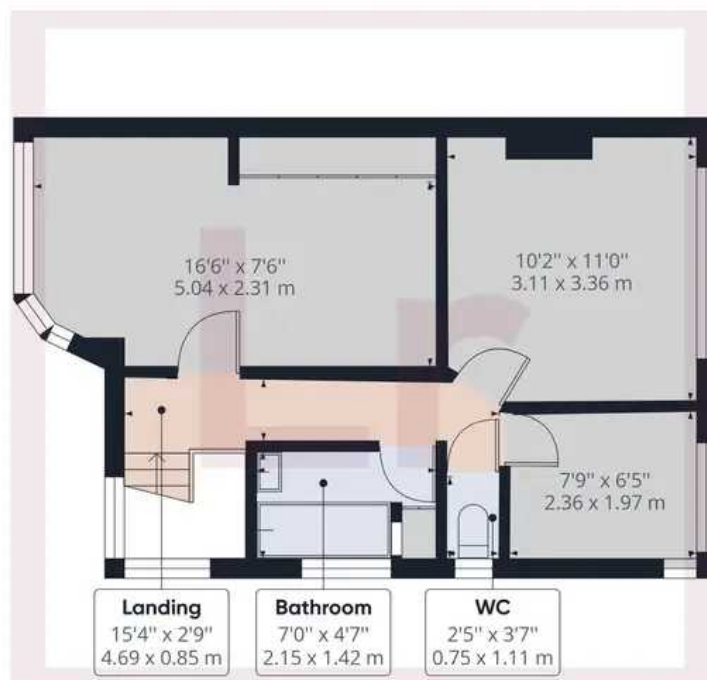
Lr LAWRENCE RAND



Lr LAWRENCE RAND



**Ground Floor**



**Floor 1**

**Approximate total area<sup>(1)</sup>**

833.22 ft<sup>2</sup>

77.41 m<sup>2</sup>

(1) Excluding balconies and terraces.

While every attempt has been made to ensure accuracy, all measurements are approximate, not to scale. This floor plan is for illustrative purposes only.

**GIRAFFE 360**



## Lawrence Rand

Lawrence Rand, 106 Victoria Road - HA4 0AL

01895 632211

[Info@lawrence-rand.co.uk](mailto:Info@lawrence-rand.co.uk)

[www.lawrence-rand.co.uk/](http://www.lawrence-rand.co.uk/)



**LAWRENCE RAND**