



PHILLIPS & STILL

BUCKINGHAM PLACE, BRIGHTON
GUIDE PRICE £175,000 - £200,000





Welcome to this second floor converted flat, boasting a comfortable layout. The flat comprises of one double bedroom, providing ample space for relaxation and privacy. The open plan living area creates a seamless flow between the kitchen, dining, and living spaces, making it perfect for entertaining guests or enjoying quality time with loved ones.

One of the standout features of this property is that it is chain free, allowing for a smooth and hassle-free purchase. Additionally, its prime location in close proximity to Brighton station offers the convenience of easy access to transportation, making commuting a breeze.

Whether you are an astute investor looking for a lucrative buy-to-let opportunity or a first-time buyer seeking your ideal home, this flat is a fantastic choice. Don't miss out on the chance to own a property in such a desirable location. Arrange a viewing today and envision the possibilities of making this flat your own.

SECOND FLOOR

ENTRANCE HALL

SITTING ROOM/KITCHEN

13' 10" x 12' 10" (4.22m x 3.91m)

BEDROOM

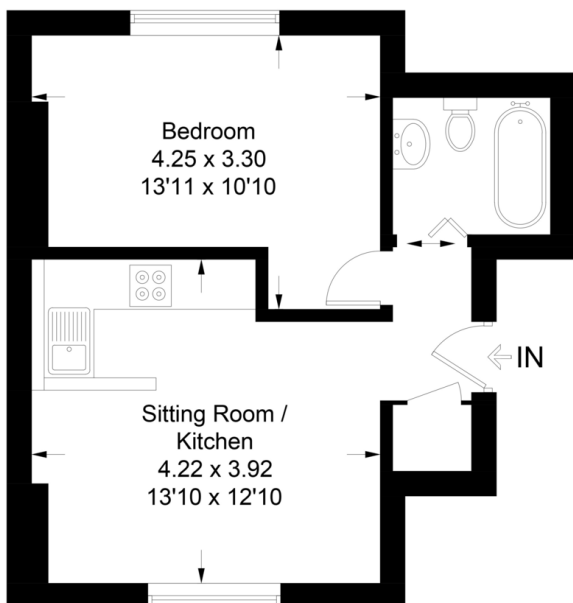
13' 11" x 10' 10" (4.24m x 3.3m)

Buckingham Place, Brighton, BN1 3PJ

Approximate Gross Internal Area = 34.3 sq m / 369 sq ft

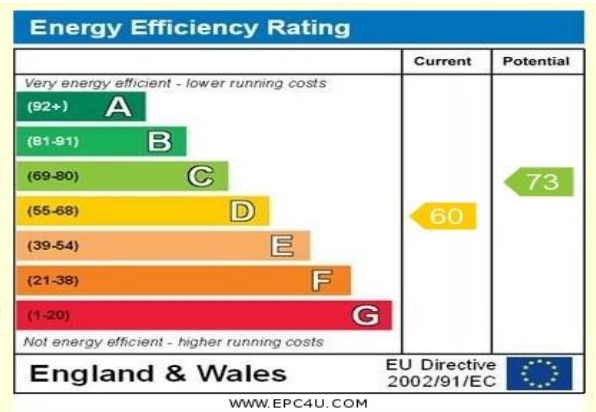


= Reduced headroom below 1.5m / 5'0"



Second Floor

Illustration for identification purposes only, measurements are approximate, not to scale. Imageplansurveys @ 2023



Agents Note: Whilst every care has been taken to prepare these sales particulars, they are for guidance purposes only. All measurements are approximate and for general guidance purposes only and whilst every care has been taken to ensure their accuracy, they should not be relied upon and potential buyers are advised to recheck the measurements

