



98 Railey Road, Crawley

Offers Over £270,000

INSPIRE 



98 Railey Road

Crawley, Crawley

Presenting a unique SPLIT LEVEL 3-bedroom apartment characterized by a unique design, this residence offers an inviting OPEN LIVING SPACE, a balcony for relaxation, a contemporary modern kitchen, and THREE well-appointed bedrooms. The outdoor GARDEN space, coupled with the provision of a parking permit, enhances convenience and functionality. In the desirable Northgate area, this property is close to Crawley centre and the rail station, offering easy access to amenities and serving as a great option for commuters.

Council Tax band: B

Tenure: Leasehold

- 3 bedroom Split Level Apartment
- Own Private Rear Garden!
- Balcony!
- Open plan living / Dining room!
- Kitchen!
- Bathroom with separate W.C!
- Brick Built Storage Shed!
- Great Location near to Town Centre!





Hallway

Living Room

Kitchen

Landing

Bathroom

Separate W.C

Bedroom 1

Bedroom 2

Bedroom 3

Attic / Loft Space



GARDEN

BALCONY

PERMIT

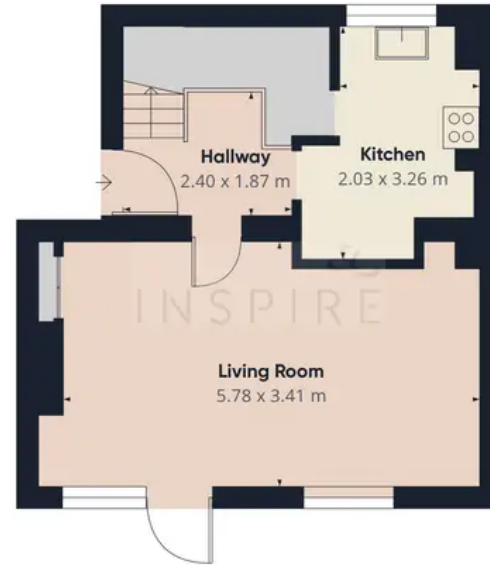
1 Parking Space

Permit Parking

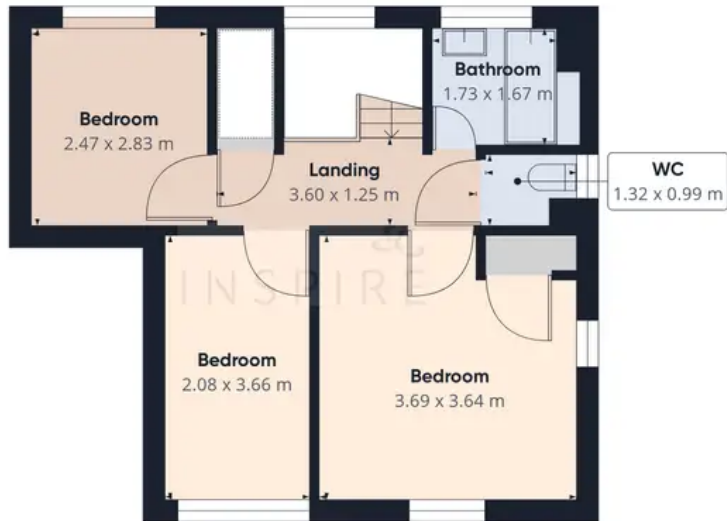




Floor 0 Building 1



Floor 1 Building 1



Floor 2 Building 1



Floor 0 Building 2

Approximate total area⁽¹⁾
77.27 m²

(1) Excluding balconies and terraces

While every attempt has been made to ensure accuracy, all measurements are approximate, not to scale. This floor plan is for illustrative purposes only.

GIRAFFE360



Inspire

13 Tilgate Parade, Crawley - RH10 5EQ

01293 582335

info@inspireestates.co.uk

<http://www.inspireestates.co.uk>

