



3 Heather Walk, Hazlemere

£415,000



Robertsons

3 Heather Walk

Hazlemere, High Wycombe

A beautifully presented terraced home in a quiet walkway position in this ever popular village location. Entrance hall, Cloakroom, Sitting room, Refitted kitchen/Breakfast room, Three bedrooms, Bathroom, Gas central heating, Double glazing, Garage and parking, Gardens. Viewing recommended.

Council Tax band: D

Tenure: Freehold

Entrance hall

Wooden flooring, radiator, stairs to first floor, down lighters

Cloakroom

Low level W.C., wash hand basin with mixer tap and tiled splash back, down lighters, window to front

Sitting room

Radiator, TV point, window to front

Kitchen/Breakfast room

Refitted with a range of eye and base level units incorporating sink unit with mixer tap and drainer, built in Indesit oven, built in microwave, fitted four ring hob with extractor over, built in fridge/freezer, built in Indesit dishwasher, built in Hotpoint washing machine, part tiled walls, built in wine cooler, down lighters, fitted breakfast bar, space for table, radiator, under stairs cupboard with fuses and meters, window to rear, double doors to garden





First floor

Landing

Access to loft space, built in shelved storage cupboard, down lighters

Bedroom 1

With two built in double wardrobes, recess with space for dressing table, radiator, window to front

Bedroom 2

Built in wardrobe, radiator, window to rear

Bedroom 3

Built in double wardrobe, radiator, window to front

Bathroom

Refitted white suite comprising panelled bath with Aqualisa shower over, low level W.C., wash hand basin with mixer tap and cupboards under, heated towel rail, tiled walls, tiled flooring, down lighters, window to rear

Front garden

A lawned front garden

Rear garden

An area of decking leads to the remainder of garden which is laid to lawn with flower and shrub borders. The garden enjoys a sunny south easterly aspect and extends to 24'.

Parking

There is an allocated parking space next to the garage

Garage

With metal up and over door, light and power, door to garden

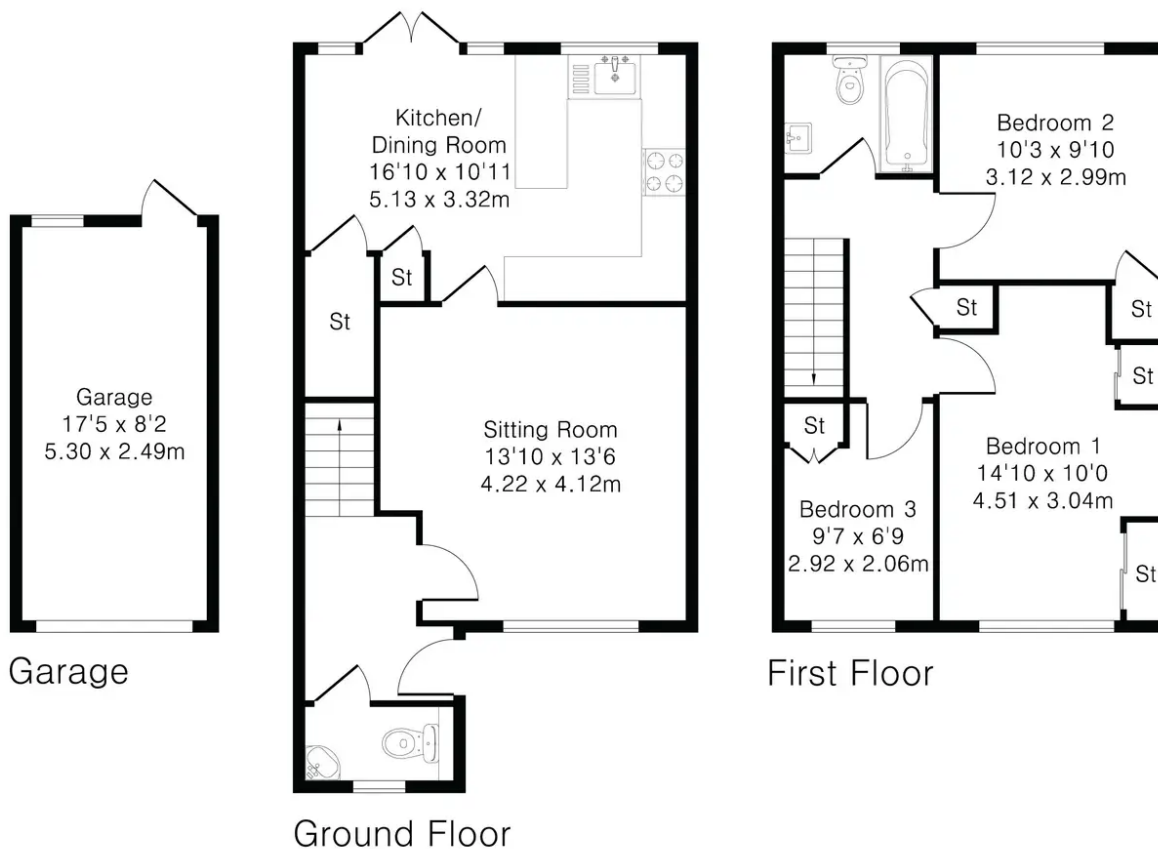


Approximate Gross Internal Area 1030 sq ft – 95 sq m

Ground Floor Area 467 sq ft – 43 sq m

First Floor Area 421 sq ft – 39 sq m

Garage Area 142 sq ft – 13 sq m



Robertsons