



**LAWRENCE RAND**

**41 Coombe Drive, Ruislip**  
**£625,000**



## 41 Coombe Drive

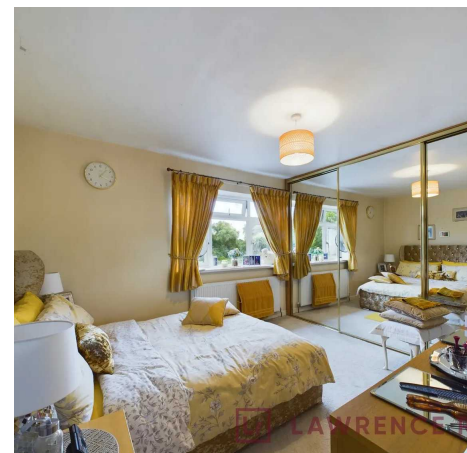
Ruislip, Ruislip

A well-proportioned three double bedroom semi-detached family home being offered for sale with no onward chain. The property offers scope to extend to the rear & into the loft (stp) and is well located being close to the shops and stations at Eastcote and Ruislip Manor.

Council Tax band: E

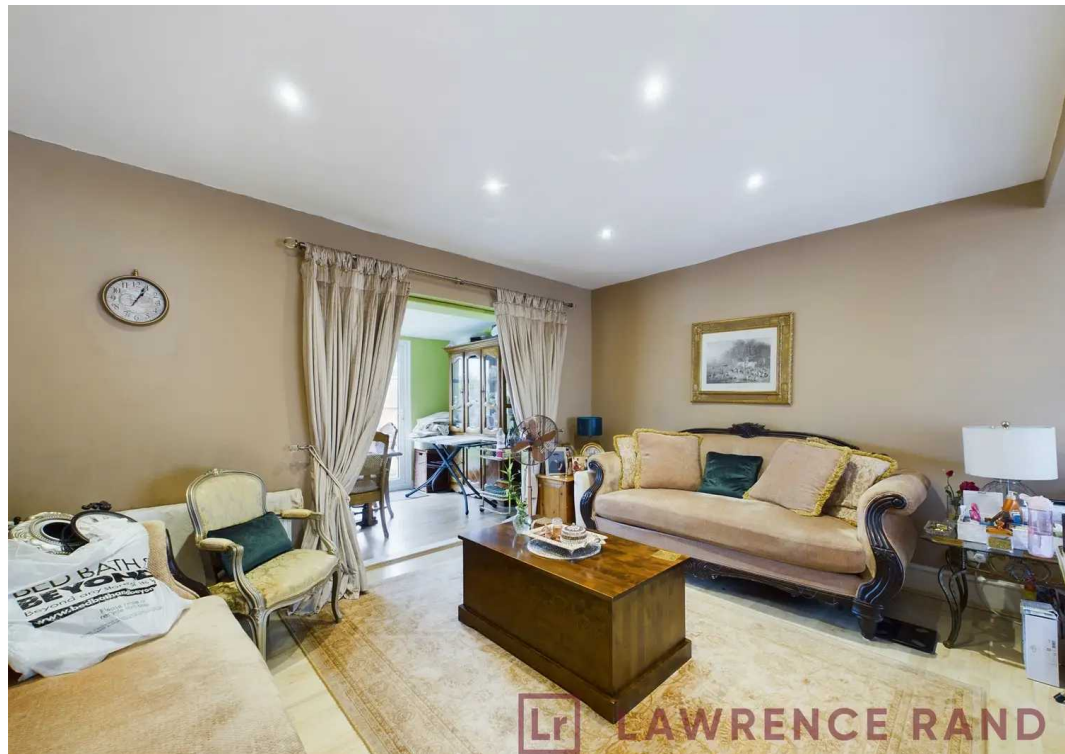
Tenure: Freehold

- Semi Detached House
- Three Double Bedrooms
- Generous Garden
- Scope to Extend (stpp)
- Off Street Parking
- Great Transport Links
- Close to Local Schools & Parks
- No upper chain





Lr LAWRENCE RAND



Lr LAWRENCE RAND



Lr LAWRENCE RAND



Lr LAWRENCE RAND



Ground Floor

Approximate total area<sup>(1)</sup>

1032.71 ft<sup>2</sup>

95.94 m<sup>2</sup>



Floor 1

(1) Excluding balconies and terraces.

While every attempt has been made to ensure accuracy, all measurements are approximate, not to scale. This floor plan is for illustrative purposes only.

GIRAFFE 360



## Lawrence Rand

Lawrence Rand, 106 Victoria Road - HA4 0AL

01895 632211

[Info@lawrence-rand.co.uk](mailto:Info@lawrence-rand.co.uk)

[www.lawrence-rand.co.uk/](http://www.lawrence-rand.co.uk/)



**LAWRENCE RAND**