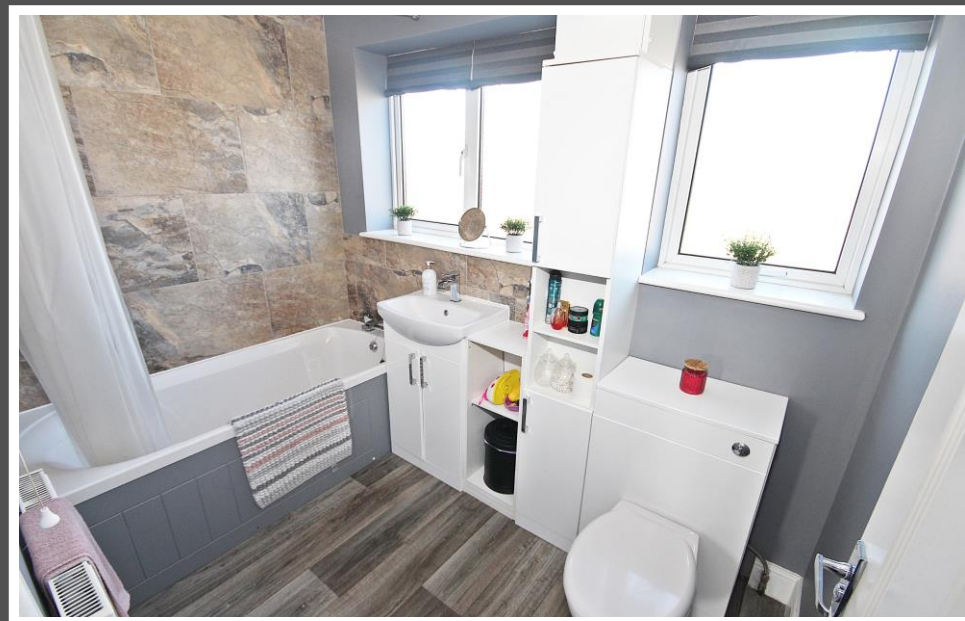


Love Homes



Spensley Road, Westoning, Bedfordshire, MK45 5LQ

This three bedroom family home is located in a popular residential area and one of just a select few with a south facing garden that back on to open fields and enjoy views over open countryside. Outside the southerly facing rear garden backs on to fields and benefits from a sheltered paved patio seating area, timber garden sheds, an outbuilding "Man Cave" with power points, fenced boundaries and gated rear access. The property is ideally positioned just yards from open countryside and just a short walk to the village High Street and Westoning Lower School.



This property is presented by Duncan Stead - a Love Homes property expert with over 25 years' experience.

Find out more about this property by scanning the QR code.



2.1m

Tenure: Freehold



3



1

Council Tax: C

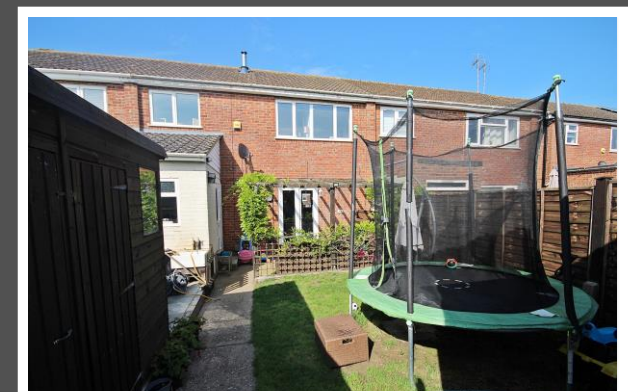
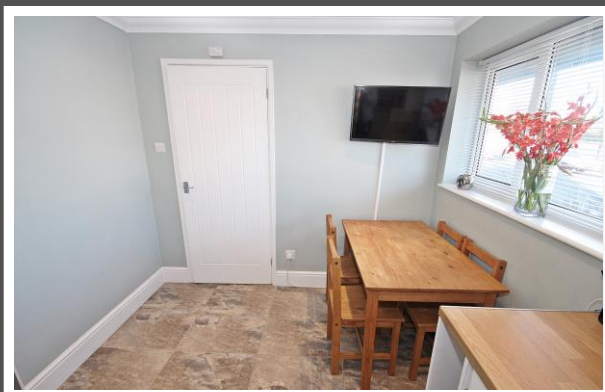


1

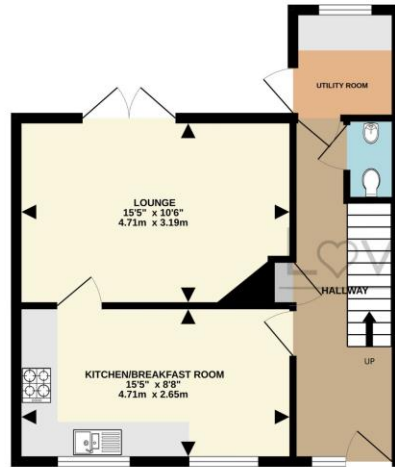




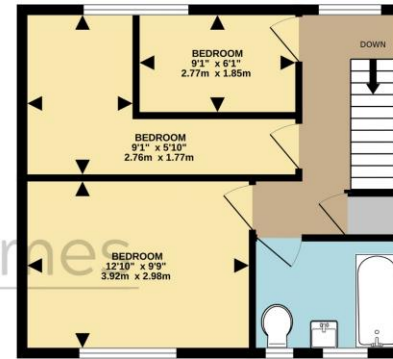
"Spensley Road has been our home for over 20 years. The family have loved living in the village and we've really enjoyed have such a sunny garden that backs onto fields. We've updated the property as the family have grown up, adding a downstairs cloakroom, improving the kitchen and bathroom and most recently adding a man cave in the garden - a handy retreat to get some peace and quiet. Having such easy access to open countryside, the village shops, schools and Junction 12 of the M1 is perfect and probably a reason why Westoning is such a popular village."



GROUND FLOOR  
439 sq.ft. (40.8 sq.m.) approx.



1ST FLOOR  
407 sq.ft. (37.8 sq.m.) approx.



TOTAL FLOOR AREA: 846 sq.ft. (78.6 sq.m.) approx.  
Drawn by Love Homes for illustrative purposes only. Measurements and areas shown are approximate.  
Made with Metroplan ©2023

Score	Energy rating	Current	Potential
92+	A		
81-91	B		85 B
69-80	C	70 C	
55-68	D		
39-54	E		
21-38	F		
1-20	G		



These particulars are set out as a general outline in accordance with the Property Misdescriptions Act (1991) only for the guidance of intending purchasers or lessees, and do not constitute any part of an offer or contract. Details are given without any responsibility, and any intending purchasers, lessees or third parties should not rely on them as statements or representations of fact but must satisfy themselves by inspection or otherwise as to the correctness of each of them. We have not carried out a structural survey and the services, appliances and specific fittings have not been tested. All photographs, measurements, floor plans and distances referred to are given as a guide only and should not be relied upon for the purchase of carpets or any other fixtures or fittings. Gardens, roof terraces, balconies and communal gardens as well as tenure and lease details cannot have their accuracy guaranteed for intending purchasers. Lease details, service ground rent (where applicable) are given as a guide only and should be checked and confirmed by your solicitor prior to exchange of contracts. No person in the employment of Love Homes has any authority to make any representation or warranty whatever in relation to this property. Purchase prices, rents or other prices quoted are correct at the date of publication and, unless otherwise stated, are exclusive of VAT. We retain the copyright in all advertising material used to market this Property. All information is as advised by the seller and subject to change. Council tax bands can be subject to change by the local council.

5 The Russell Centre, Coniston Road, Flitwick, MK45 1QY  
Tel: 01525 713111

Email: [flitwick@lovehomes.uk](mailto:flitwick@lovehomes.uk)

[www.lovehomes.uk](http://www.lovehomes.uk)



**Love Homes**