

Mirfield Grove, HULL

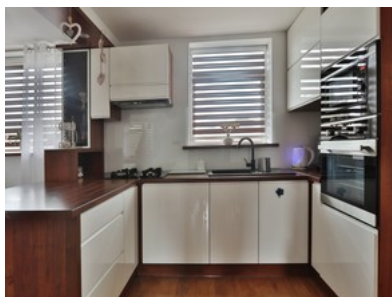
£130,000 - £140,000



beercocks
valuing people, not just houses



- ✓ Open Plan Living Dining Kitchen
- ✓ Utility And Ground Floor Wc
- ✓ Two Bedrooms Plus Loft Area (not To Regs)
- ✓ Rear Garden With Patio Area
- ✓ Convenient Location Close To Amenities
- ✓ Freehold
- ✓ Council Tax Band A
- ✓ Epc Rating D



Bedroom  2 Bathroom  1 Reception  1

Guide Price

£130,000