



Spacious Second & Third Floor Maisonette in the Heart of Belsize Park

Belsize Avenue, Belsize Park, NW3

Available Immediately - £725 per week (£3,141.67 PCM)

* Fees May Apply

Belsize Avenue, Belsize Park, NW3

£725 per week

(£3,141.67 pcm)

- Reception room with dining area
- Fully fitted kitchen
- Study
- Bedroom with en suite bathroom
- Two further double bedrooms
- Family bathroom
- Utility room

A fabulous opportunity to rent this 3 bedroom upper maisonette, set over the second and third floor of a handsome Victorian semi-detached house, located within easy reach of all the eateries and boutiques of both Belsize Park and Belsize Village. Currently arranged with the reception room, kitchen, utility room and study to the third (top) floor, with bedrooms and bathrooms to the second floor. Belsize Park underground (Northern Line) is just a 6 minutes walk and Swiss Cottage underground (Jubilee Line) is 13 minutes walk.

- Available Immediately - **Unfurnished**
- Camden Council Tax Band: F £2,588.35 PA
- EPC Rating: 62/D
- Approx Gross Internal Area: 1,195 sq ft



Belsize Avenue, Belsize Park, NW3

Available Immediately - £725 per week (£3,141.67 PCM)

* Fees May Apply



Spacious Second & Third Floor Maisonette in the Heart of Belsize Park

Belsize Avenue, Belsize Park, NW3

Available Immediately - £725 per week (£3,141.67 PCM)

* Fees May Apply



Spacious Second & Third Floor Maisonette in the Heart of Belsize Park

Belsize Avenue, Belsize Park, NW3

Available Immediately - £725 per week (£3,141.67 PCM)

* Fees May Apply



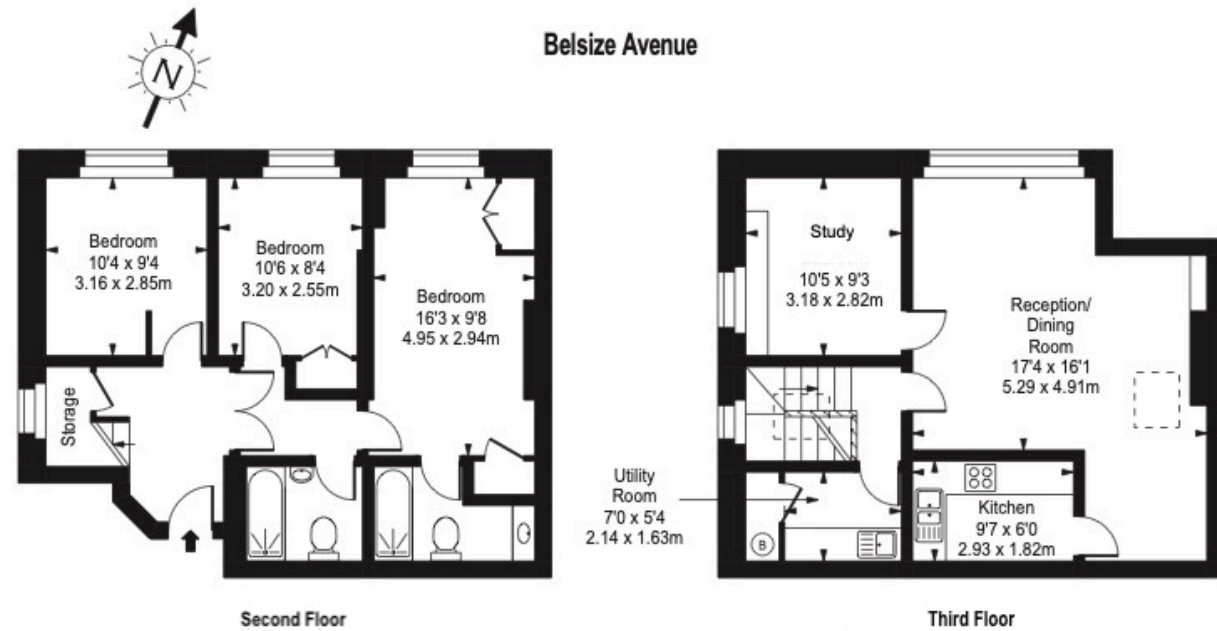
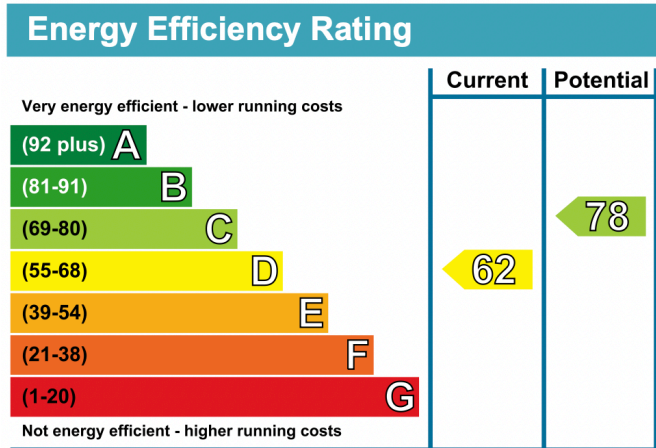
Spacious Second & Third Floor Maisonette in the Heart of Belsize Park

Belsize Avenue, Belsize Park, NW3

Available Immediately - £725 per week (£3,141.67 PCM)

* Fees May Apply

Approx Gross Internal Area: **1,195 Sq Ft / 111.02 Sq M**



Approx Gross Internal Area **1195 Sq Ft - 111.02 Sq M**

For Illustration Purposes Only - Not To Scale
Floor plan by www.bestangle.co.uk

* A holding deposit of 1 weeks rent will be offset against the initial rental payment. The necessary paperwork should be completed within 15 days or such longer period as might be agreed. A security deposit equivalent to 5 weeks rent to be held during the tenancy against unpaid rent, bills, dilapidations and any other costs or losses incurred. Contract variations £50, Change of sharer £50, all inclusive of VAT at the prevailing rate.

For Illustration Purposes Only – Not To Scale