





55 Greenmeadow Way

Rhoose, Barry

4 bed family home with spacious living areas, south facing garden, and no chain. Welcoming central hall, living room, study, kitchen dining room with French doors to garden. Upstairs: 4 bedrooms, 1 en-suite, family bathroom. Drive for 2-3 cars, detached garage. Close to amenities and rail station.

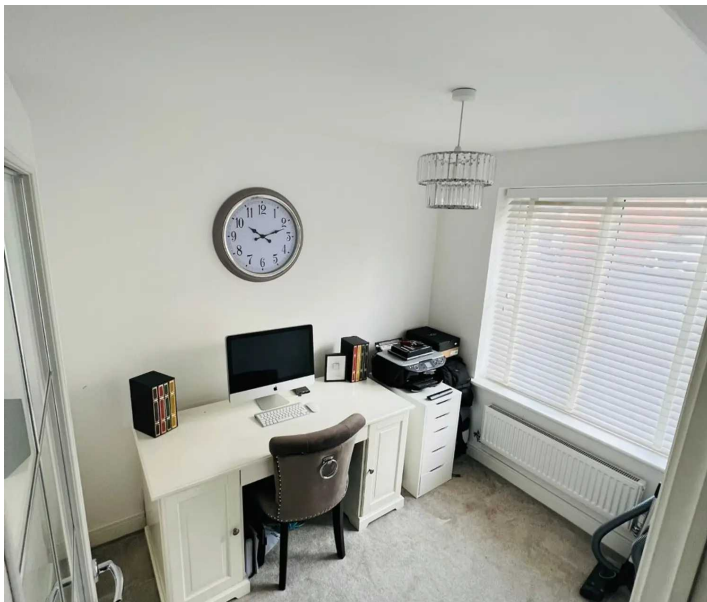
Council Tax band: F

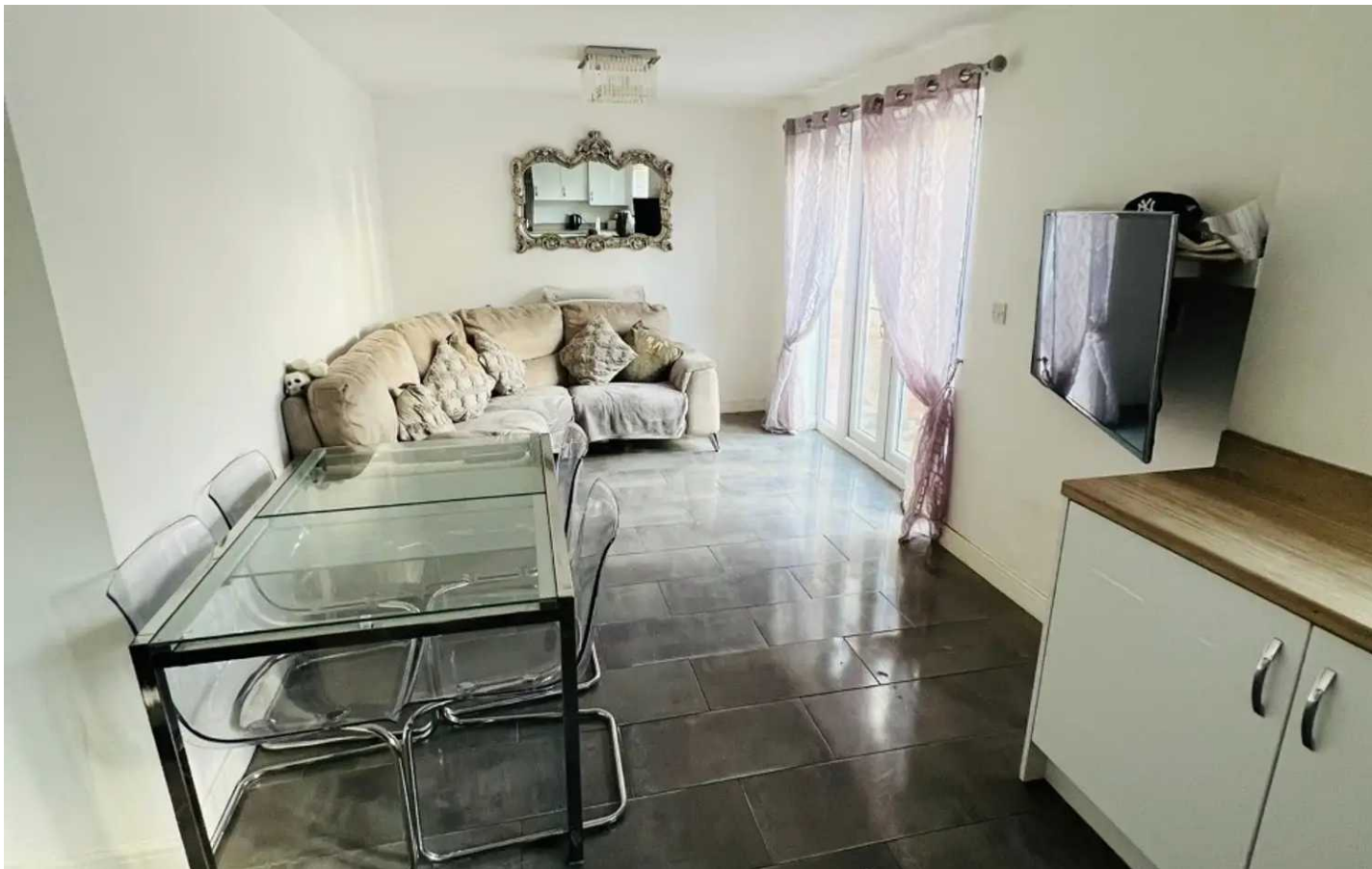
Tenure: Freehold

EPC Energy Efficiency Rating: B

EPC Environmental Impact Rating: B

- 4 DOUBLE BEDROOM DETACHED
- LARGER THAN AVERAGE SUNNY GARDEN
- 2 RECEPTIONS & LARGE KITCHEN
- UTILITY/WC, EN-SUITE & BATHROOM
- NO CHAIN COULD BE AVAILABLE
- DETACHED SINGLE GARAGE
- EPC B86





Entrance Hall

Accessed via a composite front door with opaque glazing. A ceramic tiled floor extends through much of the ground floor and a carpeted staircase leads to the first floor. Upgraded glazed doors lead to the living room, study and kitchen plus a panelled column door leads to the utility/WC. Handy under stair cupboard plus open under stair storage. Radiator.

Living Room

17' 7" x 12' 7" (5.36m x 3.83m)

Larger dimensions into bay. A super size carpeted reception with front bay window and 2 radiators.

Study

8' 6" x 6' 11" (2.59m x 2.11m)

Carpeted and with front window plus radiator.

Utility/WC

6' 9" x 5' 5" (2.06m x 1.65m)

With a ceramic tiled flooring, this room has a WC, handy storage cupboards, worktop space, a sink and space for a washing machine. Extractor and radiator.

Kitchen/Dining Room

26' 4" x 10' 7" (8.02m x 3.22m)

A superb social kitchen with white high gloss units complemented by modern worktops with matching trim and ceramic tiled splash-backs. 1.5 bowl sink unit inset. Integrated appliances include a 4 ring gas hob with extractor over; adjacent double oven and grill, dishwasher and space for fridge/freezer. Concealed boiler firing the gas central heating. Window and French doors to the southerly rear garden. Two radiators and a continuation of the ceramic tiled flooring leads to the dining space. Smooth ceiling with spotlights.

Landing

Carpeted and with matching panelled doors to the 4 double bedrooms, bathroom and airing cupboard. Loft hatch. Radiator.





Bedroom One

13' 9" x 12' 7" (4.19m x 3.83m)

Larger dimension into bay. A carpeted main bedroom with front bay window, radiator, two fitted wardrobes and door to the en-suite.

En-Suite

6' 4" x 5' 3" (1.93m x 1.60m)

Dimensions: 6' 4" x 5' 3" (1.93m x 1.60m). In white and comprising a WC, basin and double shower cubicle with thermostatic shower. Opaque front window, extractor, chrome radiator, ceramic tiled flooring and walls to dado level. Smooth ceiling with 4 spotlights.

Bedroom Two

13' 9" x 10' 1" (4.19m x 3.07m)

A carpeted double bedroom with front window, radiator and fitted double wardrobe.

Bedroom Three

10' 4" x 8' 10" (3.15m x 2.69m)

A carpeted double bedroom with recessed fitted wardrobe excluded from dimensions, radiator and rear window with a sea glimpse.

Bedroom Four

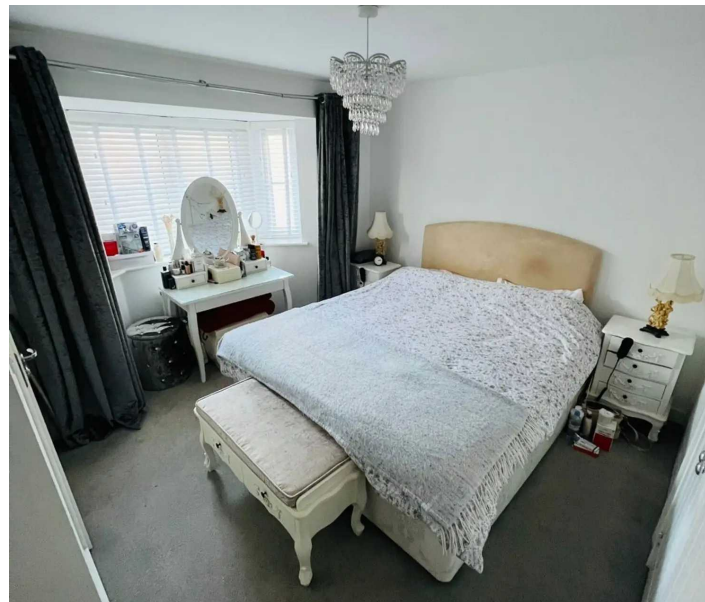
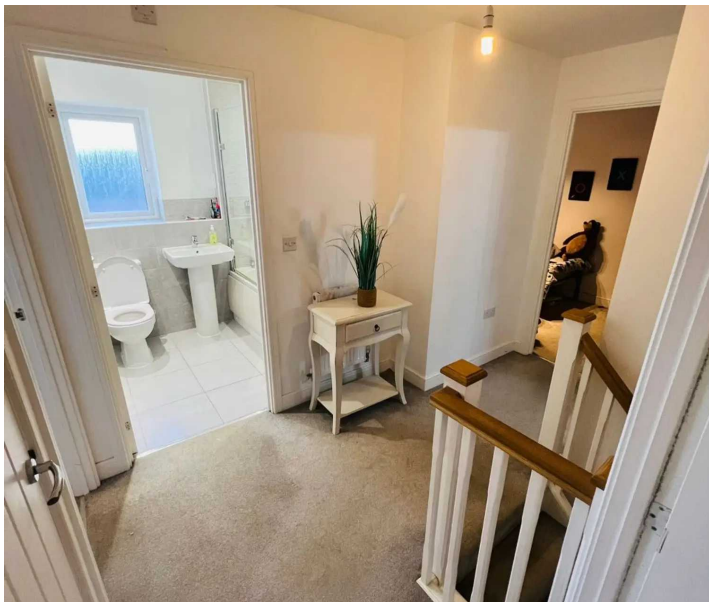
11' 2" x 10' 4" (3.40m x 3.15m)

A carpeted double bedroom with radiator and rear window with a sea glimpse,

Family Bathroom/WC

6' 9" x 5' 6" (2.06m x 1.68m)

With a white suite including WC, basin and bath with glazed screen and shower over. Ceramic tiled splash-backs bath to ceiling. Opaque rear window, radiator. Ceramic tiled flooring. Smooth ceiling with 4 spotlights and extractor.





FRONT GARDEN

A small generally planted frontage with central front access point.

REAR GARDEN

A sunny mainly lawned rear garden enclosed by timber fencing.

DRIVEWAY

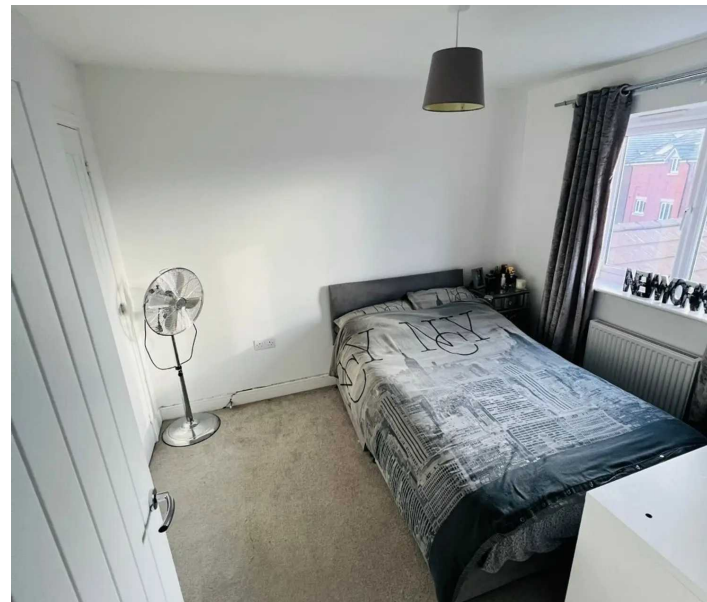
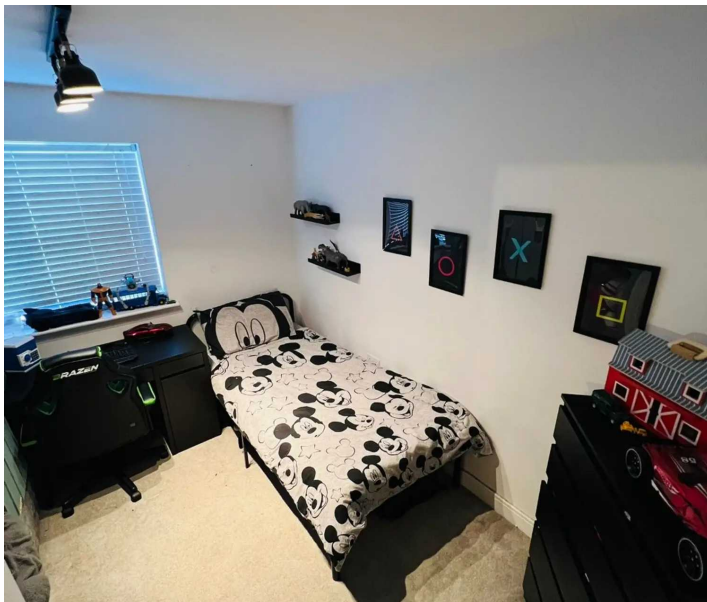
2 Parking Spaces

To the side and for two vehicles. Leading to the garage.

GARAGE

Single Garage

With power and lighting provided; accessed via up and over door.



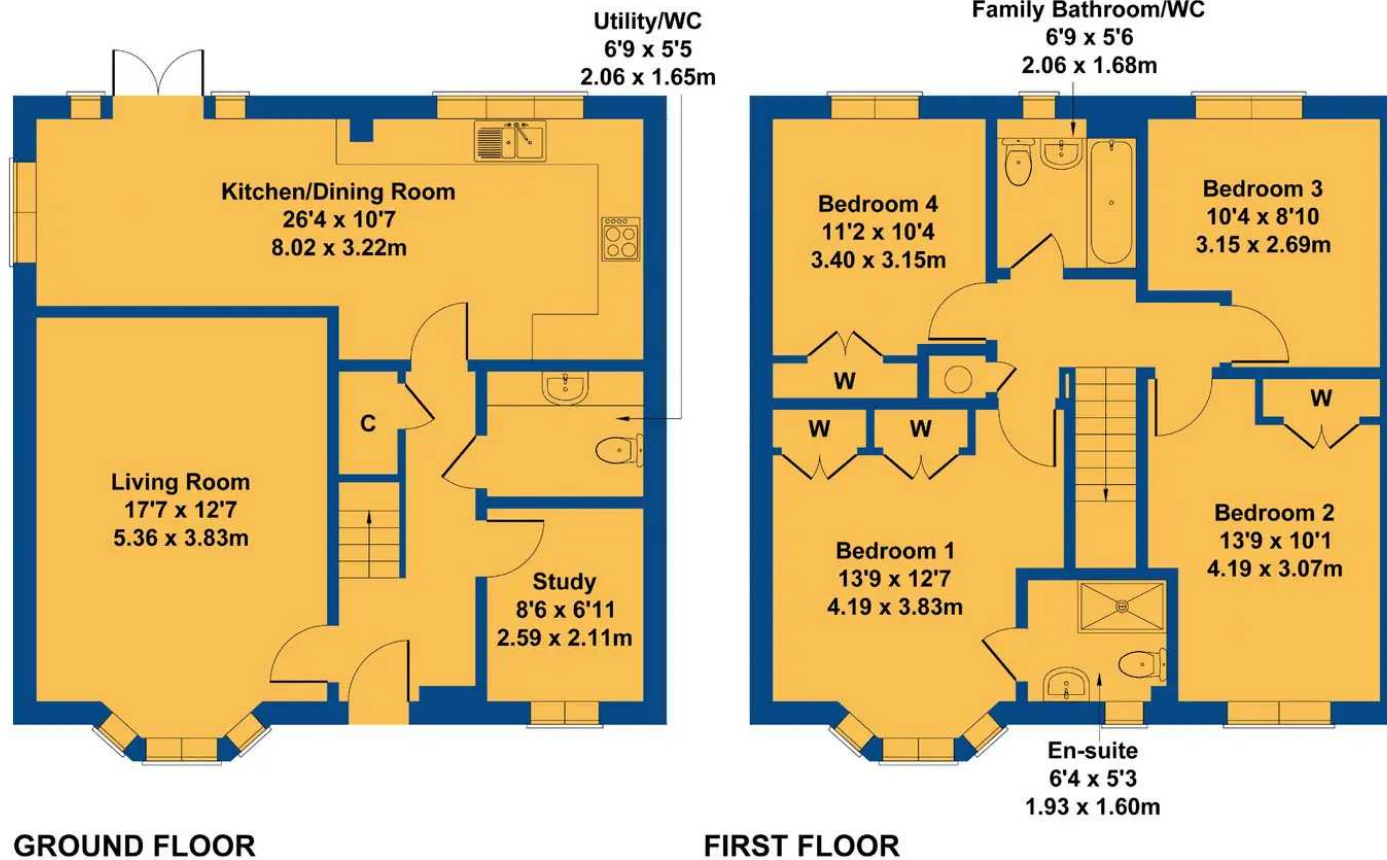


Energy Efficiency Rating		Current	Potential
Very energy efficient - lower running costs			
(92+)	A		95
(81-91)	B	86	
(69-80)	C		
(55-68)	D		
(39-54)	E		
(21-38)	F		
(1-20)	G		
Not energy efficient - higher running costs			
England, Scotland & Wales		EU Directive 2002/91/EC	

Environmental Impact (CO ₂) Rating		Current	Potential
Very environmentally friendly - lower CO ₂ emissions			
(92+)	A		96
(81-91)	B	87	
(69-80)	C		
(55-68)	D		
(39-54)	E		
(21-38)	F		
(1-20)	G		
Not environmentally friendly - higher CO ₂ emissions			
England, Scotland & Wales		EU Directive 2002/91/EC	

55 Greenmeadow Way

Approximate Gross Internal Area
1335 sq ft - 124 sq m



Not to Scale. Produced by The Plan Portal 2023
For Illustrative Purposes Only.



Chris Davies Estate Agents

Chris Davies Estate Agents, 29 Fontygary Road - CF62 3DS

01446 711900

rhouse@chris-davies.co.uk

www.chris-davies.co.uk/

HELPFUL INFORMATION - whilst we try to ensure our sales particulars are complete, accurate and reliable, if there is any point which is particularly important, please ask and we will be happy to check it, including specific information in respect of commuting links, surroundings, noise, views, or condition. For security purposes, applicants who wish to view will need to provide their name, address and telephone number. All measurements are approximate to the widest and longest points. Buyers are advised to instruct a solicitor to obtain verification of tenure and a surveyor to check that appliances, installations and services are in satisfactory condition.