

29 Gadlys Road West, Barry
£250,000



29 Gadlys Road West

Barry, Barry

THREE BEDROOMS; LARGE SOUTHERLY GARDEN;
DRIVE - This well presented family home is
located near the West End of Barry and benefits
from Channel view...
Council Tax band: C

Tenure: Freehold

EPC Energy Efficiency Rating: D

EPC Environmental Impact Rating:

- CHANNEL VIEWS
- KITCHEN B/FAST ROOM
- WELL PRESENTED FAMILY HOME
- BATHROOM WITH SHOWER OVER
- THREE DOUBLE BEDROOMS
- DRIVE; LARGE GARDENS
- EPC D66





Entrance Hall

Accessed via partial glazed uPVC front door. Tiled floor and carpeted stairs to the first floor. Radiator. Under stair recess. Doors to kitchen and lounge. Storage cupboard (with window).

Kitchen

Dimensions: 13' 6" x 11' 4" (4.11m x 3.45m). A range of matching eye level and base units (including glazed cabinets) with complementing work surfaces over and one and a half bowl inset sink unit. Inset gas hob, electric oven under and cooker hood over. Space and plumbing for further appliances. Space for table and chairs. Radiator. Side and rear aspect windows plus uPVC door to rear garden.

Lounge

Dimensions: 17' 0" x 10' 0" (5.18m x 3.05m). Well presented lounge with front and rear aspect windows. Large fire place with inset fire. Radiator. Laminate floor.

Landing

Carpeted and with side aspect window. Doors to three bedrooms and bathroom.

Bathroom

Dimensions: 6' 3" x 6' 3" (1.90m x 1.90m). Panelled bath with electric shower over, low level WC and matching wash hand basin. Partial tiled walls. Radiator. Laminate floor. Opaque front aspect window.

Bedroom One

Dimensions: 13' 6" x 8' 9" (4.11m x 2.66m). Carpeted double bedroom with rear aspect window allowing Channel views. Radiator.

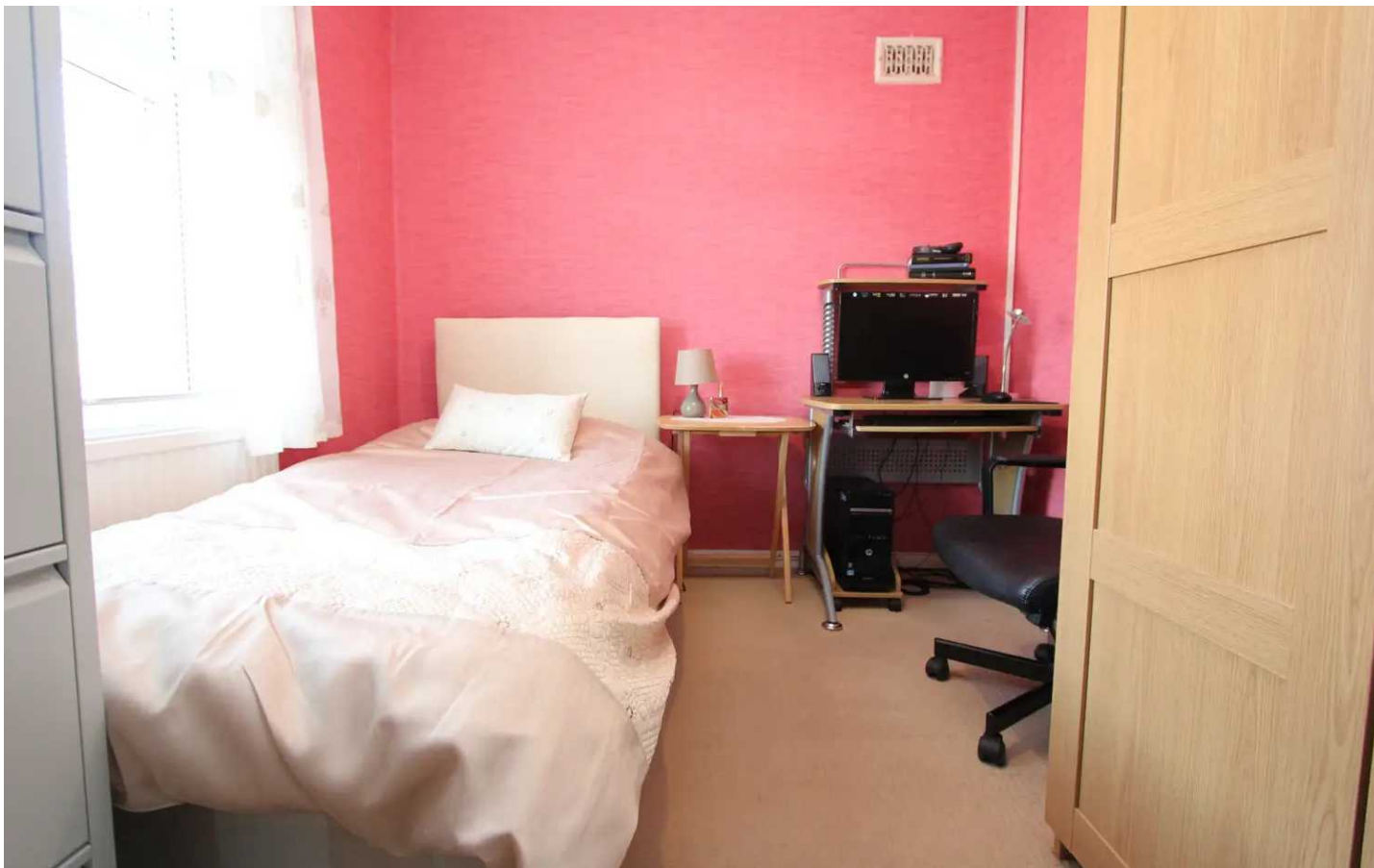
Bedroom Two

Dimensions: 11' 1" x 10' 10" (3.38m x 3.30m). Carpeted double bedroom with rear aspect window allowing Channel views. Wall mounted boiler. Radiator. Fitted cupboard.

Bedroom Three

Dimensions: 10' 6" x 8' 6" (3.20m x 2.59m). Carpeted double bedroom with front aspect window. Radiator.





Bedroom Three

Dimensions: 10' 6" x 8' 6" (3.20m x 2.59m). Carpeted double bedroom with front aspect window. Radiator.





FRONT GARDEN

A deep front mainly laid to lawn with driveway parking for one vehicle, via secure gates. Gate to side / rear.

REAR GARDEN

54' 12" x 30' 0" (16.76m x 9.14m)

A large rear garden of a Southerly aspect mainly laid to lawn with pathway and gate to side / front. Water tap. Large outhouse. Channel views. Established trees.

OFF STREET

2 Parking Spaces



29 Gadlys Road West

Approximate Gross Internal Area
829 sq ft - 77 sq m



GROUND FLOOR



FIRST FLOOR

Bathroom
6'3 x 6'3
1.90 x 1.90m

Not to Scale. Produced by The Plan Portal 2023
For Illustrative Purposes Only.



Chris Davies Estate Agents

Chris Davies Estate Agents, 24 High Street - CF62 7EA

01446 700007

barry@chris-davies.co.uk

www.chris-davies.co.uk/

HELPFUL INFORMATION - whilst we try to ensure our sales particulars are complete, accurate and reliable, if there is any point which is particularly important, please ask and we will be happy to check it, including specific information in respect of commuting links, surroundings, noise, views, or condition. For security purposes, applicants who wish to view will need to provide their name, address and telephone number. All measurements are approximate to the widest and longest points. Buyers are advised to instruct a solicitor to obtain verification of tenure and a surveyor to check that appliances, installations and services are in satisfactory condition.