





15 Fryatt Street

Barry, Barry

PROJECT PROPERTY; TOWN CENTRE; THREE BEDROOMS - This traditional terrace is within walking distance to the town centre, rail station, shops and a sh...

Council Tax band: B

Tenure: Freehold

EPC Energy Efficiency Rating: D

EPC Environmental Impact Rating: D

- THREE BEDROOMS
- SOUTHERLY GARDEN
- TOWN CENTRE LOCATION
- NO CHAIN
- GF BATHROOM
- PROJECT PROPERTY
- EPC D67





Entrance Porch

Accessed via composite front door. Quarry tile style flooring and fully tiled walls. High level fuse box. Partial glazed door to hall.

Hallway

Radiator. Exposed window stairs to first floor. Open to lounge diner.

Lounge Diner

Front and rear aspect windows. Two radiators. Sliding door to kitchen.

Kitchen

A range of fitted units with inset sink unit and space / plumbing for appliances. Vinyl floor. Sliding door to rear lobby.

Utility

Space and plumbing for appliances and units. Door to rear garden.

Rear Lobby

Storage recess and door to bathroom. Glazed door to utility area.

Bathroom

Bath with electric shower over, wash hand basin and low level WC. Radiator. Two windows to rear.

Landing

Exposed wood floors and loft hatch. Doors to three bedrooms.

Bedroom One

Double bedroom with two front aspect windows. Radiator. Fitted wardrobes. Exposed wood floor.

Bedroom Two

Double bedroom with rear aspect window. Radiator. Exposed wood floors. Wall mounted boiler - housed in storage cupboard.

Bedroom Three

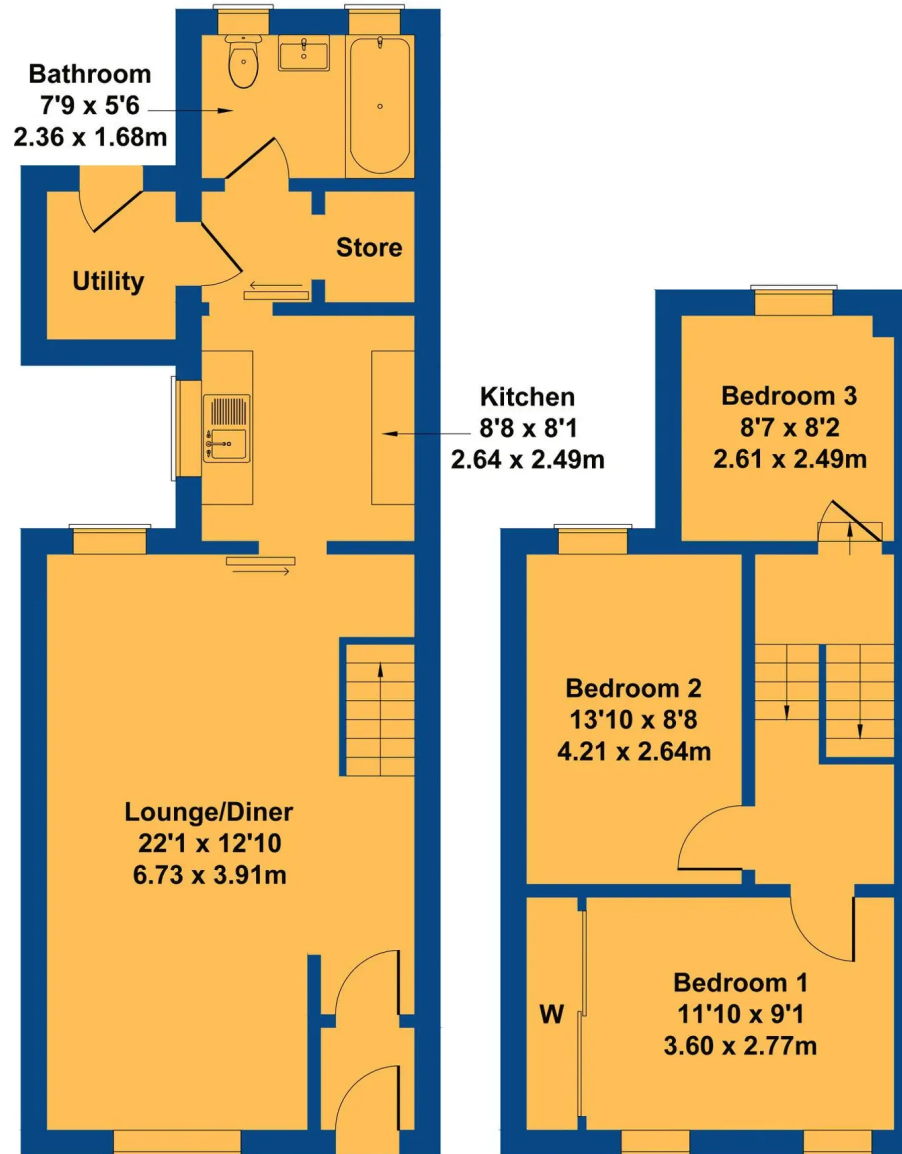
Single bedroom with rear aspect window. Radiator.





15 Fryatt Street

Approximate Gross Internal Area
893 sq ft - 83 sq m



GROUND FLOOR

FIRST FLOOR

Not to Scale. Produced by The Plan Portal 2023
For Illustrative Purposes Only.



Chris Davies Estate Agents

Chris Davies Estate Agents, 24 High Street - CF62 7EA

01446 700007

barry@chris-davies.co.uk

www.chris-davies.co.uk/

HELPFUL INFORMATION - whilst we try to ensure our sales particulars are complete, accurate and reliable, if there is any point which is particularly important, please ask and we will be happy to check it, including specific information in respect of commuting links, surroundings, noise, views, or condition. For security purposes, applicants who wish to view will need to provide their name, address and telephone number. All measurements are approximate to the widest and longest points. Buyers are advised to instruct a solicitor to obtain verification of tenure and a surveyor to check that appliances, installations and services are in satisfactory condition.