

3 Voss Park Close, Llantwit Major
£279,950



3 Voss Park Close

Llantwit Major, Llantwit Major

A rare opportunity to acquire a SEMI-DETACHED FAMILY HOME on Voss Park Close with a 90' rear garden, a sought after location in Llantwit Major, within...

- SEMI DETACHED HOME.
- 3 BEDROOMS. CLOAKROOM/WC.
- 90' REAR GARDEN. UPVC. GCH.
- IN NEED OF MODERNISING.
- POTENTIAL TO EXTEND.
- SUPERB FAMILY LIVING SPACE.





GROUND FLOOR

Entrance Hallway

Solid wood block flooring. Stairs to first floor. UPVC front entrance door. Radiator. Under stairs cupboard. Doors to kitchen and sitting/dining room.

Cloakroom/WC

Dimensions: 2' 8" x 6' 6" (0.81m x 1.98m). Low level WC. UPVC Opaque window to front. Wash hand basin.

Kitchen

Dimensions: 10' 2" x 10' 3" (3.10m x 3.12m). UPVC window to rear. Fitted kitchen comprising eye level units base units with work surfaces over. Inset stainless steel sink with mixer tap. White goods and gas cooker. UPVC opaque glazed door to rear. Ceramic floor tiles. Floor standing gas boiler providing the central heating.

Sitting/Dining Room

Dimensions: 10' 5" x 24' 6" (3.17m x 7.46m). UPVC windows to front and rear. Radiators. Solid wood block flooring. Fireplace.

FIRST FLOOR

Landing

UPVC window to front. Loft access. Doors to bedrooms and family bathroom.

Bedroom 1

Dimensions: 14' 1" x 10' 6" (4.29m x 3.20m). UPVC window to rear. Radiator.

Bedroom 2

Dimensions: 10' 9" x 11' 8" (3.27m x 3.55m). UPVC window to front. Radiator.

Bedroom 3

Dimensions: 10' 4" x 10' 3" (3.15m x 3.12m). UPVC window to rear. Radiator. Airing cupboard.

Family Bathroom

Dimensions: 5' 7" x 7' 1" (1.70m x 2.16m). UPVC opaque window to side. Low level WC. Pedestal wash hand





GROUND FLOOR

Entrance Hallway

Solid wood block flooring. Stairs to first floor. UPVC front entrance door. Radiator. Under stairs cupboard. Doors to kitchen and sitting/dining room.

Cloakroom/WC

Dimensions: 2' 8" x 6' 6" (0.81m x 1.98m). Low level WC. UPVC Opaque window to front. Wash hand basin.

Kitchen

Dimensions: 10' 2" x 10' 3" (3.10m x 3.12m). UPVC window to rear. Fitted kitchen comprising eye level units base units with work surfaces over. Inset stainless steel sink with mixer tap. White goods and gas cooker. UPVC opaque glazed door to rear. Ceramic floor tiles. Floor standing gas boiler providing the central heating.

Sitting/Dining Room

Dimensions: 10' 5" x 24' 6" (3.17m x 7.46m). UPVC windows to front and rear. Radiators. Solid wood block flooring. Fireplace.

FIRST FLOOR

Landing

UPVC window to front. Loft access. Doors to bedrooms and family bathroom.

Bedroom 1

Dimensions: 14' 1" x 10' 6" (4.29m x 3.20m). UPVC window to rear. Radiator.

Bedroom 2

Dimensions: 10' 9" x 11' 8" (3.27m x 3.55m). UPVC window to front. Radiator.

Bedroom 3

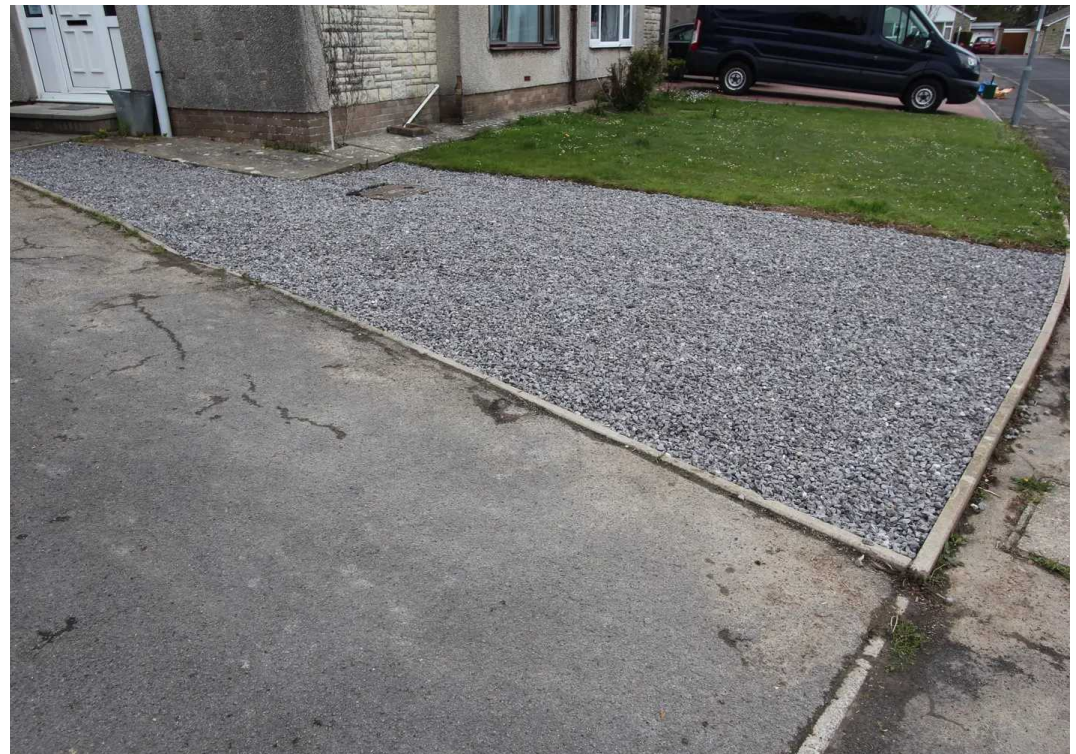
Dimensions: 10' 4" x 10' 3" (3.15m x 3.12m). UPVC window to rear. Radiator. Airing cupboard.

Family Bathroom

Dimensions: 5' 7" x 7' 1" (1.70m x 2.16m). UPVC opaque window to side. Low level WC. Pedestal wash hand







3 Voss Park Close

Approximate Gross Internal Area
1087 sq ft - 101 sq m



Cloakroom/WC
6'6 x 2'8
1.98 x 0.81m

GROUND FLOOR



Family Bathroom
7'1 x 5'7
2.16 x 1.70m

FIRST FLOOR

Not to Scale. Produced by The Plan Portal 2023
For Illustrative Purposes Only.



Chris Davies Estate Agents

Chris Davies Estate Agent, Heritage House East Street - CF61 1XY

01446 792020 • llantwitmajor@chris-davies.co.uk • www.chris-davies.co.uk/

HELPFUL INFORMATION whilst we try to ensure our sales particulars are complete, accurate and reliable, if there is any point which is particularly important, please ask and we will be happy to check it, including specific information in respect of commuting links, surroundings, noise, views, or condition. For security purposes, applicants who wish to view will need to provide their name, address and telephone number. All measurements are approximate to the widest and

You can include any text here. The text can be modified upon generating your brochure.

You can include any text here. The text can be modified upon generating your brochure.