



Dockett Eddy, KT16

Property Price: £900,000 Freehold



Dockett Eddy, Chertsey, Surrey

£2,950 pcm

Description

We are pleased to offer this recently redecorated detached 3 bedroom bungalow located on the bankside of the River Thames, with 80ft morning and unrestricted views of the water, both up and down stream.

The property is set in gated grounds with plenty of driveway parking and if required, by separate negotiation, a very large garage with workshop.

This is an ideal family sized home covering approximately 1,673 sq ft, or one with space for work from home office space. There is a large lounge/dining room with direct views across the garden and River beyond, good sized kitchen, three double bedrooms, ensuite, family bathroom and separate shower room.

The property is closest to Chertsey Town with its local shops and trades and large supermarket, together with railway service to London. Shepperton village is the next nearest centre with High Street of shops, supermarkets, restaurants and pubs and also has a train service to London Waterloo.

The property is available immediately and we would urge early viewing as property such as this, in this location, are few and far between.

EPC: TBC

Available: Immediately

Council Tax: Band G

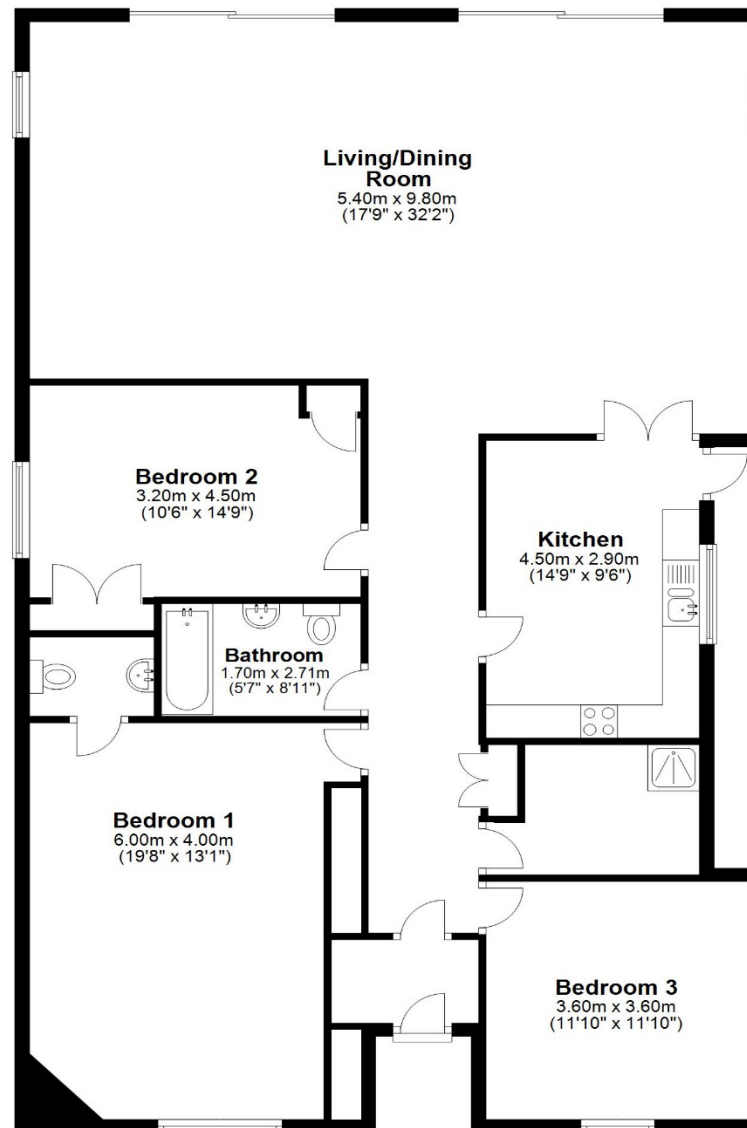
Council: Runnymede Borough Council





Ground Floor

Approx. 155.5 sq. metres (1673.7 sq. feet)



Total area: approx. 155.5 sq. metres (1673.7 sq. feet)

Floor Plan measurements are approximate and are for illustrative purposes only.
Plan produced using PlanUp.

These property particulars are a general guide to a broad description of the property. They are not intended to constitute part of an offer or contract. We have not carried out a structural survey and the services, appliances and specific fittings have not been tested. All photographs, measurements, floorplans and distances referred to are given as a guide only and should not be relied upon. Council tax and estimated utility charges, if shown, are given as a guide only and should be checked and confirmed independently prior to entering into a tenancy arrangement.

