



61 Francklyn Gardens, Edgware, HA8 8RU

Price Guide £750,000

Benjamin Stevens presents this lovely three bedroom detached property on Franklyn Gardens, on the Broadfields Estate, within the Eruv with access to local schools/shopping and the Edgwarebury Park..

To the ground floor the property includes an open plan reception room with a fitted kitchen and cloakroom downstairs and a separate bright dining room which was extended opening the doors to a lovely south west facing garden. The first floor includes three good sized bedrooms with a separate toilet and family bathroom.

This property also includes a utility area alongside a garage with own driveway parking with parking for three cars. This property has huge potential for extending and can extend into the loft (STPP).

To arrange a viewing call us on 0208 958 1118.

Front



Dining Room



Reception Room



Bedroom One



Kitchen



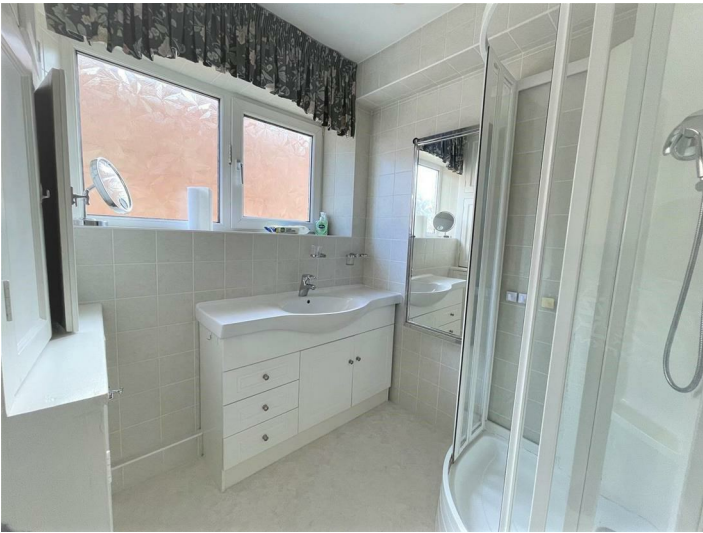
Bedroom Two



Bedroom Three



Family Bathroom

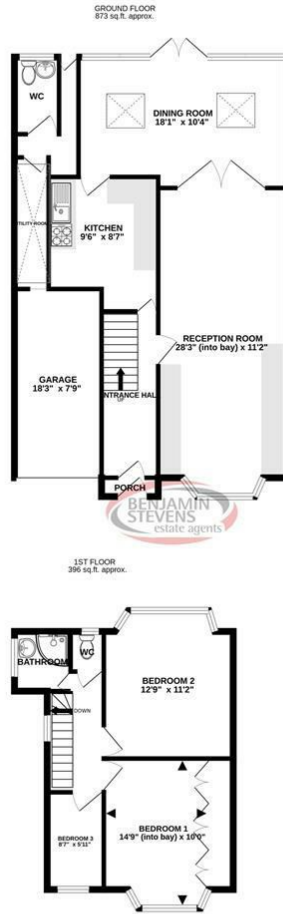


Garden



Back Of House

Floor Plan

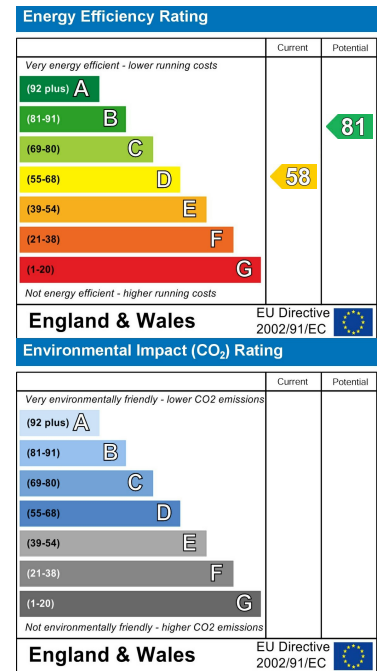


TOTAL FLOOR AREA: 1376sq. ft. approx.
 Whilst every attempt has been made to ensure the accuracy of the floorplan contained here, measurements of doors, windows, rooms and any other items are approximate and no responsibility is taken for any error, omission or mis-statement. This plan is for illustrative purposes only and should be used as such by any prospective purchaser. The services, systems and appliances shown have not been tested and no guarantee as to their operability or efficiency can be given.
 Made with Metropix ©2023

Area Map



Energy Efficiency Graph



These particulars, whilst believed to be accurate are set out as a general outline only for guidance and do not constitute any part of an offer or contract. Intending purchasers should not rely on them as statements of representation of fact, but must satisfy themselves by inspection or otherwise as to their accuracy. No person in this firm's employment has the authority to make or give any representation or warranty in respect of the property.



Edgware Office- 194 Station Road, Edgware, HA8 7AT. Tel: 020 8958 1118
 Bushey Heath Office- 59 High Road, Bushey, WD23 1EE. Tel: 020 8950 7777
www.benjaminstevens.co.uk