



97 Stanley Avenue, Baffins

Portsmouth

Offers in Region of £290,000

 chinneckshaw



97 Stanley Avenue

Baffins, Portsmouth

We are delighted to offer this fantastic three-bedroom mid-terraced property situated in the highly sought-after area of Baffins. Offering spacious accommodation and boasting no forward chain, this property is an excellent opportunity for those looking to put down roots in this ever popular area.

Upon entering the property, you are greeted by a welcoming hallway that leads to the heart of the home. The open plan lounge dining room provides a versatile living space, perfect for entertaining guests or relaxing with the family. Natural light floods the room, creating a bright and airy atmosphere throughout.

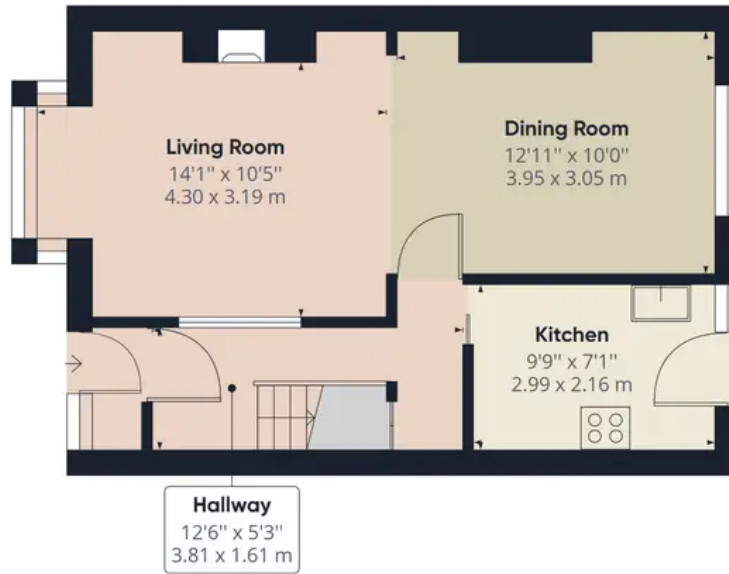
The kitchen, located just off the dining area, offers ample storage and workspace. Its modern design with a range of fitted wall and base cabinets which are a neutral colour scheme providing the perfect canvas for adding your own personal touch.

Making your way to the first floor, you will find three generously sized bedrooms. There are two double rooms with a smaller single size third room. This property truly caters to the needs of growing families or those requiring a home office or hobby room. Completing this floor you'll find the family bathroom. A white suite with panelled bath, basin and WC. Externally, the property benefits from a double garage, ensuring parking or additional storage space and backs on to Great Salterns Marsh with playing fields. This property also offers limitless potential for those with a green thumb, as there is ample opportunity to create a private outdoor oasis.

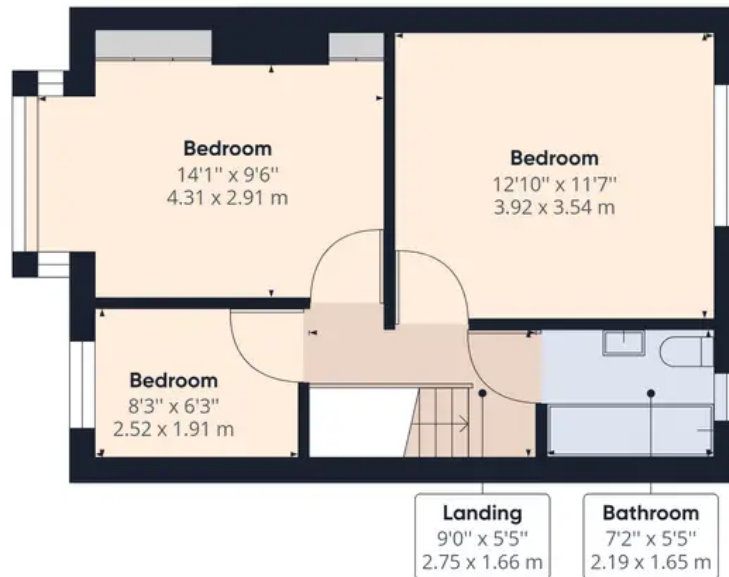
Situated in the ever-popular Baffins area, this property benefits from excellent local amenities, including schools, shops, and transport links. For those seeking a mixture of urban convenience and natural beauty, nearby parks and green spaces provide a tranquil escape from the hustle and bustle of daily life.

In summary, it offers spacious and versatile accommodation, making it the perfect family home or ideal investment opportunity. With no forward chain, this property won't be on the





Ground Floor



Floor 1

Approximate total area⁽¹⁾

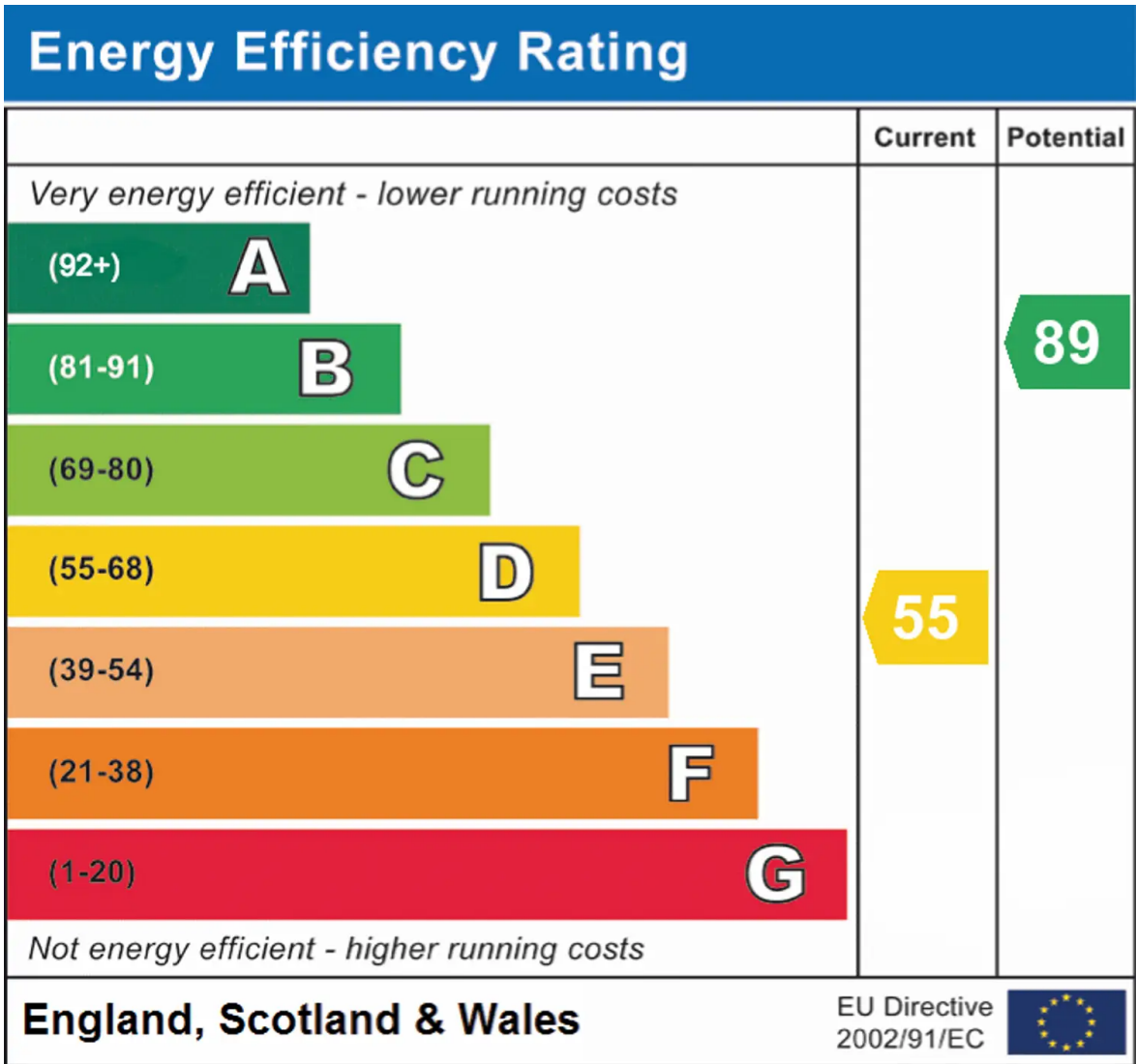
854.40 ft²

79.38 m²

(1) Excluding balconies and terraces

While every attempt has been made to ensure accuracy, all measurements are approximate, not to scale. This floor plan is for illustrative purposes only.

GIRAFFE360



Chinneck Shaw

Bridge House, Milton Road, Portsmouth – PO3 6AN

023 9282 6731

hello@chinneckshaw.co.uk

www.chinneckshaw.co.uk/

Chinneck Shaw, Bridge House, Milton Road, PO3 6AN Consumer Protection from Unfair Trading Regulations 2008: These details are for guidance only and complete accuracy cannot be guaranteed. If there is any point which is of particular importance, verification should be obtained. The do not constitute a contract or part of a contract. All measurements are approximate. No guarantee can be given with regard to planning permissions or fitness for purpose. No apparatus, equipment, fixture or fitting has been tested. Items shown in the photographs are NOT necessarily included. Interested Parties are advised to check availability and make an appointment to view before travelling to see a property.