



46 Rawthey Avenue, Didcot

Didcot

Simpsons
The Proactive Agent

Guide Price **£315,000**



SCAN THE
QR CODE
FOR DETAILS



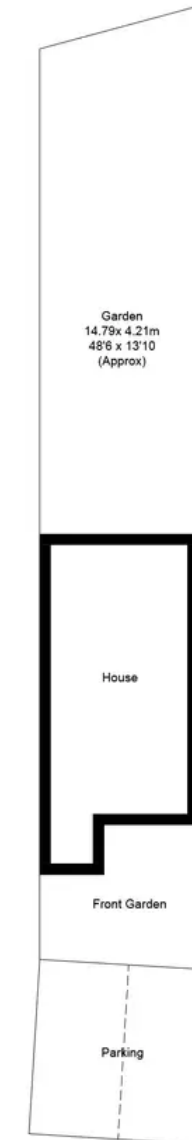
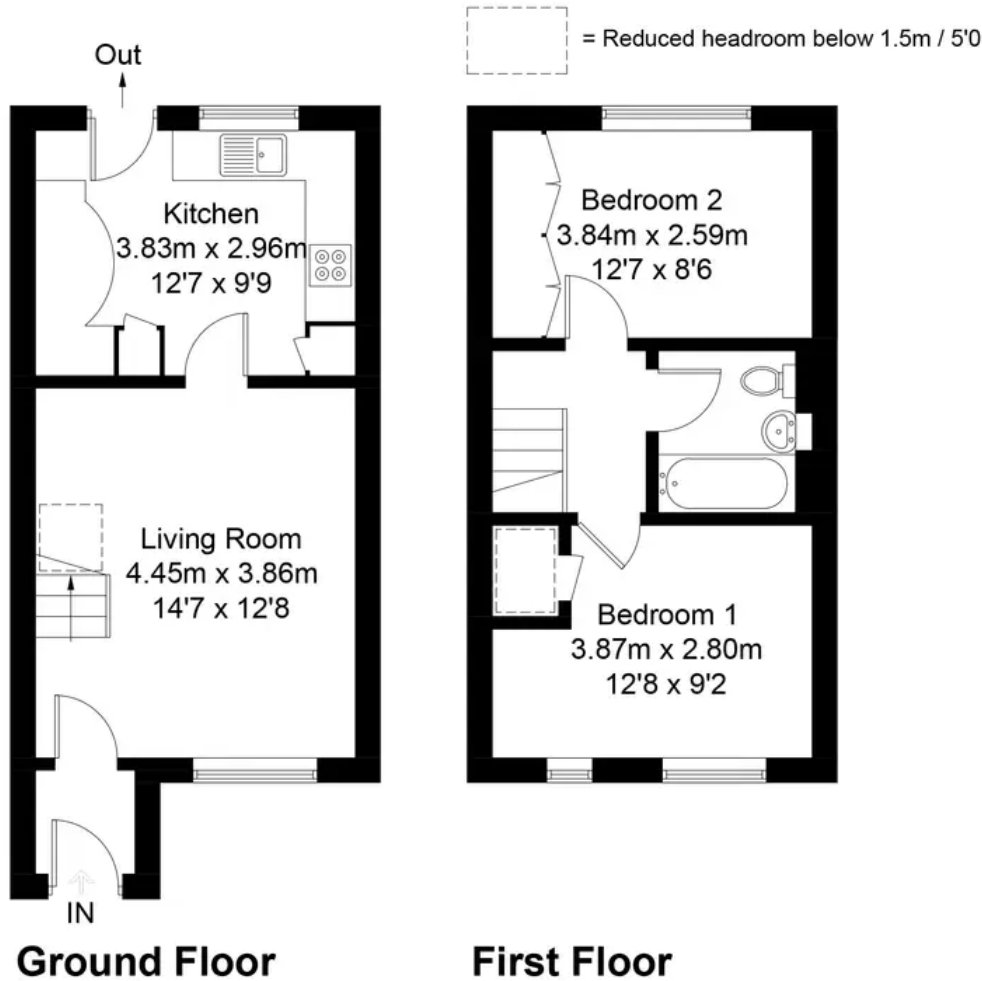


Rawthey Avenue, OX11 7XW

Approximate Gross Internal Area = 60.1 sq m / 647 sq ft

External Area = 102.5 sq m / 1103 sq ft

For identification only - Not to scale



Floor plan produced in accordance with RICS Property Measurement Standards.

© Mortimer Photography. Produced for Simpsons.

Unauthorised reproduction prohibited. (ID1001136)

46 Rawthey Avenue

Didcot, Didcot

A beautifully presented home with two very spacious bedrooms and a large and private rear garden.

Council Tax band: C

Tenure: Freehold

- Off-street parking for two cars
- Beautifully presented accommodation
- Newly fitted kitchen with quartz worktops and breakfast bar
- Fully landscaped garden



SCAN THE
QR CODE
TO BOOK
YOUR VIEWING



