



39 Rosemount Drive, Uphall

Offers Over £124,995



39 Rosemount Drive

Uphall, Broxburn

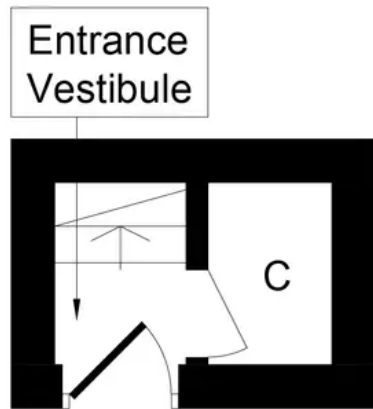
Knightbain welcome to the market this superb Upper Villa situated within a highly desirable cul-de-sac location in Uphall. The property boasts two bedrooms, modern kitchen and an abundance of storage space. Presented in true move in condition with no onward chain.

Council Tax band: B

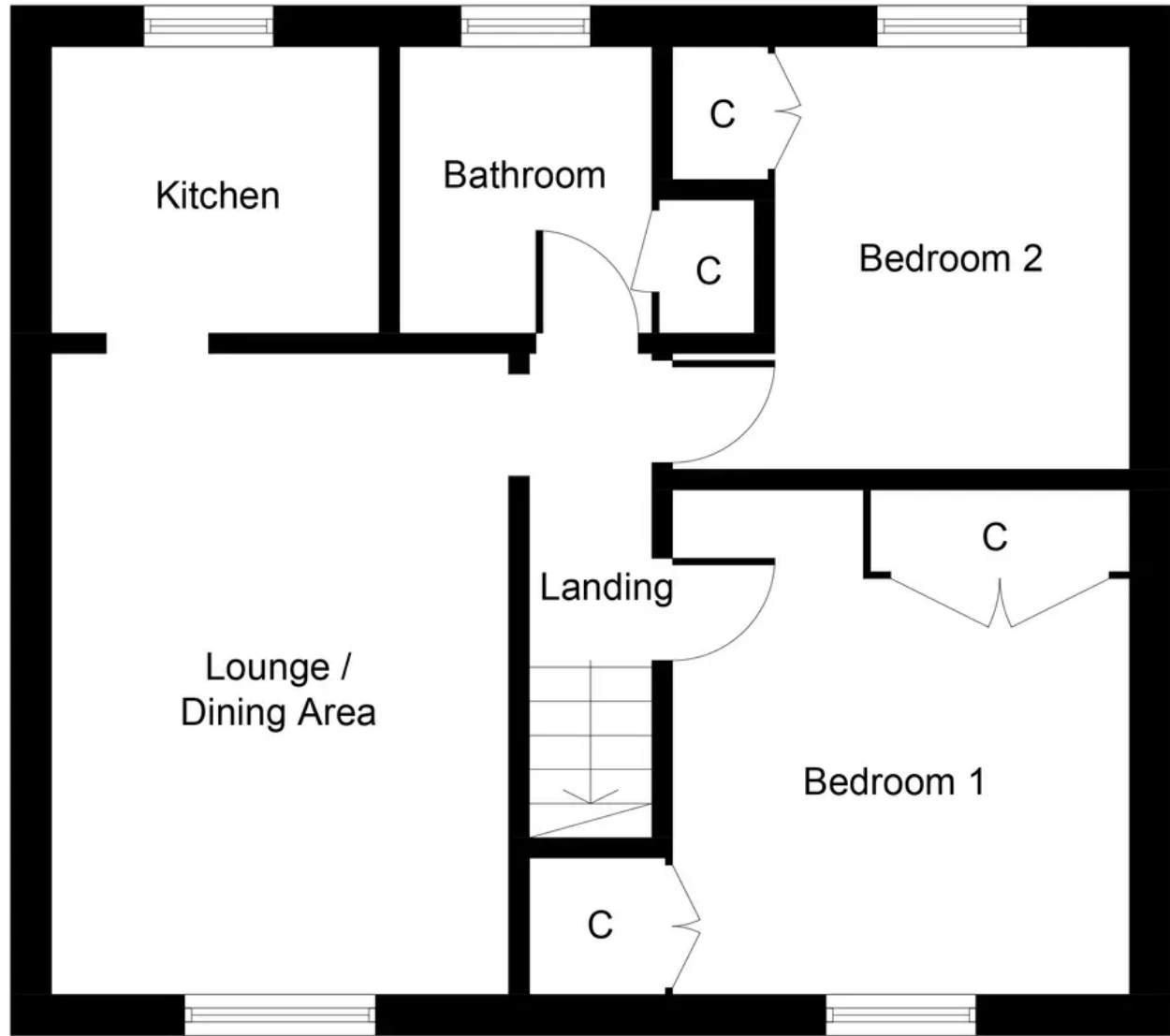
Tenure: Freehold

- EPC = C
- Council Tax Band = B
- Upper Villa
- Sought After Cul-De-Sac Location
- No Onward Chain
- Views Over Green Spaces
- Garage
- Two Bedrooms
- On Street Parking Available Within The Street
- Short Drive To Town Centre And Schooling





Ground Floor
Approximate Floor Area
25 Sq. ft.
(2.34 Sq. m.)



First Floor
Approximate Floor Area
589 Sq. ft.
(54.75 Sq. m.)

Whilst every attempt has been made to ensure the accuracy of the floor plan contained here, measurements of doors, windows, rooms and any other items are approximate and no responsibility is taken for any error, omission, or mis-statement. The measurements should not be relied upon for valuation, transaction and/or funding purposes. This plan is for illustrative purposes only and should be used as such by any prospective purchaser or tenant. The services, systems and appliances shown have not been tested and no guarantee as to their operability or efficiency can be given.



KnightBain Estate Agents

Knightbain, 4 Greendykes Road, Broxburn - EH52 5AG

01506 852000

info@knightbain.co.uk

www.knightbain.co.uk/

