



**LAWRENCE RAND**

**Flat 8, 3 Pembroke Road, Ruislip**

Guide Price **£380,000**



## Flat 8

3 Pembroke Road, Ruislip

An exceptionally well presented contemporary two-bedroom upper-floor apartment tastefully designed to a high specification.

Tenure: Leasehold

- Two double bedrooms
- Open plan living
- Located in the heart of Ruislip



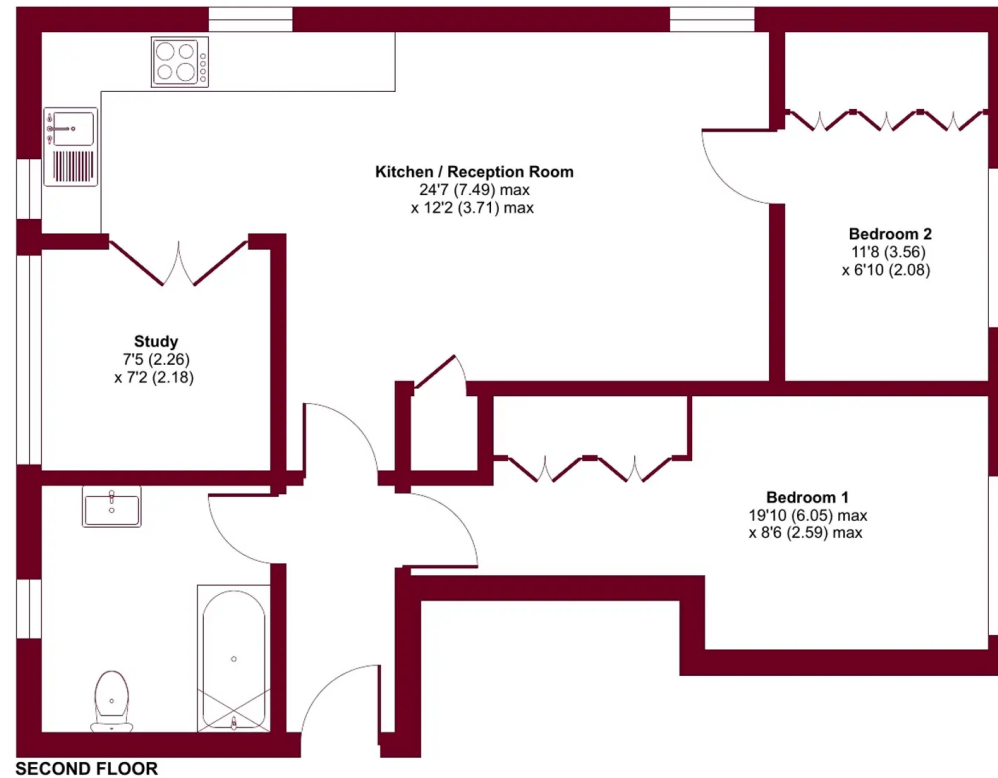




# Pembroke Road, Ruislip, HA4

Approximate Area = 661 sq ft / 61 sq m

For identification only - Not to scale





## Lawrence Rand

Lawrence Rand, 106 Victoria Road - HA4 0AL

01895 632211

[Info@lawrence-rand.co.uk](mailto:Info@lawrence-rand.co.uk)

[www.lawrence-rand.co.uk/](http://www.lawrence-rand.co.uk/)



**LAWRENCE RAND**