



5 Bedroom Town House £290,000

Redhouse Way, Redhouse , Swindon, Wiltshire , SN25 2AU

mcfarlane
property.com

5 Bedroom Town House North Swindon

- FIVE DOUBLE BEDROOMS
- NO ONWARD CHAIN
- IMPRESSIVE FOOTPRINT
- FANTASTIC INVESTMENT OR FAMILY HOME POTENTIAL
- GARAGE & PARKING
- FULLY ENCLOSED REAR GARDEN

***NO ONWARD CHAIN ***This fantastic FIVE BEDROOM property offers flexible living spread over three floors and is an ideal purchase for a growing family or for an incredible opportunity to run as an INVESTMENT OPPORTUNITY due to its current HMO set up and a wealth of internal space. Please note, the property does REQUIRE SOME MODERNIZATION throughout but has INCREDIBLE POTENTIAL. On the ground floor there is an entrance hall, kitchen/breakfast room, reception room and downstairs cloakroom. To the first floor is the IMPRESSIVE LIVING ROOM/BEDROOM and a double bedroom. The second floor provides two further double bedrooms with an en-suite to master and a family bathroom. Externally the property benefits from OFF ROAD PARKING and GARAGE to the rear, along with an enclosed rear garden. Council Tax Band E
Council Tax Estimate £2,686






We where you LIVE

Our team are friendly, experienced and are all local. They know it better than they do their own living rooms and can help you find what you're looking for because **we love where we live.**

We would be delighted to show you around this property.

Because every home needs a personal touch.

If you would like to view this property then please get in touch.

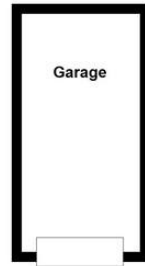
 01793 296600

 swindon@mcfarlaneproperty.com

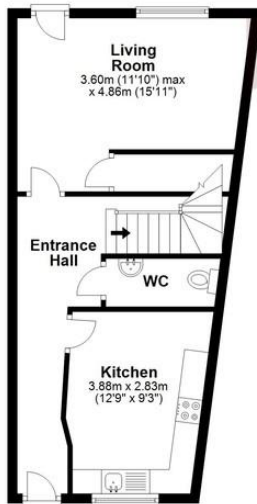
mcfarlaneproperty.com

Agents Note: Whilst every care has been taken to prepare these sales particulars, they are for guidance purposes only. All measurements are approximate are for general guidance purposes only and whilst every care has been taken to ensure their accuracy, they should not be relied upon and potential buyers are advised to recheck the measurements

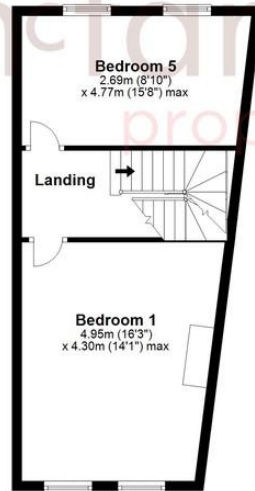
Garage
Approx. 12.2 sq. metres (130.8 sq. feet)



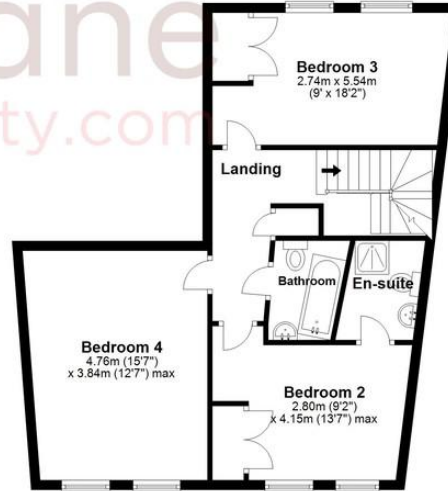
Ground Floor
Approx. 41.6 sq. metres (448.1 sq. feet)



First Floor
Approx. 40.4 sq. metres (434.7 sq. feet)



Second Floor
Approx. 60.5 sq. metres (651.1 sq. feet)



Total area: approx. 154.7 sq. metres (1664.7 sq. feet)

mcfarlane
property.com

Cricklade.
102 High Street
Cricklade SN6 6AA
 01793 751044

Marlborough.
106 High Street
Marlborough SN8 1LT
 01672 514380

Old Town.
28-30 Wood Street
Swindon SN1 4AB
 01793 296880

Swindon.
The Village Centre,
Redhouse SN25 2FW
 01793 296600